



MODERN INDUSTRIAL WORKWEAR

FEEL SAFE.

WORK SMART.

LOOK GOOD.

2022 DIGITAL EDITION



MEN'S
12-41

WINTER WEAR
34-41



INDEX

NON-FR
52-57



WOMEN'S
42-47



ACCESSORIES
48-51



GEAR
55-57



Modern Industrial Workwear

made with innovative materials and modern designs
for the new generation workforce.



FEEL SAFE. WORK SMART. LOOK GOOD.

At LAPCO, we know what it takes to get the job done. That's why we are proud of the work we are doing and the products we produce.

Customer Service

Customer care is what sets LAPCO apart from the competition and makes our products and services the top choice. We are willing to go the extra mile to aid customers before, during, and after purchase.

Customization

We offer embroidery and digitizing, custom reflective taping, patches, emblems, and heat transfers on all of our products. These value-added services are completed before the product leaves headquarters, giving customers a turnkey solution for their workwear needs.

Safety

LAPCO products are certified to meet standards set forth by NFPA 2112, NFPA 70E, and ASTM F1506. Wearer safety is top priority, and all aspects of garment construction are engineered to adhere to standards and best practices. The industries we serve are asset intensive, and we understand the importance of employee protection and product reliability.

Our Brands



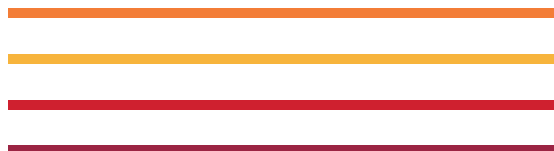
LAPCO Manufacturing, Inc.'s portfolio of brands cater to a variety of preferences and priorities, meeting ever-evolving industry needs and providing a range of products that meet or exceed relevant safety standards.



LAPCO FR™ - MODERN INDUSTRIAL WORKWEAR made with innovative materials and modern designs for the new generation workforce.



LAPCO™ - PREMIUM WORKWEAR SINCE 1989 classic workwear styles, accessories, and gear designed for welders by a welder.



Beginning



OUR HISTORY STARTS IN 1989.

LAPCO is family owned and operated in Morgan City, Louisiana. In 1989, Freddie Triche established Louisiana Apparel Company in the Triche family's backyard workshop. As a pipe welder himself, Freddie saw a need for high-quality protective apparel for welders. Freddie designed, patented, and began producing his leather arm pads with the help of his wife, Trudy. After receiving positive feedback from friends and local customers, Freddie began advertising his arm pads with a mail-in order form in a small welding publication. The demand for Freddie's leather arm pads grew from there and the operation expanded to include high-quality welding shirts, welding leathers, and other accessories after a short time.

LAPCO employees have a rich history and family legacies tied to some of the most dangerous industries in the world. Our families and friends have careers that bring them into hazardous conditions on a day-to-day basis. We are proud of the work that we are doing and the products that we produce. We know that the job we do keeps people all around the world safe from harm so that they can return to their families. That is why quality and integrity are so important to us.

Development



Over the last 3 decades, the industrial trades that use safety apparel have grown and evolved. Standards are in place to keep workers safe from hazards on the job. Workplaces have implemented safety cultures and employees are encouraged to work safely. These developments were the catalyst for the introduction of the LAPCO FR™ line of work clothing in 2005. Today, we produce hundreds of protective products and offer many services with the same high standards for quality and family values that are inherent to the LAPCO brand.



Culture & Community

Special thanks to RPCC's Process Technology Department. The Process Technology (PTEC) program at RPCC is a selective admissions program that prepares individuals to become refinery, chemical, and other industry-related operators. Learn more at:



As we continue to navigate the many unpredictable events and challenges of recent days, we find inspiration in the unique local aspects that have molded our brand since 1989. Recently, our team had the pleasure of collaborating with a local networking group, The Extreme Safety Professionals, onsite at the River Parishes Community College in Sorrento, Louisiana, for our annual photoshoot. The juxtaposition between a serene swamp sky and the gritty industrial backdrop reminds us of our history while talking with actual safety professionals onsite inspires us for the days ahead. At Lapco, we come from an area where culture, community, and industry are inherent to our mission, vision, and values. That is why we are proud to partner with those who help make our great state of Louisiana so unique.

Follow us on social for promotions, news, and updates!



Instagram



Facebook



Twitter



Web

PROTECTION & PERFORMANCE ICONOGRAPHY

Search the **UL Online Certifications** directory for the reference numbers below to see certification documents or scan the QR codes provided.





QGWB.MH49608
(NFPA 2112)



QGVZ.MH49608
(ASTM F1506)



NFPA 70E Arc Flash PPE Categories

CATEGORY		REQUIRED MINIMUM
	CAT 1	4 cal/cm ²
	CAT 2	8 cal/cm ²
	CAT 3	25 cal/cm ²
	CAT 4	40 cal/cm ²



L-SPFR
Ladies FR Polo Shirts
Page 46



Technologies & Features

PROTECTION STANDARDS

UL CLASSIFIED NFPA 2112 PRODUCTS



LAPCO FR products are UL Classified as meeting the requirements of NFPA 2112, Protective Clothing for Protection of Industrial Personnel Against Flash Fire. "Flame-Resistant Clothing for Protection of Industrial Personnel Against Short-duration Thermal Exposures from Fire."

UL CLASSIFIED ASTM F1506 PRODUCTS



Certain LAPCO FR products are UL Classified as meeting the requirements of ASTM F1506, Protective Clothing for Electrical Workers. "Standard Performance Specification for Textile Materials for Wearing Apparel for Use by Electrical Workers Exposed to Momentary Arc and Related Thermal Hazards."

ANSI/ISEA 107-2015 PRODUCTS



LAPCO FR Hi-Viz Shirts (Pages 22 & 23) have been evaluated by third party testing and were found to meet the requirements of ANSI/ISEA 107-2015.

NFPA 70E COMPLIANT PRODUCTS



LAPCO FR products are compliant with NFPA 70E Standard for Electrical Safety in the Workplace.

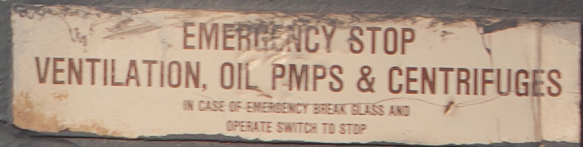
PERFORMANCE FEATURES

	Moisture Wicking quickly moves (wicks) sweat to the fabric's outer surface and dries rapidly keeping you comfortable and allowing your body to regulate its temperature efficiently.		Wind Resistant the outer shell's polyurethane (PU) laminated film works as a wind barrier, preventing wind from penetrating the fabric.
	Comfort Touch Fabric provides one-of-a-kind comfort and lightweight feel with incredible softness only found with long-staple cotton.		Lightweight & Durable the fabric content allows for a more durable garment while maintaining lightweight comfort.
	Water Resistant the outer shell has two barriers against moisture: a DWR finish on the outside and a polyurethane (PU) laminated film inside.		Stretch Fabric the fabric content allows these garments to move and flex with you for comfort, fit, and mobility.
	Anti-Odor anti-odor fabric technology captures and blocks or kills odor-causing bacteria, neutralizing the bacteria before it interacts with sweat reducing the amount of body odor.		Inherent Protection flame-resistance is a built in characteristic of the fabric, the fibers are engineered to be flame-resistant before being woven into fabric, no treatment is needed.



LAPCO
FR





MEN'S FR COVERALLS

Get the job done in LAPCO's FR coveralls. We offer deluxe and economy styles in several fabric options.



FEEL SAFE. WORK SMART. LOOK GOOD.



CAT
2

7oz. FR Deluxe Coveralls

Style#: CVFRD7

Colors: Gray [CVFRD7GY]
Khaki [CVFRD7KH]
Navy [CVFRD7NY]
Orange [CVFRD7OR]
Red [CVFRD7RE]
Royal [CVFRD7RO]
Spruce Green [CVFRD7SG]

Sizes: SM, MED, LG, XL, 2XL,
3XL, 4XL, 5XL, 6XL

Lengths: SHO, REG, TAL, XTA



CAROLINA
PROTECT® FR®

Material: 7oz. 100% Flame-Resistant Cotton Twill with a moisture management finish

Certs: ATPV 8.7 cal/cm², HRC/CAT 2, NFPA 70E Compliant, UL Classified ASTM F1506, UL Classified NFPA 2112



CAT
2

6.5oz. DH FR Deluxe 2.0 Coveralls

Style#: CVDHF6

Colors: Khaki [CVDHF6KH]
Navy [CVDHF6NY]
Red [CVDHF6RE]
Royal [CVDHF6RO]

Sizes: SM, MED, LG, XL, 2XL,
3XL, 4XL, 5XL, 6XL

Lengths: SHO, REG, TAL, XTA



Westex® DH

Material: **Khaki, Red, & Royal** - 6.5oz. Westex® DH Twill - 48% Tencel / 40% Modacrylic / 12% Para-aramid
Navy - 6.5oz. Westex® DH Twill - 47% Tencel / 38% Modacrylic / 15% Para-aramid

Certs: ATPV 8.9 cal/cm², HRC/CAT 2, NFPA 70E Compliant, UL Classified NFPA 2112



7oz. FR Deluxe Coveralls

Style#: GOCD7

Colors: Light Gray [GOCD7LG]
Khaki [GOCD7KH]
Navy [GOCD7NY]

Sizes: 34, 36, 38, 40, 42, 44,
46, 48, 50, 52, 54, 56,
58, 60, 62, 64, 66, 68

Lengths: SHO, REG, TAL, XTA



Material: 7oz. 88% Flame-Resistant Cotton/ 12% Nylon Blend with a moisture management finish

Certs: ATPV 8.9 cal/cm², HRC/CAT 2, NFPA 70E Compliant, UL Classified ASTM F1506, UL Classified NFPA 2112



6oz. FR Deluxe Coveralls

Style#: GOCD6

Colors: Gray [GOCD6GY]
Khaki [GOCD6KH]
Navy [GOCD6NY]

Sizes: 34, 36, 38, 40, 42, 44,
46, 48, 50, 52, 54, 56,
58, 60, 62, 64, 66, 68

Lengths: SHO, REG, TAL, XTA



Material: 6oz. 88% Flame-Resistant Cotton/ 12% Nylon Blend with a moisture management finish

Certs: ATPV 8.8 cal/cm², HRC/CAT 2, NFPA 70E Compliant, UL Classified NFPA 2112, UL Classified ASTM F1506



FEEL SAFE. WORK SMART. LOOK GOOD.



7oz. FR Economy Coveralls

Style#: CVEFR7

Colors: Gray [CVEFR7GY]
Khaki [CVEFR7KH]
Navy [CVEFR7NY]
Royal [CVEFR7RO]

Sizes: SM, MED, LG, XL, 2XL,
3XL, 4XL, 5XL, 6XL

Lengths: REG, TAL



Material: 7oz. 100% Flame-Resistant Cotton Twill with a moisture management finish

Certs: ATPV 8.7 cal/cm², HRC/CAT 2, NFA 70E
Compliant, UL Classified ASTM F1506, UL
Classified NFA 2112



9oz. FR Welding Coveralls

Style#: CVIN9

Colors: Navy [CVIN9NY]

Sizes: SM, MED, LG, XL, 2XL,
3XL, 4XL, 5XL, 6XL

Lengths: SHO, REG, TAL, XTA



Material: 9oz. 100% Flame-Resistant Cotton Twill with a moisture management finish

Certs: ATPV 13.2 cal/cm², HRC/CAT 2, NFA 70E
Compliant, UL Classified ASTM F1506, UL
Classified NFA 2112

Coverall Styles Comparison Chart

FEATURES AVAILABLE	ECONOMY	WELDER/ CONTRACTOR	DELUXE 2.0	DELUXE
Sewn with Nomex® thread	✓	✓	✓	✓
Covered brass zippers with Nomex® tape	✓	✓	✓	✓
Double needle stitching on inseams, out seams, and arms	✓			
Triple needle stitching on the inseam, out seams, and arms		✓	✓	✓
Elastic at back of waist		✓	✓	✓
Glove clip loop at waist				✓
Mic loops at shoulders			✓	
Covered metal snaps at placket		✓	✓	✓
Covered metal snaps at chest pockets			✓	
Covered metal snaps at leg cuff		✓	✓	✓
Covered metal snaps at wrist cuff		✓	✓	✓
Black plastic snaps at wrist cuff	✓			
Black plastic snaps at chest pockets	✓			
Black plastic snaps at placket	✓			
Pencil hole on left chest pocket flap			✓	
Pencil pocket on left arm		✓	✓	✓
Pencil pocket on left chest				✓
Reach through at hip pockets	✓	✓	✓	✓
Right back patch pocket & left back zip close patch pocket			✓	✓
Tally book pocket on the left leg				✓
Two hip pockets	✓	✓	✓	✓
Utility pocket on right leg		✓	✓	✓
Two back patch pockets	✓	✓		
Two zippered chest pockets				✓
Two patch-style chest pockets with snap close pocket flaps			✓	
Two patch-style chest pockets		✓		
Two snap close patch-style chest pockets	✓			





MEN'S FR SHIRTS

LAPCO has flame-resistant shirts to meet your FR workwear needs. Uniform, western, t-shirt, and henley styles available.



FEEL SAFE. WORK SMART. LOOK GOOD.

TYPE R
CLASS 2



Material: 7oz. Flame-Resistant Hi-Viz 50% Modacrylic, 40% Lyocel, 10% Twaron Blend Knit with anti-odor & moisture management

CAT
2



7oz. FR Hi-Viz Henley Tees

Style#: FRT-HJE HV2

Colors: Hi-Viz Yellow-Green
[FRT-HJE HV2]

Sizes: SM, MED, LG, XL, 2XL, 3XL,
4XL, 5XL, 6XL

Lengths: REG, LON



Certs: ATPV 16.4 cal/cm², HRC/CAT 2,
NFA 70E Compliant,
UL Classified NFA 2112,
ANSI/ISEA 107-2015 | TYPE R | Class 2

TYPE R
CLASS 3



Material: 7oz. Flame-Resistant Hi-Viz 50% Modacrylic, 40% Lyocel, 10% Twaron Blend Knit with anti-odor & moisture management

CAT
2



7oz. FR Hi-Viz Henley Tees

Style#: FRT-HJE HV3

Colors: Hi-Viz Yellow-Green
[FRT-HJE HV3]

Sizes: SM, MED, LG, XL, 2XL, 3XL,
4XL, 5XL, 6XL

Lengths: REG, LON



Certs: ATPV 16.4 cal/cm², HRC/CAT 2,
NFA 70E Compliant,
UL Classified NFA 2112,
ANSI/ISEA 107-2015 | TYPE R | Class 3

**TYPE R
CLASS 2**



CAT
2



7oz. FR Hi-Viz Uniform Shirts

Style#: IHV7C2

Colors: Hi-Viz Yellow-Green [IHV7C2]

Sizes: SM, MED, LG, XL, 2XL, 3XL, 4XL, 5XL, 6XL

Lengths: REG, LON



Material: 7oz. Flame-Resistant 100% Cotton with moisture management finish

Certs: ATPV 8.7 cal/cm², HRC/CAT 2, NFA 70E Compliant, ANSI/ISEA 107-2015 | TYPE R | CLASS 2, UL Classified ASTM F1506, UL Classified NFA 2112

**TYPE R
CLASS 3**



CAT
2



7oz. FR Hi-Viz Uniform Shirts

Style#: IHV7C3

Colors: Hi-Viz Yellow-Green [IHV7C3]

Sizes: SM, MED, LG, XL, 2XL, 3XL, 4XL, 5XL, 6XL

Lengths: REG, LON



Material: 7oz. Flame-Resistant 100% Cotton with moisture management finish

Certs: ATPV 8.7 cal/cm², HRC/CAT 2, NFA 70E Compliant, ANSI/ISEA 107-2015 | TYPE R | CLASS 3, UL Classified ASTM F1506, UL Classified NFA 2112



FEEL SAFE. WORK SMART. LOOK GOOD.



CAT
2



6oz. FR Pocket T-Shirts

Style#: FRT-USHLSP6

Colors: Gray [FRT-USHLS6GY]
Khaki [FRT-USHLS6KH]
Navy [FRT-USHLS6NY]

Sizes: SM, MED, LG, XL, 2XL,
3XL, 4XL, 5XL, 6XL

Lengths: REG, LON



Material: 6oz. Flame-Resistant
93% Cotton 7% Spandex Knit
with moisture management

Certs: ATPV 8.1 cal/cm², HRC/CAT 2,
NFPA 70E Compliant,
UL Classified NFPA 2112



CAT
2



7oz. FR Henley Tees

Style#: FRT-HJE

Colors: Gray [FRT-HJE GRY]
Khaki [FRT-HJE KHA]
Medium Blue [FRT-HJE MBL]
Navy [FRT-HJE NAVY]

Sizes: SM, MED, LG, XL, 2XL, 3XL,
4XL, 5XL, 6XL

Lengths: REG, LON



Material: 7oz. Flame-Resistant 100% Cotton Jersey Knit

Certs: ATPV 8.9 cal/cm², HRC/CAT 2,
NFPA 70E Compliant,
UL Classified NFPA 2112



CAT
2

7oz. FR Uniform Shirts

Style#: IXXX7

Colors: Gray [IGR7]
Khaki [IKH7]
Navy [INV7]
Medium Blue [IMB7]
Orange [IORA7]
Red [IRE7]
Royal [IRO7]
Blue White Stripe [IBW7]

Sizes: SM, MED, LG, XL, 2XL,
3XL, 4XL, 5XL, 6XL

Lengths: REG, LON



CAROLINA
PROTECT® **FR®**

Material: 7oz. 100% Flame-Resistant Cotton Twill with a moisture management finish

Certs: ATPV 8.7 cal/cm², HRC/CAT 2, NFA 70E
Compliant, UL Classified ASTM F1506, UL
Classified NFA 2112



CAT
2

7oz. FR Uniform Shirts

Style#: GOSAC7

Colors: Gray [GOSAC7GY]
Khaki [GOSAC7KH]
Medium Blue [GOSAC7MB]
Navy [GOSAC7NY]

Sizes: SM, MED, LG, XL, 2XL,
3XL, 4XL, 5XL, 6XL

Lengths: REG, LON



Westex
UltraSoft AC®

Material: 7oz. Advanced Comfort 88% Long Staple Cotton/
12% Nylon Blend Twill with an UltraSoft finish

Certs: ATPV 8.3 cal/cm², HRC/CAT 2, NFA 70E
Compliant, UL Classified ASTM F1506, UL
Classified NFA 2112



FEEL SAFE. WORK SMART. LOOK GOOD.



CAT
2



MIC LOOPS

5.5oz. DH Air FR Uniform Shirts

Style#:	DHS5
Colors:	Gray [DHS5GY] Khaki [DHS5KH] Medium Blue [DHS5MB] Navy [DHS5NY]
Sizes:	SM, MED, LG, XL, 2XL, 3XL, 4XL, 5XL, 6XL
Lengths:	REG, LON

WESTEX
DH Air™

Material: 5.5oz. Westex® DH Air™
47% Lenzing Lyocell / 38% Modacrylic /
15% Aramid

Certs: ATPV 9.1 cal/cm², HRC/CAT 2, NFPA 70E
Compliant



CAT
2



MIC LOOPS

6.5oz. DH FR Uniform Shirts

Style#:	DHS6
Colors:	Khaki [DHS6KH] Navy [DHS6NY] Red [DHS6RE] Royal [DHS6RO]
Sizes:	SM, MED, LG, XL, 2XL, 3XL, 4XL, 5XL, 6XL
Lengths:	REG, LON

WESTEX
DH

Material: **Khaki, Red, & Royal** - 6.5oz. Westex® DH Twill -
48% Tencel / 40% Modacrylic / 12% Para-aramid
Navy - 6.5oz. Westex® DH Twill -
47% Tencel / 38% Modacrylic / 15% Para-aramid

Certs: ATPV 8.9 cal/cm², HRC/CAT 2, NFPA 70E
Compliant, UL Classified NFPA 2112



6oz. FR Uniform Shirts

Style#: GOS6



Colors: Gray [GOS6GY]
Khaki [GOS6KH]
Navy [GOS6NY]



Sizes: SM, MED, LG, XL, 2XL,
3XL, 4XL, 5XL, 6XL



Lengths: REG, LON



Material: 6oz. 88% Flame-Resistant Cotton/ 12% Nylon Blend with a moisture management finish

Certs: ATPV 8.8 cal/cm², HRC/CAT 2, NFA 70E Compliant, UL Classified ASTM F1506, UL Classified NFA 2112



7oz. FR Uniform Shirts

Style#: GOS7



Colors: Light Gray [GOS7LG]
Khaki [GOS7KH]
Navy [GOS7NY]



Sizes: SM, MED, LG, XL, 2XL,
3XL, 4XL, 5XL, 6XL



Lengths: REG, LON



Material: 7oz. 88% Flame-Resistant Cotton/ 12% Nylon Blend with a moisture management finish

Certs: ATPV 8.9 cal/cm², HRC/CAT 2, NFA 70E Compliant, UL Classified ASTM F1506, UL Classified NFA 2112



FEEL SAFE. WORK SMART. LOOK GOOD.



WHITE PEARL SNAPS!



CAT
2

10oz. FR Welding Shirts



Style#: INKWS



Colors: Khaki [INKWS]



Sizes: 14 1/2, 15, 15 1/2, 16, 16 1/2, 17, 17 1/2, 18, 19, 20, 22, 23, 24



Lengths: S, M, L, XL



Material: 10oz. 100% Flame-Resistant Cotton Gabardine Twill with a moisture management finish

Certs: ATPV 11 cal/cm², HRC/CAT 2, NFA 70E Compliant, UL Classified ASTM F1506, UL Classified NFA 2112



WHITE PEARL SNAPS!



CAT
2

9oz. FR Welding Shirts



Style#: INNWS



Colors: Navy [INNWS]



Sizes: 14 1/2, 15, 15 1/2, 16, 16 1/2, 17, 17 1/2, 18, 19, 20, 22, 23, 24



Lengths: S, M, L, XL



Material: 9oz. 100% Flame-Resistant Cotton Twill with a moisture management finish

Certs: ATPV 13.2 cal/cm², HRC/CAT 2, NFA 70E Compliant, UL Classified ASTM F1506, UL Classified NFA 2112



WHITE PEARL SNAPS!



CAT
2

7oz. FR Western Shirts

Style#: IXX7WS



Colors: Gray [IGR7WS]
Khaki [IKH7WS]
Navy [INV7WS]



Sizes: SM, MED, LG, XL, 2XL,
3XL, 4XL, 5XL, 6XL



Lengths: REG, LON



CAROLINA
PROTECT® **FR®**



Material: 7oz. 100% Flame-Resistant Cotton Twill with a moisture management finish

Certs: ATPV 8.7 cal/cm², HRC/CAT 2, NFA 70E Compliant, UL Classified ASTM F1506, UL Classified NFA 2112

INKWS - 10oz. FR Welding Shirts
<<Page 26





A dark blue pickup truck is parked in a workshop. The tailgate features the text 'YELLOW JACKET' in large, light-colored letters, with 'OILFIELD SERVICES' in smaller letters below it. A black toolbox with 'UWS' on it is on the truck bed. The background shows workshop equipment and a large window.

MEN'S FR PANTS

Flame-resistant work pants
and jeans for comfort, safety,
and compliance.



FEEL SAFE. WORK SMART. LOOK GOOD.



8.5oz. FR Canvas Jeans

Style#:	P-BWCJ85
Colors:	Khaki [P-BWCJ85KH] Moss Green [P-BWCJ85MG] Navy [P-BWCJ85NY]
Waist Sizes:	28, 30, 32, 34, 36, 38, 40, 42, 44, 46, 48, 50, 52, 54, 56, 58, 60
Inseams:	28, 30, 32, 34, 36, 38
Material	8.5oz. 88% Cotton/ 12% Nylon Basket Weave Canvas with an UltraSoft Finish
Certs:	ATPV 9.8 cal/cm ² , HRC/CAT 2, NFPA 70E Compliant, UL Classified ASTM F1506, UL Classified NFPA 2112



9oz. FR Cargo Pants

Style#:	P-INCXXT9
Colors:	Khaki [P-INCKHT9] Navy [P-INCNYT9]
Waist Sizes:	28, 30, 32, 34, 36, 38, 40, 42, 44, 46, 48, 50, 52, 54, 56, 58, 60
Inseams:	28, 30, 32, 34, 36, 38
Material	9oz. 100% Flame-Resistant Cotton Twill with a moisture management finish
Certs:	ATPV 13.2 cal/cm ² , HRC/CAT 2, NFPA 70E Compliant, UL Classified ASTM F1506, UL Classified NFPA 2112



6.5oz. DH FR Uniform Cargo Pants

Style#:	P-DH6XXCP
Colors:	Khaki [P-DH6KHCP] Navy [P-DH6NYCP] Red [P-DH6RECP] Royal [P-DH6ROCP]
Waist Sizes:	28, 30, 32, 34, 36, 38, 40, 42, 44, 46, 48, 50, 52, 54, 56, 58, 60
Inseams:	28, 30, 32, 34, 36, 38
Material	Khaki, Red, & Royal - 6.5oz. Westex® DH Twill - 48% Tencel / 40% Modacrylic / 12% Para-aramid Navy - 6.5oz. Westex® DH Twill - 47% Tencel / 38% Modacrylic / 15% Para-aramid
Certs:	ATPV 8.9 cal/cm ² , HRC/CAT 2, NFPA 70E Compliant, UL Classified NFPA 2112

Westex
UltraSoft®

CAROLINA
PROTECT® **FR®**

Westex® DH



Looking for pants or jeans with a size 29, 31, 33, 35, or 37 waist? Need a 29, 31, 33, 35, or 37" inseam?

Odd sizes are available by special order. Contact your retailer for more information.



7oz. FR Uniform Pants

Style#:	P-XXX7
Colors:	Gray [P-GRY7] Khaki [P-INK] Navy [P-INN7] Orange [P-ORA7] Red [P-IRE7] Royal [P-IRO7]
Waist Sizes:	28, 30, 32, 34, 36, 38, 40, 42, 44, 46, 48, 50, 52, 54, 56, 58, 60
Inseams:	28, 30, 32, 34, 36, 38
Material:	7oz. 100% Flame-Resistant Cotton Twill with a moisture management finish
Certs:	ATPV 8.7 cal/cm ² , HRC/CAT 2, NFPA 70E Compliant, UL Classified ASTM F1506, UL Classified NFPA 2112



7oz. FR Uniform Pants

Style#:	P-XXXAC
Colors:	Gray [P-GRYAC] Khaki [P-INKAC] Navy [P-INNAC]
Waist Sizes:	28, 30, 32, 34, 36, 38, 40, 42, 44, 46, 48, 50, 52, 54, 56, 58, 60
Inseams:	28, 30, 32, 34, 36, 38
Material:	7oz., Advanced Comfort 88% Long Staple Cotton/12% Nylon Blend Twill with UltraSoft Finish
Certs:	ATPV 8.3 cal/cm ² , HRC/CAT 2, NFPA 70E Compliant, UL Classified ASTM F1506, UL Classified NFPA 2112





\$1 - DONATED *for every pair* of
FR Utility Jeans purchased.
Your purchase supports
FALLEN LINEMEN ORGANIZATION!



10oz. FR Modern Carpenter Jeans

Style#:	P-INDC10
Colors:	Medium Washed Denim [P-INDC10]
Waist Sizes:	28, 30, 32, 34, 36, 38, 40, 42, 44, 46, 48, 50, 52, 54, 56, 58, 60
Inseams:	28, 30, 32, 34, 36, 38
Material:	10oz. Flame-Resistant 100% Cotton Denim with moisture management
Certs:	ATPV 15 cal/cm ² , HRC/CAT 2, NFPA 70E Compliant, UL Classified ASTM F1506, UL Classified NFPA 2112



Looking for pants or jeans with a size 29, 31, 33, 35, or 37 waist?

Need a 29, 31, 33, 35, or 37" inseam?

Odd sizes are available by special order. Contact your retailer for more information.



10oz. FR Modern Jeans

Style#:	P-INDM10
Colors:	Dirty Washed Denim [P-INDM10]
Waist Sizes:	28, 30, 32, 34, 36, 38, 40, 42, 44, 46, 48, 50, 52, 54, 56, 58, 60
Inseams:	28, 30, 32, 34, 36, 38
Material:	10oz. Flame-Resistant 100% Cotton Denim with moisture management
Certs:	ATPV 15 cal/cm ² , HRC/CAT 2, NFPA 70E Compliant, UL Classified ASTM F1506, UL Classified NFPA 2112



13oz. FR Relaxed Jeans

Style#:	D-PIND
Colors:	Washed Denim [D-PIND]
Waist Sizes:	28, 30, 32, 34, 36, 38, 40, 42, 44, 46, 48, 50, 52, 54, 56, 58, 60
Inseams:	28, 30, 32, 34, 36, 38
Material:	13oz. Flame-Resistant 100% Cotton Denim with moisture management
Certs:	ATPV 18 cal/cm ² , HRC/CAT 2, NFPA 70E Compliant, UL Classified NFPA 2112, UL Classified ASTM F1506



13oz. FR Denim Bib Overalls

Style#:	B13FRDN
Colors:	Washed Denim [B13FRDN]
Sizes:	SM, MED, LG, XL, 2XL, 3XL, 4XL, 5XL, 6XL
Lengths:	SHO, REG, TAL, XTA
Material:	13oz. Flame-Resistant 100% Cotton Denim with moisture management
Certs:	ATPV 18 cal/cm ² , HRC/CAT 2, NFPA 70E Compliant, UL Classified ASTM F1506, UL Classified NFPA 2112





The background image shows a construction site at dusk. In the foreground, a control panel with a screen and buttons is visible. In the background, two workers in hard hats and work clothes are walking. The scene is lit with warm, low-angle light.

MEN'S FR WINTER WEAR

A variety of outerwear styles
with performance fabric to
keep you safe, warm, dry,
and protected.



FEEL SAFE. WORK SMART. LOOK GOOD.



Pullover

Full Zip

12.5oz. FR Hoodie Sweatshirts

Style#:	SWHFR14NY
Colors:	Navy [SWHFR14NY]
Sizes:	SM, MED, LG, XL, 2XL, 3XL, 4XL, 5XL, 6XL
Lengths:	REG, LON
Material:	12.5oz. Flame-Resistant 95/5 Cotton-Spandex Blend Fleece
Certs:	ATPV 17 cal/cm ² , HRC/CAT 2, NFPA 70E Compliant, UL Classified NFPA 2112

12.5oz. FR Full Zip Hoodies

Style#:	SWHFR14ZNY
Colors:	Navy [SWHFR14ZNY]
Sizes:	SM, MED, LG, XL, 2XL, 3XL, 4XL, 5XL, 6XL
Lengths:	REG, LON
Material:	12.5oz. Flame-Resistant 95/5 Cotton-Spandex Blend Fleece
Certs:	ATPV 17 cal/cm ² , HRC/CAT 2, NFPA 70E Compliant, UL Classified NFPA 2112





7oz. FR Utility Jackets

Style#: JUFR7NY

Colors: Navy [JUFR7NY]

Sizes: SM, MED, LG, XL, 2XL, 3XL, 4XL, 5XL, 6XL

Lengths: REG, LON

Material: 7oz. 100% Flame-Resistant cotton outer shell & 7oz. 100% Flame-Resistant cotton lining

Certs: ATPV 24 cal/cm², HRC/CAT 2, NFPA 70E Compliant, UL Classified NFPA 2112

7oz. FR Utility Hoods

Style#: PKHD7NY

Colors: Navy [PKHD7NY]

Sizes: One Size Fits All



JTFRWS9 FR Windshield Jacket **Page 38**
P-INDM10 FR Modern Jeans **Page 33**



FEEL SAFE. WORK SMART. LOOK GOOD.



9oz. FR Fleece Lined Vests

Style#: V-FRWS9



Colors: Brown [V-FRWS9BR]
Gray [V-FRWS9GY]
Navy [V-FRWS9NY]



Sizes: SM, MED, LG, XL, 2XL,
3XL, 4XL, 5XL, 6XL



Lengths: REG, LON



Material: Shell: Windshield 9oz. Flame-Resistant 94%
Cotton/6% Cotton PU Laminate Duck
Lining: 12oz. 95% Cotton/5% Spandex Fleece

Certs: ATPV 44 cal/cm², HRC/CAT 4, NFPA 70E
Compliant, UL Classified NFPA 2112



9oz. FR Insulated Jackets

Style#: JTFRWS9



Colors: Brown [JTFRWS9BR]
Gray [JTFRWS9GY]
Navy [JTFRWS9NY]
Red [JTFRWS9RE]



Sizes: SM, MED, LG, XL, 2XL,
3XL, 4XL, 5XL, 6XL



Lengths: REG, LON



Compatible with: **HDWS**

Material: Shell: Windshield 9oz. Flame-Resistant 94%
Cotton/6% Cotton PU Laminate Duck
Lining: 12oz. quilted lining-46% Cotton/50% FR
Non Woven Modacrylic/4% FR Polyester

Certs: ATPV 43.5 cal/cm², HRC/CAT 4, NFPA 70E
Compliant, UL Classified NFPA 2112



9oz. FR Insulated Chore Coats

Style#: JCFRWS9



Colors: Brown [JCFRWS9BR]
Gray [JCFRWS9GY]
Navy [JCFRWS9NY]
Red [JCFRWS9RE]



Sizes: SM, MED, LG, XL, 2XL,
3XL, 4XL, 5XL, 6XL



Lengths: REG, LON



Compatible with: **HDWS**

Material: Shell: Windshield 9oz. Flame-Resistant 94%
Cotton/6% Cotton PU Laminate Duck

Lining: 12oz. quilted lining-46% Cotton/50% FR
Non Woven Modacrylic/4% FR Polyester

Certs: ATPV 43.5 cal/cm², HRC/CAT 4, NFPA 70E
Compliant, UL Classified NFPA 2112



9oz. FR Insulated Parkas

Style#: PKFRWS9



Colors: Gray [PKFRWS9GY]
Navy [PKFRWS9NY]
Red [PKFRWS9RE]



Sizes: SM, MED, LG, XL, 2XL,
3XL, 4XL, 5XL, 6XL



Lengths: REG, LON



Compatible with: **PKHDWS**

Material: Shell: Windshield 9oz. Flame-Resistant 94%
Cotton/6% Cotton PU Laminate Duck

Lining: 14oz. quilted lining-40% Cotton/57% FR
Non Woven Modacrylic/3% FR Polyester

Certs: ATPV 40 cal/cm², HRC/CAT 4, NFPA 70E
Compliant, UL Classified NFPA 2112



FEEL SAFE. WORK SMART. LOOK GOOD.



Compatible with: **HDWS**

9oz. FR Insulated Bibs

Style#:	BIFRWS9
Colors:	Brown [BIFRWS9BR], Gray [BIFRWS9GY], Navy [BIFRWS9NY], Red [BIFRWS9RE]
Sizes:	SM, MED, LG, XL, 2XL, 3XL, 4XL, 5XL, 6XL
Lengths:	REG, LON
Material:	Shell: Windshield 9oz. Flame-Resistant 94% Cotton/6% Cotton PU Laminate Duck Lining: 14oz. 40% Cotton/57% FR Non Woven Modacrylic/3% FR Polyester
Certs:	ATPV 40 cal/cm ² , HRC/CAT 4, NFPA 70E Compliant, UL Classified NFPA 2112

9oz. FR Insulated Coveralls

Style#:	CIFRWS9
Colors:	Brown [CIFRWS9BR], Gray [CIFRWS9GY], Navy [CIFRWS9NY], Red [CIFRWS9RE]
Sizes:	SM, MED, LG, XL, 2XL, 3XL, 4XL, 5XL, 6XL
Lengths:	REG, LON
Material:	Shell: Windshield 9oz. Flame-Resistant 94% Cotton/6% Cotton PU Laminate Duck Lining: 14oz. 40% Cotton/57% FR Non Woven Modacrylic/3% FR Polyester
Certs:	ATPV 40 cal/cm ² , HRC/CAT 4, NFPA 70E Compliant, UL Classified NFPA 2112





Compatible with: **PKFRWS9**

9oz. FR Insulated Parka Hoods

Style#:	PKHDWS
Colors:	Gray [PKHDWSGY], Navy [PKHDWSNY], Red [PKHDWSRE]
Sizes:	One Size Fits All
Material:	Shell: Windshield 9oz. Flame-Resistant 94% Cotton/6% Cotton PU Laminate Duck Lining: 12oz. 46% Cotton/50% Non-Woven Modacrylic/4% Polyester
Certs:	ATPV 43.5 cal/cm ² , HRC/CAT 4, NFPA 70E Compliant, NFPA 2112 Compliant



Compatible with: **CIFRWS9, JCFRWS9, JTFRWS9**

9oz. FR Insulated Hoods

Style#:	HDWS
Colors:	Brown [HDWSBR], Gray [HDWSGY], Navy [HDWSNY], Red [HDWSRE]
Sizes:	One Size Fits All
Material:	Shell: Windshield 9oz. Flame-Resistant 94% Cotton/6% Cotton PU Laminate Duck Lining: 12oz. 46% Cotton/50% Non-Woven Modacrylic/4% Polyester
Certs:	ATPV 43.5 cal/cm ² , HRC/CAT 4, NFPA 70E Compliant, NFPA 2112 Compliant







LADIES FR WORKWEAR

Our ladies' products are designed and crafted with her needs in mind for fit, fabric, and on-the-job functionality.



FEEL SAFE. WORK SMART. LOOK GOOD.



CAT
2



MIC LOOPS

6.5oz. Ladies DH FR Uniform Shirts

Style#:	L-SFRDH6
Colors:	Khaki [L-SFRDH6KH] Navy [L-SFRDH6NY] Red [L-SFRDH6RE] Royal [L-SFRDH6RO]
Sizes:	SM, MED, LG, XL, 2XL, 3XL, 4XL, 5XL, 6XL
Lengths:	SHO, REG, LON

Westex® DH

Material: **Khaki, Red, & Royal** - 6.5oz. Westex® DH Twill - 48% Tencel / 40% Modacrylic / 12% Para-aramid
Navy - 6.5oz. Westex® DH Twill - 47% Tencel / 38% Modacrylic / 15% Para-aramid

Certs: ATPV 8.9 cal/cm², HRC/CAT 2, NFPA 70E Compliant, UL Classified NFPA 2112



CAT
2



6.5oz. Ladies DH FR Uniform Cargo Pants

Style#:	L-PFRDHC6
Colors:	Khaki [L-PFRDHC6KH] Navy [L-PFRDHC6NY] Red [L-PFRDHC6RE] Royal [L-PFRDHC6RO]
Sizes:	0, 2, 4, 6, 8, 10, 12, 14, 16, 18, 20, 22, 24, 26
Lengths:	SHO, REG, TAL

Westex® DH

Material: **Khaki, Red, & Royal** - 6.5oz. Westex® DH Twill - 48% Tencel / 40% Modacrylic / 12% Para-aramid
Navy - 6.5oz. Westex® DH Twill - 47% Tencel / 38% Modacrylic / 15% Para-aramid

Certs: ATPV 8.9 cal/cm², HRC/CAT 2, NFPA 70E Compliant, UL Classified NFPA 2112

New

NOTICE
AUTHORIZED
PERSONNEL
ONLY



**CAROLINA
PROTECT®**

**CAT
2**



Exclusive Custom Comfort Waist
with adjustable elastic waist band

6oz. Ladies FR Modern Coveralls

Style#:	L-GOCD6	Colors:	Gray [L-GOCD6GY] Khaki [L-GOCD6KH] Navy [L-GOCD6NY]
Sizes:	XS, SM, MED, LAR, XL, 2XL, 3XL, 4XL, 5XL, 6XL	Lengths:	SHO, REG, TAL
Material:	6oz. 88/12 Flame-Resistant Cotton/ Nylon Blend with a moisture management finish	Certs:	ATPV 8.8 cal/cm ² , HRC/CAT 2, NFPA 70E Compliant, UL Classified NFPA 2112, UL Classified ASTM F1506



FEEL SAFE. WORK SMART. LOOK GOOD.



CAT
2

6oz. Ladies FR Polo Shirts

Style#: L-SPFR6

Colors: Gray [L-SPFR6GY]
Khaki [L-SPFR6KH]
Navy [L-SPFR6NY]

Sizes: SM, MED, LG, XL,
2XL, 3XL, 4XL, 5XL,
6XL

Lengths: REG, LON



Material: 6oz. Flame-Resistant
93% Cotton 7% Spandex Knit
with moisture management

Certs: ATPV 8.1 cal/cm², HRC/CAT 2,
NFPA 70E Compliant,
UL Classified NFPA 2112



CAT
2

11oz. Ladies FR Comfort Stretch Jeans

Style#: L-PFRSD11M

Colors: Dark Wash Denim
[L-PFRSD11M]

Sizes: 0, 2, 4, 6, 8, 10, 12,
14, 16, 18, 20, 22, 24,
26

Lengths: SHO, REG, TAL



Material: 11oz. Flame-Resistant Comfort Flex Denim 69%
Cotton/30% Modacrylic /1% Elastane

Certs: ATPV 14 cal/cm², HRC/CAT 2, NFPA 70E
Compliant, UL Classified NFPA 2112



Westex
UltraSoft AC®

CAT
2



7oz. Ladies FR Uniform Shirts

Style#:	L-SFRAC
Colors:	Gray [L-SFRACGY] Khaki [L-SFRACKH] Navy [L-SFRACNY]
Sizes:	SM, MED, LG, XL, 2XL, 3XL, 4XL, 5XL, 6XL
Lengths:	SHO, REG, LON
Material:	7oz. Advanced Comfort 88% Long Staple Cotton/ 12% Nylon Blend Twill with an UltraSoft finish
Certs:	ATPV 8.3 cal/cm ² , HRC/CAT 2, NFPA 70E Compliant, UL Classified ASTM F1506, UL Classified NFPA 2112



Westex
UltraSoft AC®

CAT
2



7oz. Ladies FR Uniform Pants

Style#:	L-PFRAC
Colors:	Gray [L-PFRACGY] Khaki [L-PFRACKH] Navy [L-PFRACNY]
Sizes:	0, 2, 4, 6, 8, 10, 12, 14, 16, 18, 20, 22, 24, 26
Lengths:	SHO, REG, TAL
Material:	7oz. Advanced Comfort 88% Long Staple Cotton/ 12% Nylon Blend Twill with an UltraSoft finish
Certs:	ATPV 8.3 cal/cm ² , HRC/CAT 2, NFPA 70E Compliant, UL Classified ASTM F1506, UL Classified NFPA 2112



CAROLINA
PROTECT® **FR®**

CAT
2



10oz. Ladies FR Modern Jeans

Style#:	L-PFRD10M
Colors:	Washed Denim [L-PFRD10M]
Sizes:	0, 2, 4, 6, 8, 10, 12, 14, 16, 18, 20, 22, 24, 26
Lengths:	SHO, REG, TAL
Material:	10oz. 100% Flame-Resistant Cotton Denim
Certs:	ATPV 15 cal/cm ² , HRC/CAT 2, NFPA 70E Compliant, UL Classified ASTM F1506, UL Classified NFPA 2112





FR ACCESSORIES

FR accessories like face coverings, balaclavas, and caps for extra protection in any environment.



FEEL SAFE. WORK SMART. LOOK GOOD.



6oz. FR Face Masks

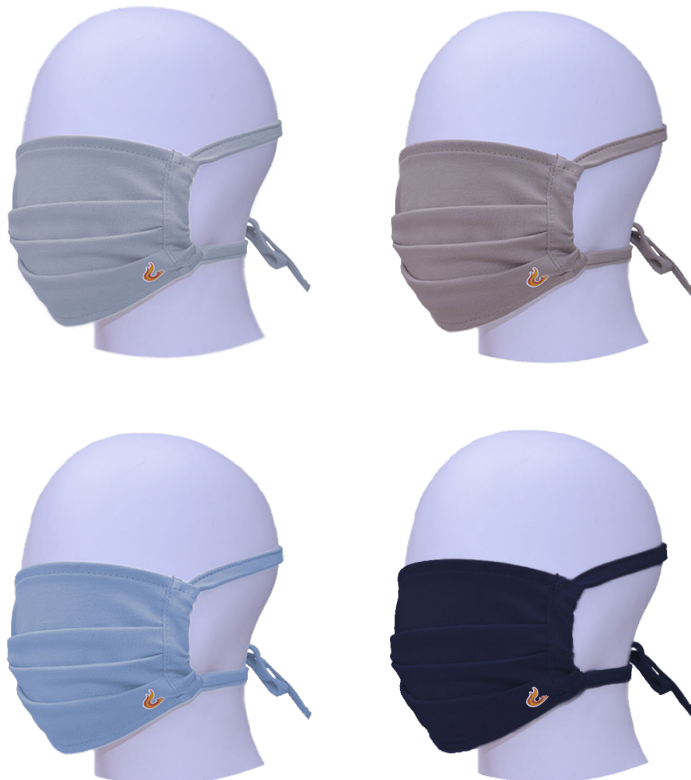
Style#: M-FRKXX6

Colors: Gray [M-FRKG6]
Khaki [M-FRKKH6]
Navy [M-FRKNY6]

Sizes: One Size Fits All

Material: 6oz. Flame-Resistant 93% Cotton 7% Spandex Knit ith moisture management

Certs: ATPV 8.1 cal/cm², HRC/CAT 2, NFPA 70E Compliant



7oz. FR Face Masks

Style#: M-FRKXX7

Colors: Gray [M-FRKG7]
Khaki [M-FRKKH7]
Medium Blue [M-FRKMB7]
Navy [M-FRKNY7]

Sizes: One Size Fits All

Material: 7oz. Flame-Resistant 93% Cotton 7% Spandex Knit ith moisture management

Certs: ATPV 8.9 cal/cm², HRC/CAT 2, NFPA 70E Compliant





REVERSE
BALFRD7NG



REVERSE
BALFRD7NK



BALFRD7NY



LOW CROWN

7oz. FR Neck Gaiters

Style#:	NG-FRRXX7
Colors:	Khaki [NG-FRRKH7]
Sizes:	One Size Fits All
Material:	7oz. Flame-Resistant Rib Knit - 95% Cotton/ 5% Spandex
Certs:	ATPV 10.3 cal/cm ² , HRC/CAT 3, NFPA 70E Compliant



7oz. FR Balaclavas

Style#:	BALFRD7
Colors:	Navy/Gray [BALFRD7NG] Navy/Khaki [BALFRD7NK] Navy/Navy [BALFRD7NY]
Sizes:	One Size Fits All
Material:	7oz. Flame-Resistant Rib Knit - 95% Cotton/ 5% Spandex
Certs:	ATPV 33 cal/cm ² , HRC/CAT 3, NFPA 70E Compliant



7oz. FR 6-Panel Welding Caps

Style#:	LAP-6CFR
Colors:	Gray [LAP-6CFRGY] Khaki [LAP-6CFRKH] Navy [LAP-6CFRNY]
Sizes:	6 3/8, 6 1/2, 6 5/8, 6 3/4, 6 7/8, 7, 7 1/8, 7 1/4, 7 3/8, 7 1/2, 7 5/8, 7 3/4, 7 7/8, 8
Material:	7oz. Flame-Resistant 100% Cotton Twill
Certs:	ATPV 8.7 cal/cm ² , HRC/CAT 2, NFPA 70E Compliant





LAPCO





MEN'S NON-FR WORKWEAR

LAPCO offers non-flame-resistant products including garments and accessories for welders and other trade professions.



10oz. Heavy-Duty Welding Shirts

Style#: LS

Material: 10oz. 100% Cotton Gabardine Twill

Colors: Khaki [LS]

Sizes: 14 1/2, 15, 15 1/2, 16, 16 1/2, 17, 17 1/2, 18, 19, 20, 22, 23, 24

Lengths: S, M, L, XL



WHITE PEARL SNAPS!



10oz. Heavy-Duty Welding Shirts

Style#: DS

Material: 10oz. 100% Cotton Denim

Colors: Denim [DS]

Sizes: 14 1/2, 15, 15 1/2, 16, 16 1/2, 17, 17 1/2, 18, 19, 20, 22, 23, 24

Lengths: S, M, L, XL



WHITE PEARL SNAPS!



8.5oz. Mid-Weight Welding Shirts

Style#: 850

Material: 8.5oz. 100% Cotton Twill

Colors: Khaki [850]

Sizes: SM, MED, LG, XL, 2XL, 3XL, 4XL, 5XL, 6XL

Lengths: REG, LON



WHITE PEARL SNAPS!



4-Panel Welding Caps

Style#:	LAP-C	HIGH CROWN
Material:	Preshrunk 100% Cotton	
Colors:	Assorted [LAP-C] Black [LAP-CB] White [LAP-CW]	
Sizes:	6 ³ / ₈ , 6 ¹ / ₂ , 6 ⁵ / ₈ , 6 ³ / ₄ , 6 ⁷ / ₈ , 7, 7 ¹ / ₈ , 7 ¹ / ₄ , 7 ³ / ₈ , 7 ¹ / ₂ , 7 ⁵ / ₈ , 7 ³ / ₄ , 7 ⁷ / ₈ , 8	



6-Panel Welding Caps

Style#:	LAP-6C	LOW CROWN
Material:	Preshrunk 100% Cotton	
Colors:	Assorted [LAP-6C] Black [LAP-6CB] White [LAP-6CW] Camo [LAP-CC]	
Sizes:	6 ³ / ₈ , 6 ¹ / ₂ , 6 ⁵ / ₈ , 6 ³ / ₄ , 6 ⁷ / ₈ , 7, 7 ¹ / ₈ , 7 ¹ / ₄ , 7 ³ / ₈ , 7 ¹ / ₂ , 7 ⁵ / ₈ , 7 ³ / ₄ , 7 ⁷ / ₈ , 8	
LAPCOT™ welding caps are the welder's choice in high-quality welding caps.		
<ul style="list-style-type: none">• Pre-shrunk and fully reversible• Sizes 6 3/8 – 8• 100% cotton		

LAP-C | 4-Panel Welding Caps
LAP-6C | 6-Panel Welding Caps **above**





LAP-UM7 | Heavy Duty Industrial Umbrellas
at right



One Size Fits All Welding Caps

Style#:	LAP-CF	LOW CROWN
Material:	Preshrunk 100% Cotton	
Colors:	Assorted [LAP-CFA] Black [LAP-CFAB] White [LAP-CFAW] Camo [LAP-CFAC]	
Sizes:	One Size Fits All	



Doo Rags

Style#:	LAP-DR	
Material:	Preshrunk 100% Cotton	
Colors:	Assorted [LAP-DRA] Black [LAP-DRB] White [LAP-DRW] Camo [LAP-DRC]	
Sizes:	One Size Fits All	



7' Heavy-Duty Industrial Umbrellas

Style#:	LAP-UM7V
Material:	11oz. Heavy-Duty Vinyl
Colors:	Blue [LAP-UM7VBX] Red [LAP-UM7VRX] Yellow [LAP-UM7VYX]
Sizes:	7'

7' Heavy-Duty Industrial Camo Canvas Umbrellas

Style#:	LAP-UM7ACC
Material:	6.25oz. Heavy-Duty Acrylic Coated Canvas
Colors:	True Timber Camo [LAP-UM7ACC]
Sizes:	7'

7' Heavy-Duty FR Industrial Umbrellas

Style#:	LAP-UM7FRO
Material:	15oz. FR Heavy-Duty Acrylic Coated Canvas
Certs:	Fabric meets: CSFM-Title 19, CPAI-84 (Section 6), FMVSS-302, NFPA 701 (Test Method 2)
Colors:	FR Orange [LAP-UM7FRO]
Sizes:	7'



Heavy-Duty Umbrella Carrying Cases

Style#:	LAP-UMBCASE
---------	-------------

These black, heavy-duty plastic umbrella carrying cases will keep your umbrella safe and easy to transport.

- 60" Long x 5.5" Diameter.
- Sturdy snap-on/off end caps.
- Fits 7' LAPCO™ Umbrellas.

Heavy-Duty Umbrella Stands

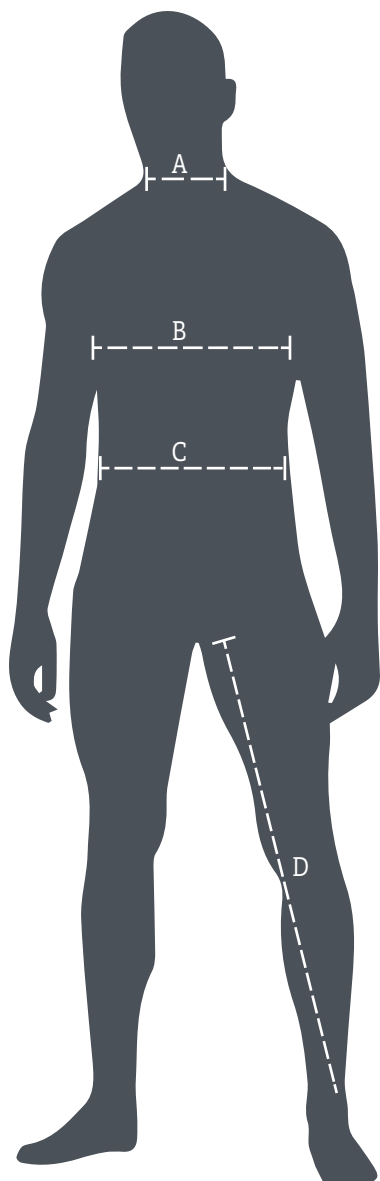
Style#:	LAP-UMST
---------	----------

Adjustable heavy-duty tripod umbrella stand fits all LAPCO Umbrellas.

- Each leg is 38.75" long
- Stand is 28" high when fully extended
- Bottoms of legs are approx. 52" apart when fully extended
- Black powder coated aluminum with black plastic end caps
- Fits poles up to 1.5" in diameter
- Each leg has a foot plate with an anchor hole



Sizing Guide



Mens

A. Neck

Measure around the middle of your neck at collar level, keeping the tape loose to make allowance for comfort.

B. Chest

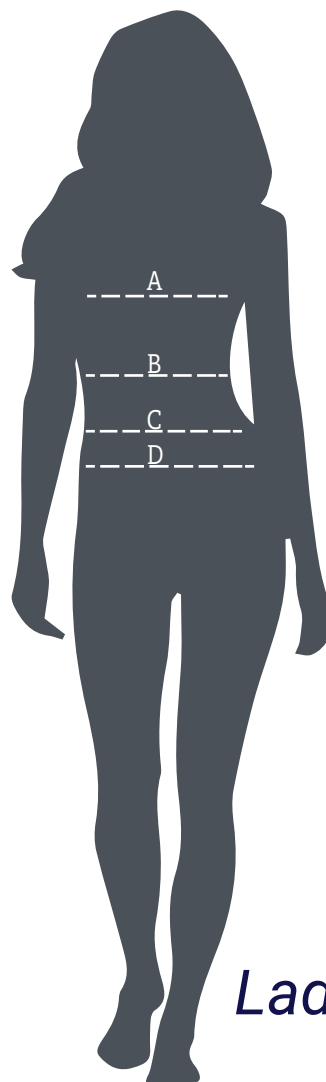
With arms at sides, measure under your arms around the fullest part of your chest. Hold one finger between body and tape.

C. Waist

Measure around your natural waistline while holding one finger between body and tape.

D. Inseam

Measure from the crotch seam to the bottom of the inside leg of a well-fitting pair of pants.



Ladies

A. Bust

Measure under your arms and across shoulder blades, around the fullest part of your bust. Hold one finger between body and tape.

B. Waist

Measure around your natural waistline while holding one finger between body and tape. This is the smallest part of your waist.

C. High Hip

Measure the protruding points of your hip bones, approx. 3" below your natural waist.

D. Low Hip

Measure the widest point of your hip, approx. 8" below your natural waist.

TIPS FOR FINDING THE RIGHT SIZE & FIT

- * Check your body measurements and compare with the data in the tables that follow.
- * We recommend asking a friend to measure you for better accuracy.
- * When taking your measurements, use a cloth tape measure, not a metal one.
- * Measurements should be taken over standard undergarments.
- * If you are in between sizes, choose the larger size.
- * Measurements refer to the body; not garment measurements.
- * Use the same tables for non-FR garments.
- * If you are unsure about what size to order, contact us. We are always happy to help!

NOTE: Stock sizes shown. Special order sizes may be available by request.

The size conversion chart is a guide only, actual sizing may vary according to the style and fit of the garment. All measurements are in inches.

MENS COVERALL SIZING

To find your coverall size, measure your chest, waist, and inseam. If your chest measurement is larger than your waist measurement, use your chest measurement to find your size. If your waist measurement is larger than your chest measurement, use your waist measurement to find your size. If you are looking for a numeric size, use your chest/waist measurement as the corresponding size.

CVFRD7 / CVEFR7 / CVIN9 / CVDHF6 / GOCD6 / GOCD7									
Alpha Size	SM	MED	LAR	XL	2XL	3XL	4XL	5XL	6XL
Chest	34-36	38-40	42-44	46-48	50-52	54-56	58-60	62-64	66-68
Waist	34-36	38-40	42-44	46-48	50-52	54-56	58-60	62-64	66-68

Length	SHO	REG	TAL	XTA
Inseam	28	30	32	34

Short sizes are 1/2" shorter than Regular sizes in the torso. Short sleeve lengths are 1 1/2" shorter than Regular sleeve lengths. Tall sizes are 1/2" longer than Regular sizes in the torso. Tall sleeve lengths are 1 1/2" longer than Regular sleeve lengths. Extra Tall sizes are 1" longer than Regular sizes in the torso. Extra Tall sleeve lengths are 3" longer than Regular sleeve lengths.

MENS ALPHA TO NUMERIC SHIRT SIZING

To find your shirt size, use your neck, chest, and sleeve measurement. Sleeve length can be found by measuring from the center back of your neck to the end of your shoulder at the top of your arm then to your wrist where you would like your shirt cuff to sit.

IXXX7 / IBW7 / IXX7WS / IHV7C2 / IHV7C3 / DH6 / GOSAC7 / GOS6 / GOS7 / LS / DS / 850									
Alpha Size	SM	MED	LAR	XL	2XL	3XL	4XL	5XL	6XL
Neck Size	14.5-15	15.5-16	16.5-17	17.5-18	19	20	22	23	24
Chest	34-36	38-40	42-44	46-48	50-52	54-56	58-60	62-64	66-68
SHO Sleeve	31-32	32-33	33-34	34	35	35	36	36	36
REG Sleeve	32-33	33-34	34-35	35	36	36	37	37	37
LON Sleeve	33-34	34-35	35-36	36	37	37	38	38	38
XLO Sleeve	34-35	35-36	36-37	37	38	38	39	39	39

Short sizes are 2" shorter than Regular sizes in the torso. Long sizes are 2" longer than Regular sizes in the torso. Extra Tall sizes are 5" longer than Regular sizes in the torso.

MENS KNIT SHIRT SIZING

To find your knit shirt size, use your chest measurement. Measuring the sleeve and body length of a well fitting knit shirt can also be helpful. Sleeve length can be found by measuring from the end of your shoulder at the top of your arm then to your wrist where you would like your shirt cuff to sit. Body length can be found by measuring from the base of the back of your neck down to the point where you want your shirt to end.

FRT-USHLSP6 / FRT-HJE / FRT-HJE HV2 / FRT-HJE HV3									
Alpha Size	SM	MED	LAR	XL	2XL	3XL	4XL	5XL	6XL
Chest	39	42	45	48	51	54	57	60	63
REG Body	29	29 7/8	30 3/4	31 5/8	32 1/2	33 3/8	34 1/4	35 1/8	36
LON Body	31	31 3/4	32 5/8	33 1/2	34 3/8	35 1/4	36 1/8	37	38
REG Sleeve	25 7/8	26 3/8	26 7/8	27 3/8	27 7/8	28 3/8	28 7/8	29 3/8	29 7/8
LON Sleeve	28	28 1/2	29	29 1/2	30	30 1/2	31	31 1/2	32

Sizing Guide

MENS JEANS AND PANTS SIZING

To find your size, use your waist and inseam measurements.

P-BWCJ85 / P-INCXXT9 / P-DH6XXCP / P-XXX7 / P-XXXAC / P-INDFC11 / P-INDM10U / P-INDC10 / P-INDM10 / D-PIND																	
Numeric Size	28	30	32	34	36	38	40	42	44	46	48	50	52	54	56	58	60
Waist	28	30	32	34	36	38	40	42	44	46	48	50	52	54	56	58	60
Hip	34	36	38	40	42	44	46	48	50	52	54	56	58	60	62	64	66
Inseam	28	30	32	34	36	38											

MENS UNLINED BIB OVERALL SIZING

To find your bib size, choose the alpha size that corresponds to your preferred jeans waist size.

B13FRDN																					
Alpha Size	SM		MED		LAR		XL		2XL		3XL		4XL			5XL			6XL		
Jeans Waist	30	32	32	34	36	38	38	40	40	42	42	44	44	46	48	50	52	54	54	56	58
Length	SHO		REG		TAL																
Men's Height	5'4" - 5'7"		5'8" - 6'		6'1" - 6'5"																

MENS HOODIE SIZING

To find your hoodie size, use your chest measurement. Measuring the sleeve and body length of a well-fitting hoodie can also be helpful. Sleeve length can be found by measuring from the end of your shoulder at the top of your arm then to your wrist where you would like your cuff to sit. Body length can be found by measuring from the base of the back of your neck down to the point where you want your garment to end.

SWHFR14NY / SWHFR14NY									
Alpha Sizes	SM	MED	LAR	XL	2XL	3XL	4XL	5XL	6XL
Chest	34-36	38-40	42-44	46-48	50-52	54-56	58-60	62-64	66-68
Sleeve Length	26 1/4	26 3/4	27 1/4	27 3/4	28 1/4	28 3/4	29 1/4	29 3/4	30 1/4
Back Length	26 3/8	27	27 1/2	28 1/8	28 5/8	29 1/4	29 3/4	30 3/8	30 7/8

MENS OUTERWEAR SIZING

To find your jacket size, use your chest measurement. To find your insulated coverall sizing, use your chest and inseam measurement. To find your insulated bib size, use your waist and inseam measurement. If you plan to wear clothing under your insulated coveralls/bibs, choose a larger size to accommodate for extra garments.

JUFR7NY / JTFRWS9 / JCFRWS9 / PKFRWS9 / BIFRWS9 / CIFRWS9 / V-FRWS9									
Alpha Sizes	SM	MED	LAR	XL	2XL	3XL	4XL	5XL	6XL
Chest/Waist	30 - 32	34 - 36	35 - 40	42 - 44	46 - 48	50 - 52	54 - 56	58 - 60	62 - 64
Length	REG		TAL						
Inseam	30-32		33-35						
Men's Height	5'8" - 6'		6'1" - 6'5"						

FINDING YOUR FIT MENS

Lapco FR offers a variety of work pant and denim fits. Use the below guide to better understand how our durable Flame-Resistant styles help get the job done.



LOOSE FIT	RELAXED FIT	REGULAR FIT	ORIGINAL FIT
<p>Suited for work that requires a full range of motion</p> <p>Sits at natural waist</p> <p>Generous fit through hips and thighs</p> <p>Designed to fit over work boots</p>	<p>Suited for work that requires a full range of motion</p> <p>Sits slightly below natural waist</p> <p>Roomy fit through hips and thighs</p> <p>Designed to fit over work boots</p>	<p>Provides excellent freedom of movement</p> <p>Sits slightly below natural waist</p> <p>Easy fit through hips and thighs</p> <p>Designed to fit over work boots</p>	<p>Not too loose; not too tight. Traditional uniform fit.</p> <p>Sits at natural waist</p> <p>Straight fit through hips and thighs</p> <p>Designed to fit over work boots</p>
P-INCXXT9	P-INDC10	P-INDM10, P-INDFC11, P-INDM10U (P-INDM10U leg opening is tapered)	P-XXX7, P-XXXAC, P-DH6XXCP, P-BW-CJ85

Sizing Guide

WELDING CAP SIZING

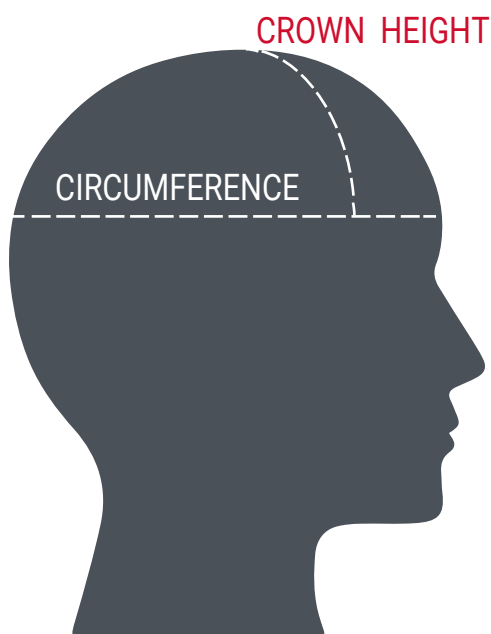
LAP-6CFR / LAP-C / LAP-6C											
Cap Size	6 3/4	6 7/8	7	7 1/8	7 1/4	7 3/8	7 1/2	7 5/8	7 3/4	7 7/8	8
Head Measurement	21 1/8	21 1/2	21 7/8	22 1/4	22 5/8	23	23 1/2	23 7/8	24 1/4	24 5/8	25

HOW TO MEASURE

1. Hold the end of the cloth tape measure to the middle of your forehead. If you are using a standard metallic tape measure, use a piece of string.
2. Wrap the tape or string around your head until you return to the starting point. It should be above your ears, resting at the point you would like your hat to rest.
3. Make sure the tape measure or string is snug around your head, but not too tight. It should be comfortable and just fitted enough to stay put.
4. Write down your measurement in inches. If you are using string, measure the string against your tape measure.
5. Use the size chart above to determine which size will be your best fit. If you are between sizes, choose the larger size.

HOW TO MEASURE CROWN HEIGHT

1. Measure from the crown of the head (highest peak) to the location where you like the bottom of the band.
2. If you have an existing hat that fits fine, lay it down flat on its side. Measure the distance from the top of the crown to the bottom of the band.



LADIES TOPS SIZING

To find your shirt size, use your bust, waist, and sleeve measurement. Sleeve length can be found by placing your arm on your hip to create a bend in the elbow. Measure from the center back of your neck across your shoulder then to your elbow then to your wrist where you would like your shirt cuff to sit.

L-SFRAC / L-SPFR MISSES					
Size	XS	SM	MED	LAR	XL
Bust	32 - 34	34 - 36	36 - 38	38 - 40	42 - 44
Waist	30 - 32	32 - 34	34 - 36	36 - 40	40 - 42
Sleeve	30	30 1/2	30 3/4	31 1/4	31 3/4
REG	27	27 1/4	27 1/2	28	28 1/8
LON	29	29 1/4	29 1/2	30	30 1/2

L-SFRAC / L-SPFR WOMENS					
Size	2XL	3XL	4XL	5XL	6XL
Bust	44 - 46	46 - 48	48 - 50	50 - 52	52 - 54
Waist	42 - 44	44 - 46	46 - 48	48 - 50	50 - 52
Sleeve	32 1/2	33	33 1/2	34 1/4	34 3/4
REG	29 1/4	30	30 1/2	31	31 1/2
LON	31 1/4	32	32 1/2	33	33 1/2

LADIES JEANS AND UNIFORM PANTS SIZING

To find your pant size, use your waist and hip measurement. Please note that our comfort stretch denim may run a bit larger due to the stretch and recovery of the spandex fibers over the course of wearing.

L-PFRAC / L-PFRD10M / L-PFRD11M MISSES									
Size	0	2	4	6	8	10	12	14	16
Waist	29	30	31 1/2	33	34	35 1/2	37	38 1/2	40 1/2
Hip	35 1/2	37	38 1/2	39 1/2	41	42 1/2	44	46	48

L-PFRAC / L-PFRD10M / L-PFRD11M WOMENS							
Size	18	20	22	24	26	28	30
Waist	41-42	43-44	45-46	47-48	49-50	51-52	53-54
Hip	48	50	52	54	56	58	60

Length	SHO	REG	TAL
Inseam	30	32	34

LADIES COVERALLS

To find your coverall size, use your bust and hip measurement.

L-GOCD6 MISSES & WOMENS										
Size	XS	SM	MED	LAR	XL	2XL	3XL	4XL	5XL	6XL
Bust	32-35	35 1/2 - 37 1/2	38 - 40 1/2	41-43	44 1/2 - 46 1/2	47 - 49 1/2	50 - 53	53 1/2 - 56	56 1/2 - 59	59 1/2 - 61 1/2
Hip	34-36	36 1/2 - 38 1/2	39 - 41 1/2	42 - 44	45 - 47 1/2	48 - 50 1/2	51 - 54	54 1/2 - 57	57 1/2 - 60	61 - 63 1/2

Length	SHO	REG	TAL
Inseam	30	32	34

Customization Guide

Custom Embroidered Logos & Designs

Begin with high-quality digitizing. We offer in-house digitizing to ensure the best quality decoration for your uniforms.

LOGO SIZES: Logos placed on shirts or jackets in a left chest position should not exceed 3.5" w x 2.5" h in size. Most logos are sized to fit within 3" to 4" wide. Logos are placed above pockets. Embroidery for the back of apparel items is sized to fit within an area up to 8.75" wide.

LOGO LIMITATIONS: Embroidery is NOT printing. If your artwork includes shadows, gradients or shading, we will have to discuss how to adapt the design to embroidery capabilities. We have some tricks, but there are limits on what can be duplicated with needle and thread. We cannot duplicate gradients within small individual letters, numbers, or other small objects. Gradient effects can be reproduced only within larger objects or shapes. Thread layering and over stitching are used to produce a gradient look. Although this achieves a similar effect, it adds considerable stitching to the digitized design.

LOGO TEXT AND LETTERING: Letters that are too small and certain font styles do not embroider well. Consider the difference in height between capital letters and lowercase letters. Avoid small lettering using fonts with serifs such as TIMES NEW ROMAN, BODONI, BOOK ANTIQUA, or COPPERPLATE. These fonts are very difficult to recreate with needle and thread especially when they are small. Letter sizes must be at least 1/4" high or FONT SIZE of 24 as a MINIMUM at the final embroidered size to embroider legibly.

MATCHING FONTS: There are corporate logos and designs which use custom or unique fonts that we may not have. When sending a vector art file (AI, EPS, PS, PDF, CDR or CMX), convert the text to CURVES, PATHS, or OUTLINES to reduce the possibility of font conflicts. Alternatively, send us your custom TTF font file IF you want us to EDIT your text or if you want us to ADD matching text. Without your unique font file, we may not be able to recreate the text exactly.

LOGO FORMAT: Vector art works best for embroidery. Almost all corporate logos developed by professionals are in vector art format. Vectors are the standard in graphic design, printing and publishing. There are many vector file formats, but these are the most popular: AI, EPS, CDR, and some PDF files. If you are sending a bitmap/raster image, please make sure it is a LARGE, high-quality image. A resolution of 300 dpi is preferred. Bitmap files include BMP, GIF, JPEG, TIFF and many more.



First Name
Last Name

Customization with Patches and Emblems

Patches and emblems serve multiple purposes when used to customize uniforms. They promote your company identity, unite all members of your team under a common symbol, and provide increased security in the workplace and in the field.

STANDARD PATCHES: We offer a variety of standard patches that include country and state flags as well as name patches and safety patches. Name patches are available with a variety of border colors in addition to standard white or black borders to match your needs. You can choose from block or script fonts for names. Name patches come in two standard sizes: 3.5" w x 1.5" h for single names and 4" w x 2" h for full names or name and title.

CUSTOM PATCHES: We offer custom patch designs with your logo, artwork, or message. A variety of options are available for custom logo patch designs. All patches can be sewn on, heat sealed, or made removable and reusable with Velcro™ attachment options.

Custom Heat Transfers

CUSTOM HEAT TRANSFERS: We offer custom heat transfers with your graphic artwork or logo. Flame-Resistant or Non-FR transfers are available. (Note: Cannot be applied to the back of Deluxe Coveralls.)

Custom Reflective Taping

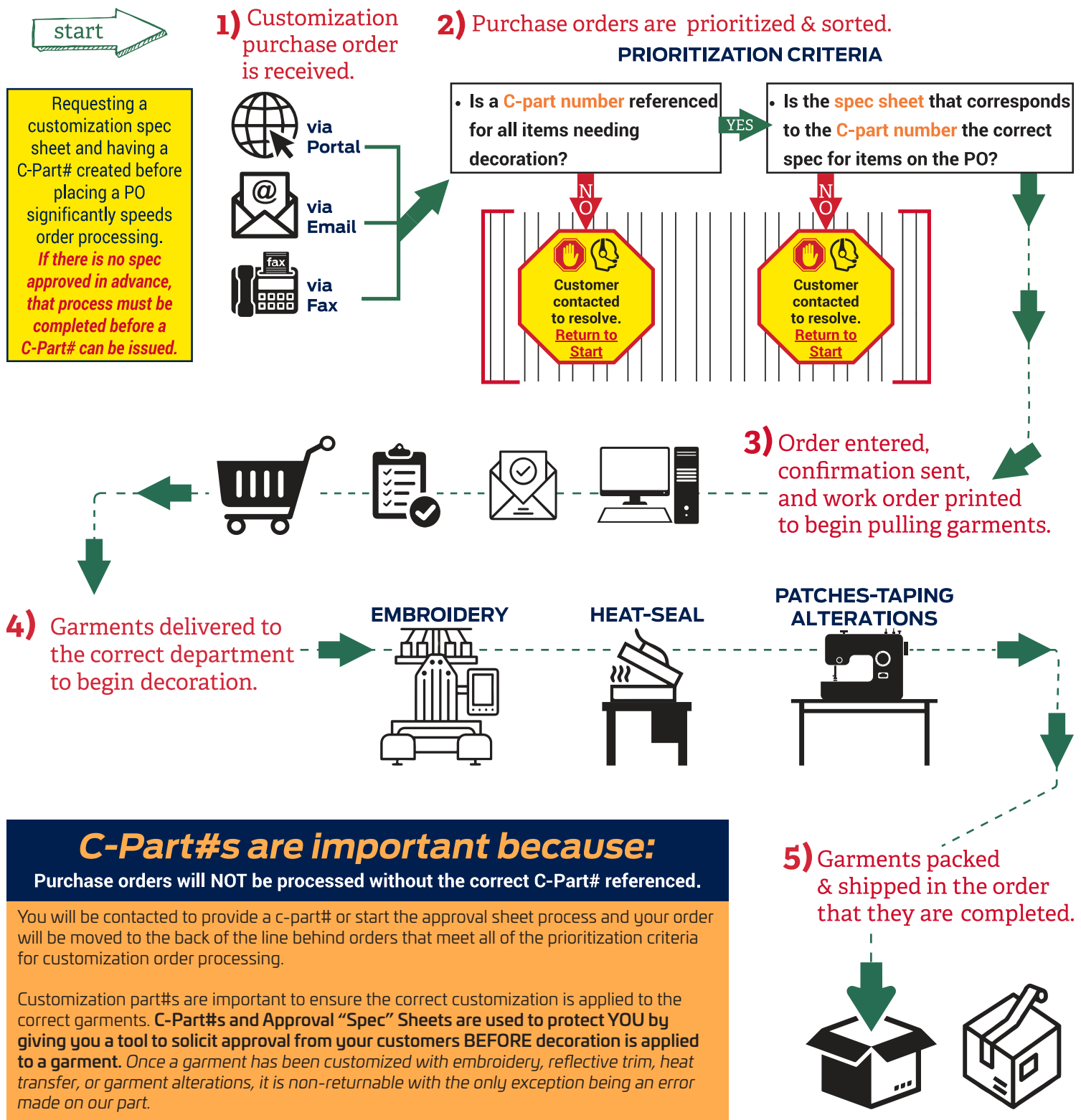
CUSTOM REFLECTIVE TAPE: We offer custom reflective taping for your coveralls, shirts, pants and winterwear. We can help you design a configuration to meet your needs (see page 47).



Customization Guide

Customization Order Processing Workflow

Why is it important to include the correct C-Part# on your Order?



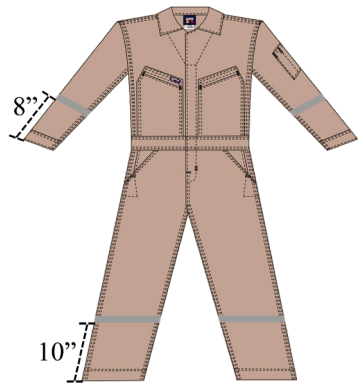
We offer custom configurations to meet all of your reflective trim needs.

Trim styles available : 1" Silver | 2" Silver | 2" Yellow | 2" Yellow/Silver/Yellow | 2" Orange/Silver/Orange

Configuration 1 | Arms & Legs



CVFRD7KH with Configuration 1 shown in 1" Silver Reflective Trim



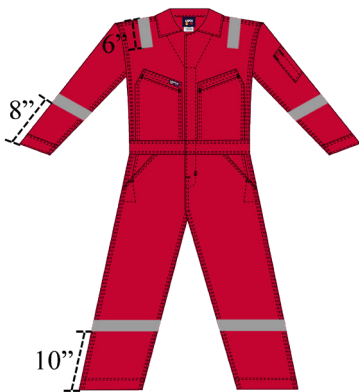
These are just a few examples of the most often requested configurations.

Configuration 2 | Arms, Legs & Shoulders



CVFRD7RE with Configuration 2 shown in 2" Silver Reflective Trim

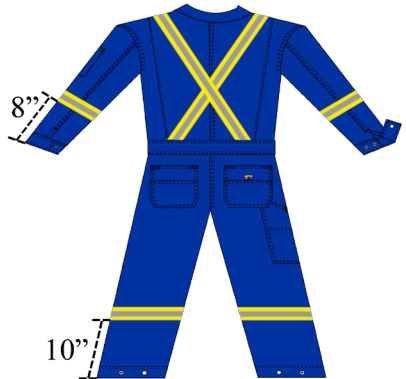
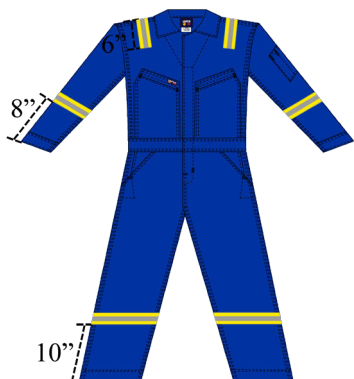
6" down front & back of shoulders



Contact customization@lapco.com for your customized design.

Configuration 3 | Arms, Legs, Shoulders, X on Back

CVFRD7RO with Configuration 3 shown in 2" Yellow/Silver/Yellow (YSY) Reflective Trim



Product & Service Information

To find **Detailed Laundering Instructions**
scan the QR code or visit the **Resources** page at www.lapco.com and
choose **Product Care**.



Scan to find
**Technical Data, FR Clothing Education,
Size Charts,** and more!



THANK YOU
for your support

IT'S WHAT KEEPS OUR BUSINESS GOING.
YOU HAVE OUR ENDLESS GRATITUDE.



MODERN INDUSTRIAL WORKWEAR

FEEL SAFE.



WORK SMART.



LOOK GOOD.

2022 DIGITAL EDITION