





## WELCOME TO THE FUTURE OF WORKWEAR

**2020** is finally here and Rasco is excited to provide you with the latest innovations in workwear. Over the past year, Rasco has not only increased the quality and durability of its existing workwear line, but has launched a new collection of garments specifically designed for industrial laundry.

In support of its new industrial laundry collection, Rasco has grown its partnership with Westex<sub>®</sub> and has launched new partnerships with Glen Raven<sub>®</sub> and DuPont<sub>®</sub>. These partnerships have furthered Rasco's commitment to provide its customers with garments made of the most innovative and protective fabrics available.

**First in Safety<sub>®</sub>** Rasco has been making workwear since 1988 and FR workwear since 2001. Our FR garments are engineered to protect workers from electric arc flashes and flash fire hazards, and are guaranteed to be flame resistant for the useful life of the garment, provided that the care instructions are followed. Rasco believes that everyone deserves to work safe, which is why it is our mission to deliver high quality workwear at an affordable price.

# TABLE OF CONTENTS

## SAFETY STANDARDS

Safety Standards	4
------------------	---

## FABRIC GUIDE

Fabric Guide	5
--------------	---

## SHIRTS

Henley T-Shirt	6
Two Tone Henley T-Shirt	7
Uniform Shirt	8
Lightweight Work Shirts	9
Heavyweight Work Shirts	10
Two Tone Work Shirts	11
Plaid Shirts	12
Uniform Shirt with Reflective Trim	13

### Industrial Laundry

Stellarweave Uniform Shirt	14
Ultrasoft® Uniform Shirt	15
Nomex® Uniform Shirt	16
Glenguard Uniform Shirt	17

## PANTS

Classic Fit Jeans 11.5oz	18
Classic Fit Jeans 14oz	19
Relaxed Fit Jeans	21
Stretch Jeans	22
Carpenter Pants	23

### Industrial Laundry

Glenguard Uniform Pants	24
Ultrasoft® Uniform Pants	25

## COVERALLS

7.5oz and 10oz Coverall	27
-------------------------	----

### Industrial Laundry

Nomex IIIA Coverall	28
Glenguard Coverall	29
Contractor Coverall	30
Premium Coverall with Reflective Trim	31
Indura Coverall	32

## BIB OVERALLS

Bib Overall	33
-------------	----

## SWEATSHIRTS

Zip Up Hoodie and Pullover Hoodie	35
-----------------------------------	----

## OUTERWEAR

Work Vest and Shirt Jacket	36
Hooded Jacket	37
Utility Coat and Reflective Utility Coat	38

### Industrial Laundry

Bomber Jacket	39
Parka Jacket and	
Insulated Removable Hood	40

Heavy Bib Overall and Heavy Bib Overall with Reflective Trim	41
Insulated Bib Overall with Reflective Trim	42
Insulated Duck Bibs	43
Insulated Coverall	44

## HI VIS

Hi Vis Vest	
Hi Vis Long Sleeve Shirt	

### Industrial Laundry

Inherent FR Pullover Hoodie	
-----------------------------	--

Hi Vis Premium Uniform Shirt	
Rain Jacket and Rain Bib	

## HEADGEAR

FR Utility Beanie	
Winter Liner and Balaclava	
Zero Hood Winter Liner and Fleece Hat	

## WELDING ACCESSORIES

FR Welding Caps	
Performance Umbrella	

## WOMEN'S

Women's Work Shirt with Buttons	
Women's Henley and V-Neck T-shirt	
Women's Work Shirt with Snaps	
Women's Field Pants	

## NON FR

Non FR Classic Shirt	
Hi Vis Safety Vest	
Welding Caps	
Doo Rags	

## RESOURCES

Vendor Resources Page	
Customization and Embroidery	
Size Chart	
Conversion Chart	



# SAFETY STANDARDS

For more information regarding any of these products, please visit [www.rasco.com](http://www.rasco.com)

1

## CATEGORY 1 PROTECTION

Arc-rated FR garments with a required minimum ATPV of 4 cal/cm<sup>2</sup> as determined by ASTM F1959.

2

## CATEGORY 2 PROTECTION

Arc-rated FR garments with a required minimum ATPV of 8 cal/cm<sup>2</sup> as determined by ASTM F1959.

3

## CATEGORY 3 PROTECTION

Arc-rated FR garments with a required minimum ATPV of 25 cal/cm<sup>2</sup> as determined by ASTM F1959.

4

## CATEGORY 4 PROTECTION

Arc-rated FR garments with a required minimum ATPV of 40 cal/cm<sup>2</sup> as determined by ASTM F1959.



## NFPA 2112- CERTIFIED BY UL

Rasco FR offers flame resistant protective garments that are certified by Underwriters Laboratories to meet the requirements of NFPA 2112 Standard on Flame Resistant Garments for protection of Industrial Personnel Against Flash Fire, 2018 Edition. UL has certified that Rasco FR garments are compliant with NFPA 2112 after 100 industrial washes.



## ASTM F1506

ASTM F1506, 2010A Standard Performance Specification for Flame Resistant and Arc Rated Textile Materials for Wearing Apparel for Use by Electrical Workers Exposed to Momentary Electric Arc and Related Thermal Hazards requires a sample of flame resistant fabric to self extinguish with less than 2 second after flame and a less than 6 inch char length. The FR fabric must also pass these requirements after 25 washes/dry cleaning. Rasco FR garments compliant with the requirements of ASTM F1506, 2010A.



## ANSI/ISEA 107-2010

The American National Standard for High-Visibility Safety Apparel and Headwear (ANSI/SEA 107-2010) provides guidelines for the selection and use of high-visibility safety apparel to improve worker visibility during the day, in low-light conditions and at night. Certain Rasco FR garments are designed to be compliant with ANSI 107-2010.

HW

## HOME WASH

Home Wash- Laundering in a residential washing unit followed by tumble drying.

IL

## INDUSTRIAL LAUNDRY

Commonly used to remove heavy soil at a higher water temperature (160°F). pH should be held at 11.5 max.



## NFPA 70E

Requires employees to wear flame resistant clothing with an ATPV, or cal rating, equal to or greater than the determined arc hazard. Rasco FR garments are marked with an ATPV rating so that they can be worn to meet NFPA 70E standards.



## OSHA 1910.269(l)(6)(iii)

Rasco FR garments are compliant with OSHA 1910.269(l)(6)(iii).



## CSA Z96-15

Canadian Standards Association requirement for high-visibility safety apparel. This standard is to ensure a minimum level of visibility is maintained in the workplace.



## CSA Z462

This standard addresses electrical safety requirements for Canadian employees. CSA Z462 is aligned with the U.S. standard, NFPA 70E.



## CGSB 155.20

The minimum requirement for performance of workwear worn for protection against exposure to hydrocarbon flash fire.

# FABRIC GUIDE

Use our fabric guide below to help you select the optimal Rasco fabric for any situation. Our comprehensive range of options guarantee a fit for a wide variety of safety applications.



## WESTEX ULTRASOFT®

Westex UltraSoft® has become the fabric of choice. It earns a strong reputation of providing multi-hazard protection along with excellent comfort and value.



## WESTEX ALLOUT®

Designed for inclement weather conditions, Westex AllOut® fabrics are water and wind resistant.



## WESTEX DH®

Westex® DH provides outstanding breathability and optimized moisture management to keep the wearer cooler, drier and more comfortable. An excellent choice for arc flash, flash fire, and molten metal splash protection.



## WESTEX INDURA®

Westex® Indura was the first cotton fabric engineered to provide guaranteed flame resistance for the life of the garment. Best used in the metals industry and with budget-conscious contractors.



## GLENGUARD

GlenGuard FR protects against arc flash and flash fire hazards, a commonality within the electrical, oil and gas, chemical and industrial markets. GlenGuard fabrics are inherently flame resistant, offer CAT 2 protection (5.3oz and 6.4oz), have superior breathability, wick moisture, and are extremely comfortable.



## NOMEX® IIIA

DuPont™ Nomex® IIIA fiber is engineered with the goal of giving workers in the oil & gas, chemical and general manufacturing industries valuable extra seconds of protection to escape the intense heat and flames of on-the-job thermal hazards such as flash fires and pool fires. Nomex® IIIA fabric is extremely durable and helps provide the added benefit of lightweight protection, helping garments to keep workers safe and feeling cooler and drier.

## FLAMESHIELD COMFORT-FR 88% COTTON, 12% NYLON

Our Flameshield Comfort fabrics combine the comfort of cotton with the added durability of nylon. Flameshield Comfort fabrics are specially designed to guarantee flame resistance for the useful life of the garment. Rasco Flameshield Comfort is recommended for foundries, electrical utilities, and the chemical, oil, gas, and petrochemical industries.

## FR HIGH VISIBILITY RAINWEAR

Rasco now offers flame resistant high visibility rainwear that protects from the elements of wind and rain, while also providing FR protection and the additional safety during limited visibility. Rasco's High Visibility Rainwear is suitable for a wide range of industries that are exposed to such risks.

## FLAMESHIELD- 100% FR COTTON

Our Flameshield cotton fabrics offer the comfort of cotton with the benefits of flame resistant protection. Flameshield fabrics are specially designed to guarantee flame resistance for the useful life of the garment.

## STELLARWEAVE

Stellarweave is the latest innovative fabric to be created by Arvind. This 5.4oz inherent FR fabric is a blend of 50% FR viscose, 33% meta-aramid, 10% nylon, 5% para-aramid and 2% antistatic fiber. The fabric features a proprietary weave that combines excellent flow and comfort with a high AT

# SHIRTS

## HENLEY T-SHIRT

7.1oz. FR Flameshield  
100% Cotton Knit

**2** 10 cal/cm²  
CAT 2 **NEW**



Three Button Front Placket

Left Chest Patch Pocket

Rib Knit Collar & Cuff

**Sizes: S-5XL**

**6XL available in Navy, Khaki, and Black.**

**AVAILABLE IN:**



Black  
FR0101BK



Woodland Camo  
FR0101WC



Gray  
FR0101GY



Cajun Camo  
FR0101CC



Orange  
FR0101OR



Green  
FR0101GN



Red  
FR0101RD



Navy  
FR0101NV



White  
FR0101WH



Work Blue  
FR0101WB



Khaki  
FR0101KH



Gray/Black  
FR0401GY/BK



## TWO TONE HENLEY T-SHIRT

7.1oz. FR Flameshield  
100% Cotton Knit

**2** 10 cal/cm<sup>2</sup>  
CAT 2 **HW**



Baseball Style Tee

3 Button Front Placket

Raglan Sleeve

**Sizes: S-5XL**

**ALSO AVAILABLE IN:**





## UNIFORM SHIRT

7.5oz. FR Flamshield  
100% Cotton Twill

### Chambray:

6oz. FR Flameshield  
100% Cotton Twill

**2** 9.8 cal/cm<sup>2</sup>  
CAT 2 **HW**

### Chambray:

**2** 8.1 cal/cm<sup>2</sup>  
CAT 2 **HW**



Two Chest Pockets with  
Flap & Button Closure

Button Closure Cuff with  
Sleeve Vent

Placket Front with  
Button Closure

**Sizes: M-3XL Regular**  
**M-5XL Tall**



Khaki  
FR1303KH

### AVAILABLE IN:



Gray  
FR1303GY



Navy  
FR1303NV



Khaki  
FR1303KH



Chambray  
FR0915



## LIGHTWEIGHT WORK SHIRTS

7.5oz. FR Flamshield  
100% Cotton Twill

### Denim:

8.5oz FR Flameshield  
100% Cotton Denim

**2** 9.8 cal/cm<sup>2</sup>  
CAT 2 **NEW**

### Denim:

**2** 9.7 cal/cm<sup>2</sup>  
CAT 2 **NEW**



Western Style Yoke

Two Chest Pockets with Flap &  
Snap Closure

Placket Front with Snap Closure

Three Snap Cuff Closure with  
Sleeve Vent

**Sizes: M-3XL Regular**  
**M-5XL Tall**



Gray  
FR1003GY

### AVAILABLE IN:

-  Denim  
FR1021DN
-  Khaki  
FR1003KH
-  Navy  
FR1003NV
-  Work Blue  
FR1003WE
-  Gray  
FR1003GY

## HEAVYWEIGHT WORK SHIRTS

10oz. FR Flameshield  
100% Cotton Twill

### Denim:

11.5oz. FR Flameshield  
100% Cotton Twill

**2** 14 cal/cm<sup>2</sup>  
CAT 2 **HW**

Denim:  
**2** 20 cal/cm<sup>2</sup>  
CAT 2 **HW**



Western Style Yoke

Two Chest Pockets with Flap &  
Snap Closure

Placket Front with Snap Closure

Three Snap Cuff Closure with  
Sleeve Vent

**Sizes: M-3XL Regular**  
**M-5XL Tall**

Denim  
FR1022DN



### AVAILABLE IN:



Gray  
FR1004GY



Denim  
FR1022DN



Khaki  
FR0904KH

Note: Khaki style has buttons.

## TWO TONE WORK SHIRTS

### Duck/Denim:

10oz. FR Flameshield  
100% Cotton Duck  
11.5oz. FR Flameshield  
100% Cotton Denim

### Cajun Camo/Khaki:

10oz. FR Flameshield  
100% Cotton Twill  
10oz. FR Flameshield  
100% Cotton Twill

### Duck/Khaki:

10oz. FR Flameshield  
100% Cotton Duck  
10oz. FR Flameshield  
Cotton Twill

### AVAILABLE IN:



Duck/Denim  
FR1122DK/DN



Cajun Camo/  
Khaki  
FR1103CC/KH



Duck/Khaki  
FR1104DK/KH

### Duck/Denim:

**2** 13 cal/cm<sup>2</sup>  
CAT 2

HW

### Cajun Camo/Khaki:

**2** 9.8 cal/cm<sup>2</sup>  
CAT 2

HW

### Duck/Khaki:

**2** 13 cal/cm<sup>2</sup>  
CAT 2

HW



Two Chest Pockets with  
Flap & Snap Closure

Three Snap Cuff Closure with  
Sleeve Vent

Placket Front with Snap  
Closure

**Sizes: M-3XL Regular  
M-5XL Tall Only**



Duck/Denim  
FR1122DK/DN

## PLAID SHIRTS

7.7 oz. FR Flameshield  
100% Cotton Twill Plaid

**2** 10 cal/cm<sup>2</sup>  
CAT 2



Two Chest Pockets with Button Closure

Placket Front with Button Closure

Button Closure Cuff with Sleeve Vent

**Sizes: M-3XL Regular**  
**M-5XL Tall**

### AVAILABLE IN:



Red Plaid  
FR0824RD



Green Plaid  
FR0824GN



Blue Plaid  
FR0824BL

Red & Black  
FR0824RD/BK



## BUFFALO PLAID SHIRTS

7.7 oz. FR Flameshield  
100% Cotton Twill Plaid

**2** 10 cal/cm<sup>2</sup>  
CAT 2



**HW**

Two Chest Pockets with Button Closure

Placket Front with Button Closure

Button Closure Cuff with Sleeve Vent

**Sizes: M-3XL Regular**  
**M-5XL Tall**

### AVAILABLE IN:



Black & Blue  
FR0824BK/BL



Black & White  
FR0824BK/WH



Gray & White  
FR0824GY/WH



Navy & Green  
FR0824NV/GN



Red & Black  
FR0824RD/BK



## AVAILABLE IN:

Khaki  
FR1403KHNavy  
FR1403NVGray  
FR1403GYGray  
FR1403GY

## UNIFORM SHIRT WITH REFLECTIVE TRIM

7.5 oz. FR Flameshield  
100% Cotton Twill**2**10 cal/cm<sup>2</sup>  
CAT 2Two Chest Pockets with  
Flap & Button ClosurePlacket Front with Button  
ClosureButton Closure Cuff with  
Sleeve Vent2" Yellow/Silver/Yellow FR  
Industrial Wash Reflective Tr**Sizes: S-3XL Regular  
M-5XL Tall**

## STELLARWEAVE UNIFORM SHIRT

5.4oz. Stellarweave  
50% FR Viscose, 33% Meta-Aramid, 10% Nylon,  
5% Para-Aramid, 2% Antistatic Fiber

**2** 9.5 cal/cm<sup>2</sup>  
CAT 2 



Two Chest Pockets with Flap & Button Closure

Placket Front with Button Closure

Button Closure Cuff with Sleeve Vent

**Sizes: M-3XL Regular**  
**M-5XL Tall**

### AVAILABLE IN:



Khaki  
FR1329KH



Navy  
FR1329NV



Gray  
FR1329GY



Royal Blue  
FR1329RB



# ULTRASOFT® UNIFORM SHIRT

**Westex**  
**UltraSoft®**

7oz. Westex UltraSoft®

88% Cotton / 12% High Tenacity Nylon

**2** 8.7 cal/cm²  
CAT 2



Button Down Collar

Two Chest Pockets with Flap & Button Closure

Placket Front with Button Closure

Button Closure Cuff with Sleeve Vent

**Sizes: M-3XL Regular**

**M-5XL Tall**

**AVAILABLE IN:**



Khaki  
FR1305KH



Navy  
FR1305NV



Work Blue  
FR1305WB



Gray  
FR1305GY



Charcoal Gray  
FR1305CH

RASCO.COM



## NOMEX® UNIFORM SHIRT

«DUPONT»

**Nomex**

4.5oz. Nomex® IIIa

93% Nomex®, 5% Kevlar®, 2% Antistatic Fibers

1

4.6 cal/cm²  
CAT 1

IL



Button Down Collar

Two Chest Pockets with Flap & Button Closure

Placket Front with Button Closure

Button Closure Cuff with Sleeve Vent

**Sizes: S-3XL Regular**  
**M-5XL Tall**

**AVAILABLE IN:**



Royal Blue  
FR1316RB

Royal Blue  
FR1316RB







Tan  
FR1336TN

## GLENGUARD UNIFORM SHIRT



5.3oz. GlenGuard  
79% Kermel, 20% FR Modacrylic, 1% Anti-S

**2** 9.5 cal/cm<sup>2</sup>  
CAT 2



Button Down Collar

Two Chest Pockets with Flap & Button Closure

Placket Front with Button Closure

Button Closure Cuff with Sleeve Vent

**Sizes: S-3XL Regular**  
**M-5XL Tall**

### AVAILABLE IN:



Tan  
FR1336TN



Royal Blue  
FR1336RB

# PANTS

## 11.5oz CLASSIC FIT JEANS

11.5oz FR Flameshield  
100% Cotton Denim

2

20 cal/cm<sup>2</sup>  
CAT 2

HW



Change Pocket

Reinforced Back Pockets

Five Pocket Design

Sizes: Waist: 30-58" Evens

*Odd sizes for waist up to 36"*

Inseam: 30-36" Evens



11.5oz. Classic Fit  
FR4622

## 14oz CLASSIC FIT JEANS

14oz. FR Flameshield  
100% Cotton

**2** 20 cal/cm<sup>2</sup>  
CAT 2

**HW**



Change Pocket

Reinforced Back Pockets

Five Pocket Design

**Sizes: Waist: 30-58" Evens**

*Odd sizes for waist up to 36"*

**Inseam: 30-36" Evens**



14oz. Classic Fit  
**FR4623**

## RELAXED FIT JEANS

11.5oz. FR Flameshield  
100% Cotton

2

15 cal/cm<sup>2</sup>  
CAT 2

HW



Change Pocket

Reinforced Back Pockets

Five Pocket Design

**Sizes: Waist: 30-42" Evens**

*Odd sizes for waist  
up to 36"*

**Inseam: 30-36" Evens**



Relaxed Fit  
FR4722



## STRETCH JEANS

12oz. Stretch Denim  
97% Cotton, 3% Lycra

**2** 13cal/cm<sup>2</sup>  
CAT 2



Unique 8 Pocket Design

Reinforced Back Pockets

**Sizes: Waist: 30-46" Evens**  
*Odd sizes for waist  
up to 36"*

**Inseam: 30-36"**  
Evens on select sizes

### AVAILABLE IN:



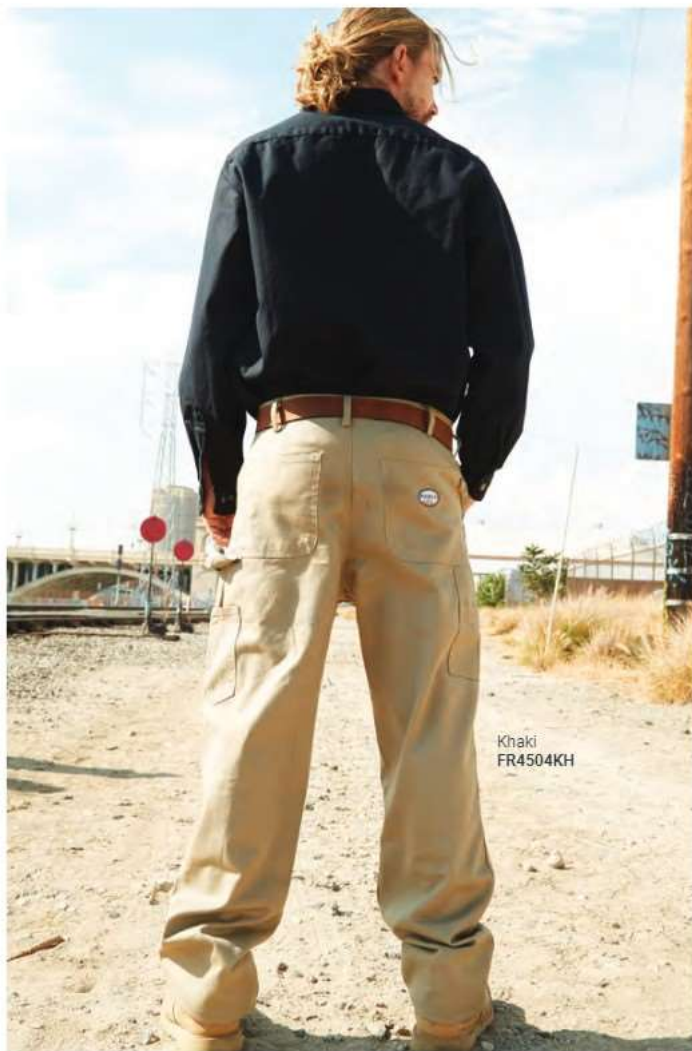
Black  
FR4212BK



Blue  
FR4212BL

RASCO.COM





## CARPENTER PANTS

10oz. FR Flameshield  
100% Cotton Duck

### Khaki:

10oz. FR Flameshield  
100% Cotton Twill

### Denim:

11.5oz. FR Flameshield  
100% Cotton Denim

**2** 13 cal/cm<sup>2</sup>  
CAT 2

HW

Khaki:  
**2** 14 cal/cm<sup>2</sup>  
CAT 2

HW

Denim:  
**2** 20 cal/cm<sup>2</sup>  
CAT 2

HW

### AVAILABLE IN:



Brown Duck  
FR4507BN



Khaki  
FR4504KH



Black Duck  
FR4507BK



Denim  
FR4522DN



Hammer Loop, Ruler, & Welding  
Rod Pockets

Triple Stitched Main Seams

Boot Cut Opening

**Sizes: Waist: 30-58" Evens**  
**Inseam: 30-36" Evens**



Navy  
FR4303NV



Khaki  
FR4303KH

## FIELD PANTS

7.5oz. FR Flameshield  
100% Cotton Twill

**2** 9.8 cal/cm<sup>2</sup>  
CAT 2

HW



Elastic Waistband

Double Stitched Main Seams

7 Pocket Design

Double Reinforced Seat & Knees

**Sizes: Waist: 30-52" Evens**  
**Inseam: 30-36" Evens**

### AVAILABLE IN:



Charcoal  
Gray  
FR4303CH



Khaki  
FR4303KH



Navy  
FR4303NV

## GLENGUARD UNIFORM PANTS



6.4oz, GlenGuard  
79% Meta-Aramid, 20% FR Modacrylic,  
1% Anti-Stat

**2** 10.1 cal/cm<sup>2</sup>  
OAT 2



Two Rear Welt Pockets

Fully Finished Waistband

Two Front Deep Slash Pockets

**Sizes: Waist: 30-52" Evens**

**Inseam: 30-36" Evens**

AVAILABLE IN:



Black  
FR4134BK



Black  
FR4134BK





Navy  
FR4133NV

# ULTRASOFT® UNIFORM PANTS

 **Westex**  
**UltraSoft®**

9oz. Westex UltraSoft®  
88% Cotton / 12% High Tenacity Nylon

**2** 12.4cal/cm²  
OAT 2



Two Rear Welt Pockets

Fully Finished Waistband

Two Front Deep Slash Pockets

**Sizes: Waist: 30-52" Evens**  
**Inseam: 30-36" Evens**

**AVAILABLE IN:**

-  Charcoal Gray  
FR4133CH
-  Khaki  
FR4133KH
-  Navy  
FR4133NV

# COVERALLS



Gray  
FR2803GY

## 7.5OZ COVERALL

7.5oz. FR Flameshield  
100% Cotton Twill

**2** 9.8 cal/cm<sup>2</sup>  
CAT 2 



Chest Pocket with Snap Closure

Pass Through Pockets

Left Pocket with Flap & Pen Slot

Two-Way Concealed Brass  
Zipper with FR Tape

Two Back Pockets & Two Front  
Pockets

**Sizes: Chest: 34-62" Evens**  
**Inseam: 30-34" Evens**

### AVAILABLE IN:



## 10OZ COVERALL

10oz. FR Flameshield  
100% Cotton Twill

**2** 14 cal/cm<sup>2</sup>  
CAT 2 



Chest Pocket with Snap Closure

Pass Through Pockets

Left Pocket with Flap & Pen Slot

Two-Way Concealed Brass Zipper  
with FR Tape

Two Back Pockets & Two Front  
Pockets

**Sizes: Chest: 34-62" Evens**  
**Inseam: 30-34" Evens**

### AVAILABLE IN:



## NOMEX IIIA COVERALL

• DUPORE •

**Nomex**

6oz. Nomex® IIIA  
93% Nomex®, 5% Kevlar®,  
2% Antistatic Fibers

1

6 cal/cm<sup>2</sup>  
CAT 1

IL



Pass Through Pockets

Front Check Pocket

Right Back Pocket

2 Way FR Taped Brass Concealed  
Zipper

**Sizes: Waist: 34-62" Evens**  
**Inseam: 30-34" Evens**

**AVAILABLE IN:**



Royal Blue  
FR2817RB

Royal Blue  
FR2817RB





# GLENGUARD COVERALL



5.3oz. GlenGuard  
74% Meta-Aramid, 20% FR Modacrylic,  
5% Para-Aramid, 1% Anti-Stat

**2** 9.5 cal/cm<sup>2</sup>  
CAT 2 **IL**



2" Mic Tabs

Front Chest Pocket with Flap & Pen Slot

Pass Through Pockets with Snap Closure

Hemmed Cuff with Snap Closure

Two Back Pockets

2 Way FR Taped Brass Concealed Zipper

12" Leg Zippers

**Sizes: Waist: 34-62" Evens**  
**Inseam: 30-34" Evens**



Royal Blue  
FR2836RB

## AVAILABLE IN:

-  Royal Blue  
FR2836RB
-  Tan  
FR2836TN
-  Black  
FR2836BK

## CONTRACTOR COVERALL

**Westex**  
**UltraSoft®**

7oz. Westex UltraSoft®  
88% Cotton / 12% High Tenacity Nylon

**2** 8.7 cal/cm²  
CAT 2

IL



Left Chest Pocket & Pen Slot

Pass Through Pockets

Right Back Pockets

Two-Way Concealed Brass-Zipper with  
FR Tape

**Sizes: Chest: 34–62" Evens**  
**Inseam: 30–34" Evens**

### AVAILABLE IN:



Navy  
FR2805NV



Khaki  
FR2805KH



Khaki  
FR2805KH



Navy  
FR2805NV

Gray  
FR3305GY



ALSO AVAILABLE IN:



Navy  
FR3305NV



Red  
FR3305RD



Royal Blue  
FR3305RB



Gray  
FR3305GY

## PREMIUM COVERALL WITH REFLECTIVE TRIM

**Westex**  
**UltraSoft®**

7oz. Westex UltraSoft®

88% Cotton / 12% High Tenacity Nylon

**2**

8.7 cal/cm<sup>2</sup>  
CAT 2



Class 1 Level FR



Mandarin Collar with Snap Closure

Pen Pocket with Slots

Two Pocket Flaps with Snap Closure

Snap on Back & Side Pockets

Cuffs with Snap Closure

Elastic Waistband

Adjustable Leg Cuff

Two-Way FR Taped Brass Concealed Zip

2" Yellow/Silver/Yellow Reflective FR  
Industrial Wash Sew-on Trim

**Sizes: 36-62" Regular**  
**42-62" Tall**



## INDURA® COVERALL

**Westex**  
**Indura®**

7oz. Westex Indura®  
100% Cotton

**2** 8.4 cal/cm²  
CAT 2



Left Chest Pocket & Pen Slot

Pass Through Pockets

Right Back Pockets

Two-Way Concealed Brass-  
Zipper with FR Tape

2" Yellow/Silver/Yellow Reflective  
FR Industrial Wash Sew-on Trim

**Sizes: Chest: 34-62" Evens**  
**Inseam: 30-34" Evens**

### AVAILABLE IN:



Navy  
FR2932NV



Khaki  
FR2932KH





RASCO.COM

# BIB OVERALLS

## BIB OVERALL

### Denim:

11.5oz. FR Flameshield  
100% Cotton Denim

### Brown Duck:

10oz. FR Flameshield  
100% Cotton Duck

### Denim:

**2** 20 cal/cm<sup>2</sup>  
CAT 2

HW

### Duck:

**2** 13 cal/cm<sup>2</sup>  
CAT 2

HW



### AVAILABLE IN:



Brown Duck  
FR2307BN



Denim  
FR2322DN

Double Chest Pockets with  
Snap Closure

Two Hammer/Tool Loops

Large Leg Zipper

Double Knee with Knee Pad  
Opening

Sizes: Waist: 30-58" Evens  
Inseam: 30-36" Evens



Denim  
FR2322DN

# SWEATSHIRTS



## ZIP UP HOODIE

10oz. FR Flameshield  
100% Cotton

**2** 22 cal/cm2 (EBT)  
CAT 2 **FRW**



Attached Hood with Draw Cord Closure

FR Taped Brass Zipper

Two Front Handwarmer Pockets

Rib Knit Cuffs & Waistband

Sizes: S-5XL

### AVAILABLE IN:



RASCO.COM



Navy  
FR2102NV



## PULLOVER HOODIE

10oz. FR Flameshield  
100% Cotton

**2** 22 cal/cm2 (EBT)  
CAT 2



Front Handwarmer Kangaroo Pocket

Rib Knit Cuffs & Waistband

Sizes: S-5XL

### AVAILABLE IN:



# OUTERWEAR

## WORK VEST

10oz. FR Flameshield  
100% Cotton Duck

### Insulation:

3oz. FR Modacrylic

### Lining:

7.5oz. FR Flameshield  
100% Cotton Twill

**3** 38 cal/cm<sup>2</sup>  
CAT 3

HW



Rib Knit Collar

Two Large Front Pockets

FR Insulated Cotton Twill Lining

Zipper Front with Wind Flap

**Sizes: S-4XL Regular**  
**M-5XL Tall**

Black Duck  
FR1707BK



### AVAILABLE IN:



Brown Duck  
FR1707BN



Black Duck  
FR1707BK

## SHIRT JACKET

10oz. Flameshield  
100% Cotton Duck

### Lining:

7.5oz. FR Flameshield  
100% Cotton Twill

**2** 21 cal/cm<sup>2</sup>  
CAT 2

HW



Two Chest Pockets

FR Cotton Twill Lining

Snap Front Closure

**Sizes: S-4XL Regular**  
**M-5XL Tall**

### AVAILABLE IN:



Brown Duck  
FR3407BN



Black Duck  
FR3407BK



Brown Duck  
FR3407BN



# HOODED JACKET

## Brown Duck and Black Duck:

10oz Flameshield  
100% Cotton Duck

Insulation:  
3oz. FR Modacrylic

Lining:  
7.5oz. FR Flameshield  
100% Cotton Twill

## Navy and Cajun Camo:

10oz Flameshield  
100% Cotton Twill

Insulation:  
3oz. FR Modacrylic

Lining:  
7.5oz. FR Flameshield  
100% Cotton Twill

## Denim:

11.5oz. Flameshield  
100% Cotton Denim

Insulation:  
3oz. FR Modacrylic

Lining:  
7.5oz. FR Flameshield  
100% Cotton Twill

Denim, Navy, and Camo:

**4** 51 cal/cm<sup>2</sup>  
CAT 4

HW

Black & Brown Duck:

**3** 38 cal/cm<sup>2</sup>  
CAT 3

HW



Removable Hood with Adjustable  
Drawstring

Two-Way Brass Zipper with FR Tape

Rib Knit Cuffs & Waistband

Two Front Pouch Pockets

Sizes: S-4XL Regular  
M-5XL Tall

## AVAILABLE IN:



Brown Duck  
FR3507BN



Cajun Camo  
FR3504CC



Black Duck  
FR3507BK



Denim  
FR3522DN



Navy  
FR3504NV



Brown Duck  
FR3507BN

## UTILITY COAT

10oz. FR Flameshield  
100% Cotton Duck

**Insulation:**  
5.7oz. FR Modacrylic

**Lining:**  
7.5oz. FR Flameshield  
100% Cotton Twill

4 42 cal/cm<sup>2</sup>  
CAT 4 **HW**



Arctic FR Insulated FR Cotton Twill  
Lining

Two Chest Pockets and Two Lower  
Pockets

Two-Way Brass Zipper with FR Tape

Interior Wind Fly and Exterior Fly  
with Snap Closure

**Sizes: S-4XL Regular  
M-5XL Tall**

Black Duck  
FR3707BK



Removable Hood with  
Adjustable Drawstrings

Black Duck  
FR3807BK



Removable Hood with  
Adjustable Drawstrings

## REFLECTIVE UTILITY COAT

10oz. Flameshield  
100% Cotton Duck

**Insulation:**  
5.7oz. FR Modacrylic

**Lining:**  
7.5oz. FR Flameshield  
100% Cotton Twill

4 42 cal/cm<sup>2</sup>  
CAT 4 **HW**



Arctic FR Insulated FR Cotton Twill  
Lining

Two Chest Pockets and Two Lower  
Pockets

Two-Way Brass Zipper with FR Tape

Interior Wind Fly and Exterior Fly  
with Snap Closure

2" Yellow/Silver/Yellow Reflective  
FR Sew-on Trim

**Sizes: S-4XL Regular  
M-5XL Tall**



Royal Blue  
FR4006RB  
(Front)



Royal Blue  
FR4006RB  
(Back)

Removable hood  
sold separately

## BOMBER JACKET

**Westex**  
**UltraSoft®**

9oz. Westex UltraSoft®  
88% Cotton / 12% High Tenacity Nylon Twill  
3.25oz. Wind & Vapour Barrier

### Insulation:

7oz. FR Modacrylic

### Lining:

7.5oz. FR Flameshield  
100% Cotton Twill

**4** 46 cal/cm<sup>2</sup>  
CAT 4 **IL**



Two-Way Concealed Brass FR Taped Zipper

Two Chest Pockets with Flaps

Two Hand Warmer Side Pockets

Adjustable Waist

2" Yellow/Silver/Yellow Reflective FR Indus  
Wash Trim

**Sizes: S-5XL Regular**  
**M-3XL Tall**



## PARKA JACKET

**Westex**  
**UltraSoft®**

9oz. Westex UltraSoft®  
88% Cotton / 12% High Tenacity  
Nylon Twill  
3.25oz. Wind & Vapour Barrier

### Insulation:

7oz. FR Modacrylic

### Lining:

7.5oz. FR Flameshield  
100% Cotton Twill

**4** 46 cal/cm²  
CAT 4



Two-Way Concealed Brass FR Taped Zipper

Two Chest Pockets with Flaps

Two Hand Warmer Side Pockets

Adjustable Waist

2" Yellow/Silver/Yellow Reflective FR Industrial Wash Trim

Rib Knit Cuffs

**Sizes: S-5XL Regular**  
**M-3XL Tall**

AVAILABLE IN:



Royal Blue  
FR3906RB



Removable  
Hood  
FR6306RB

Sold separately

## REMOVABLE HOOD

Same product details as Parka Jacket.



## HEAVY BIB OVERALL

10oz. Flameshield  
100% Cotton Duck

### Insulation:

5.7oz. FR Modacrylic

### Lining:

7.5oz. FR Flameshield  
100% Cotton Twill



42 cal/cm²  
CAT 4

HW



Multiple Tool & Utility Pockets

Ankle to Knee Covered Brass Leg  
Zippers

Arctic Insulated FR Cotton Twill Lining

**Sizes: Waist: 34-58" Evens**

**Inseam: 30-36" Evens**



Black  
FR2407BK

## HEAVY BIB OVERALL WITH REFLECTIVE TRIM

10oz. Flameshield  
100% Cotton Duck

### Insulation:

5.7oz. FR Modacrylic

### Lining:

7.5oz. FR Flameshield  
100% Cotton Twill



42 cal/cm²  
CAT 4

HW



Two Hammer Loops with Reinforced  
Back Pockets

Front Pockets with Snap Closure

Ankle to Knee Brass Zippers with FR  
Rape

2" Yellow/Silver/Yellow FR Reflective  
Trim



Black  
FR2507BK

**Sizes: Waist: 34-58" Evens**

**Inseam: 30-36" Evens**



Royal Blue  
FR2706RB

## INSULATED BIB OVERALL WITH REFLECTIVE TRIM

**Westex**  
**UltraSoft®**

9oz. Westex UltraSoft®  
88% Cotton / 12% High Tenacity  
Nylon Twill  
3.25oz. Wind & Vapour Barrier

### Insulation:

7oz. FR Modacrylic

### Lining:

7.5oz. FR Flameshield  
100% Cotton Twill

4 46 cal/cm²  
CAT 4

IL



Heavy Cotton Elastic Shoulder Straps

Two Front Pockets

Two Back Pockets

Two-Way Brass FR Taped Front Zipper

Leg Zipper

2" Yellow/Silver/Yellow Reflective FR  
Industrial Wash Sew-on Trim

**Sizes: S-XL Regular**  
**M-3XL Tall**

### AVAILABLE IN:



Royal Blue  
FR2706RB



Brown Duck  
FR2607BN

## INSULATED DUCK BIBS

10oz. FR Flameshield  
100% Cotton Duck

### Insulation:

3oz. FR Modacrylic

### Lining:

7.5oz. FR Flameshield  
100% Navy Twill

Brown Duck:

**3** 38 cal/cm<sup>2</sup>  
CAT 3

HW

Navy Twill:

**4** 51 cal/cm<sup>2</sup>  
CAT 4

HW



Double Chest Pockets with Snap  
Closures

Double Knee with Knee Pad Opening

Two Hammer/Tool Loops

Large Leg Zipper

**Sizes: Waist: 34-58" Evens**  
**Inseam: 30-36" Evens**

### AVAILABLE IN:



Brown Duck  
FR2607BN



Navy Twill  
FR2607NV



Navy Twill  
FR2607NV

## INSULATED COVERALL

10oz. FR Flameshield  
100% Cotton Twill

### Insulation:

3oz. FR Modacrylic

### Lining:

7.5oz. FR Flameshield  
100% Cotton Twill



51 cal/cm²  
CAT 4

HW



Left Pocket with Flap & Pen Slot

Pass Through Pockets

Two-Way FR Taped Brass  
Concealed Zipper

**Sizes: Chest: 34-62" Evens**  
**Inseam: 30-34" Evens**



Navy  
FR6404NV



# HI VIS

Hi Vis Yellow  
FR1603YH  
(Front)

\*With Pockets



Hi Vis Yellow  
FR1503YH  
(Front)

\*Without Pockets



## HI VIS VEST

7.5oz. FR Flameshield  
100% Cotton Twill

**2** 9.8 cal/cm<sup>2</sup>  
CAT 2



Front Zipper Closure

360 Degree Visibility

2" Silver Reflective FR Trim

**Sizes: S-5XL**



(Back)



(Back)

Hi Vis Orange  
FR03100H  
(Front)



## HI VIS LONG SLEEVE SHIRT

**Westex**  
**UltraSoft®**

6oz. Westex UltraSoft® Knit  
88% Cotton / 12% High Tenacity  
Nylon Twill

**2**

11 cal/cm<sup>2</sup>  
CAT 2

**HW**



Class 2 Level 2



Inside Chest Pocket



Rib Knit Collar & Cuff



2" Silver Reflective FR Segmented  
Heat Applied Trim

**Sizes: S-3XL**

Hi Vis Orange  
FR03100H  
(Back)



## INHERENT FR PULLOVER HOODIE

10.3oz. FR Fleece Knit  
40% Cotton / 35% Modacrylic /  
15% FR Viscose / 8% Para-Aramid /  
2% Anti Static Fiber

**3** 25 cal/cm<sup>2</sup> (EBT)  
CAT 3

IL



Class 2 Level 2



Adjustable Hood with Drawstrings

2" Silver Reflective FR Industrial  
Wash Trim

Front Handwarmer Kangaroo Pocket

Rib Knit Cuffs

**Sizes: S-3XL**

Hi Vis Orange  
FR22190H



## RAIN JACKET

11.5oz. PU Coated  
100% FR Cotton Knit

**2** 9.4 cal/cm<sup>2</sup>  
CAT 2 **HW**



Class 3, Type P or R

Two Pockets with Flaps

Non-conductive Durable Hardware

Vented Back with D Ring Access

360 Degree Visibility

**Sizes: S-6XL**

Hi Vis Yellow  
FR5926YH



## RAIN BIB

11.5oz. PU Coated  
100% FR Cotton Knit

**2** 9.4 cal/cm<sup>2</sup>  
CAT 2 **HW**



Class E\*

ASTM F2733

Elasticized Shoulder Straps

Non-conductive Durable Hardware

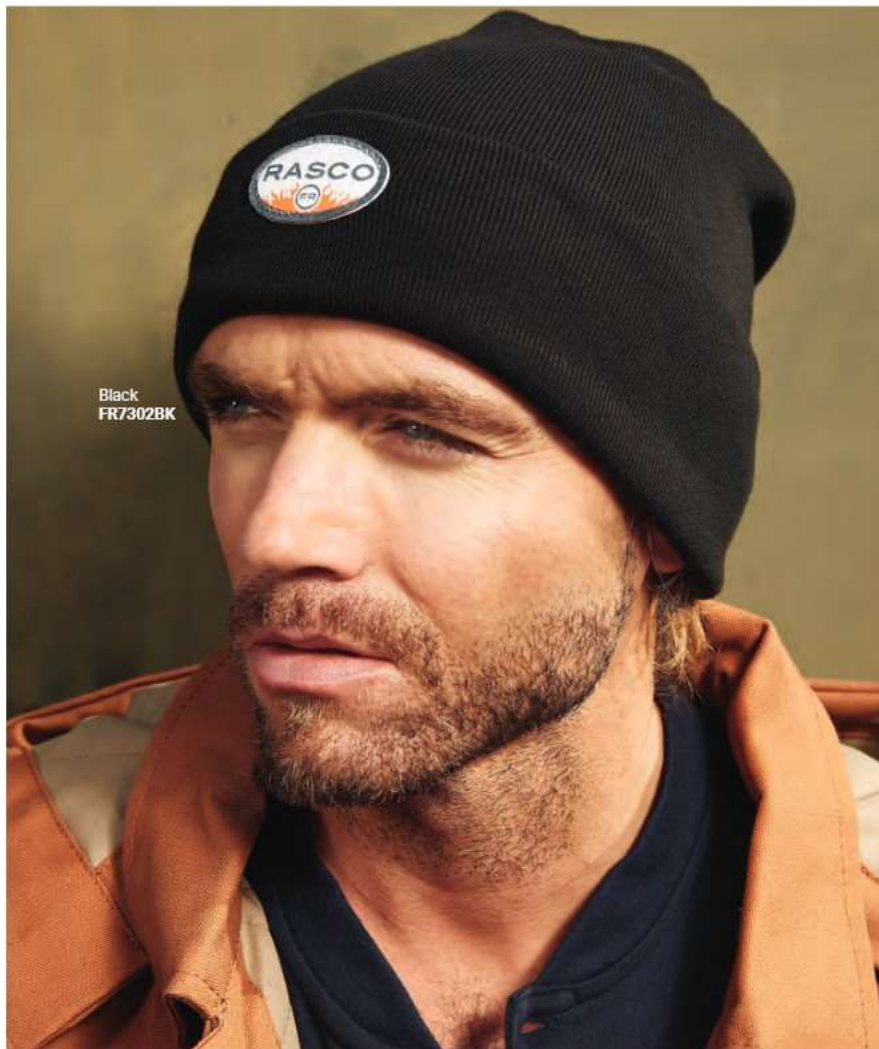
**Sizes: S-6XL**

\*When worn with FR5926 meets class 3, Type P or R



Hi Vis Yellow  
FR6126YH





Black  
FR7302BK

RASCO.COM

# HEAD GEAR

## FR UTILITY BEANIE

13.3oz.

60% Modacrylic

38% Cotton

2% Anti-Static

2

22 cal/cm<sup>2</sup>

CAT 2

HW

Sizes: One Size

AVAILABLE IN:



Navy  
NFH31



Black  
BFH32



Navy  
FR7302N

## WINTER LINER

10oz. FR Flameshield  
100% Cotton Knit

**2** 17 cal/cm<sup>2</sup>  
CAT 2

HW



Sizes: One Size

AVAILABLE IN:



Gray  
WL2004-G



Navy  
WL2004-N



Black  
WL2004-B



AVAILABLE IN:



Navy  
NBC21



Black  
BBC22

## BALACLAVA

11oz. FR Flameshield Knit  
60% Modacrylic / 38% Cotton  
2% Spandex

**2** 11 cal/cm<sup>2</sup>  
CAT 2

HW



Sizes: One Size

## ZERO HOOD WINTER LINER

10oz. FR Flameshield  
100% Cotton Knit

**2** 17 cal/cm<sup>2</sup>  
CAT 2

HW



Sizes: One Size

AVAILABLE IN:



Gray  
WL2003-G



Navy  
WL2003-N



Navy  
WL2003-N



Black  
BFH32

## FLEECE HAT

### Main Fabric:

12 oz. Flameshield Fleece  
60% Modacrylic  
38% Cotton  
2% Anti-static

### Trim Fabric:

11oz. Flameshield Fleece  
60% Modacrylic  
38% Cotton  
2% Anti-static

**2** EBT50 16 cal/cm<sup>2</sup>  
CAT 2

HW



Sizes: One Size

AVAILABLE IN:



Navy  
NFH31



B  
B

# WELDING ACCESSORIES

## FR WELDING CAPS

7.5oz. FR Flameshield  
100% Cotton

2

9.8 cal/cm<sup>2</sup>  
CAT 2

Sizes: Please see size chart on page 65.

### AVAILABLE IN:



Charcoal  
Gray  
FR7403CH



Khaki  
FR7403KH

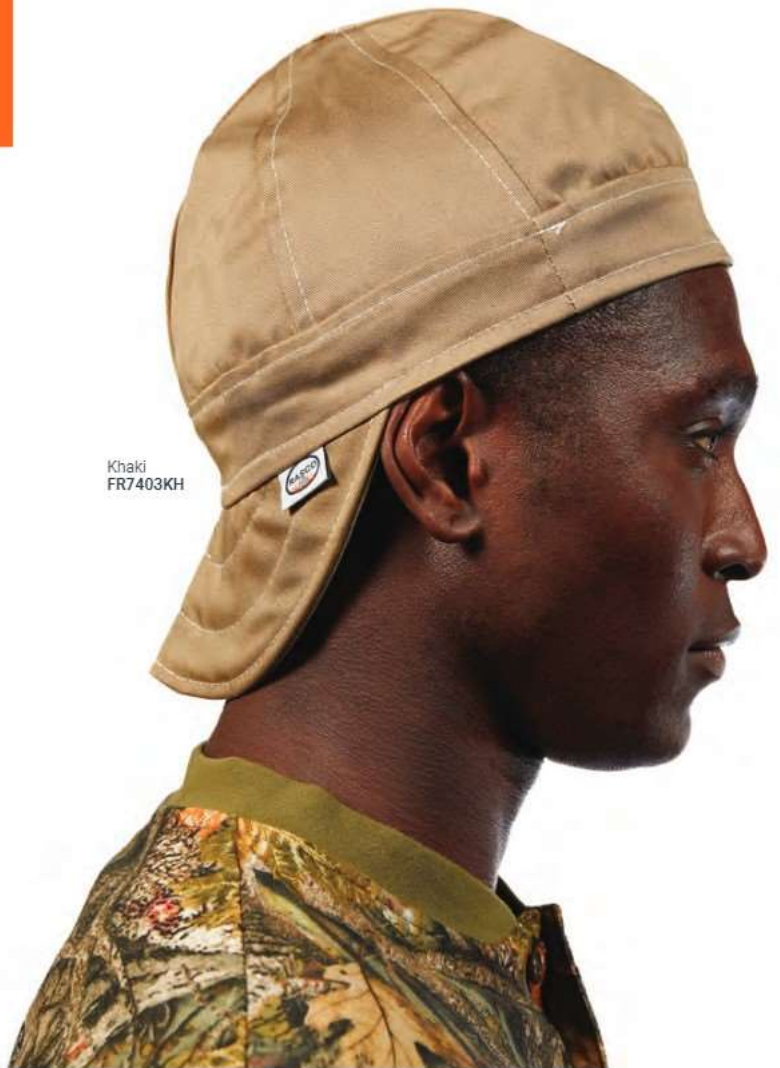


Orange  
FR7403OR



Navy  
FR7403NV

Khaki  
FR7403KH







Orange  
FR77270R

Tripod  
FR7828  
*\*Sold separately*

## PERFORMANCE UMBRELLA

7ft. heavy duty FR Ripstop Vinyl

Fiberglass Pole, Spokes and Tilt



Anchor  
FR7928  
*\*Sold separately*

# WOMEN'S

## WOMEN'S WORK SHIRT WITH BUTTONS

7.5oz. FR Flameshield  
100% Cotton Twill

**2** 9.8 cal/cm<sup>2</sup>  
CAT 2

HW



Western Style Yoke

Tapered Body Design

Button Closure Cuff with Sleeve Vent

Two Designer Chest Pockets with Flap & Button Closure

Front Button Closure

**Sizes: S-3XL**

**AVAILABLE IN:**



Sage Green  
FR4903SG



Plum  
FR4903PL



Plum  
FR4903PL



Navy  
FR5101NV

## WOMEN'S HENLEY

7.1oz. FR Flameshield  
100% Cotton Knit

**2** 10 cal/cm<sup>2</sup>  
CAT 2

HW



Three Button Placket

Sizes: S-3XL

## WOMEN'S V-NECK T-SHIRT

7.1oz. FR Flameshield  
100% Cotton Knit

**2** 10 cal/cm<sup>2</sup>  
CAT 2



Rib Knit Collar V-Neck

Raglan Sleeves

Sizes: S-3XL



Woodland Camo  
Khaki  
FR5201WC/I



## WOMEN'S WORK SHIRT WITH SNAPS

### Denim:

8.5oz. FR Flameshield  
100% Cotton Denim

### Blue Plaid:

7.7oz. FR Flameshield  
100% Cotton Twill Plaid

### Khaki & Work Blue:

7.5oz. FR Flameshield  
100% Cotton Twill

### Denim:

**2** 9.2 cal/cm<sup>2</sup>  
CAT 2

### Blue Plaid:

**2** 10 cal/cm<sup>2</sup>  
CAT 2

### Khaki & Work Blue:

**2** 9.8 cal/cm<sup>2</sup>  
CAT 2



Western Style Yoke

Tapered Body Design

Snap Closure Cuff with Sleeve Vent

Two Designer Chest Pockets with  
Flap & Button Closure

Front Button Closure

Sizes: S-3XL

AVAILABLE IN:



Khaki  
FR5003KH



Blue Plaid  
FR5024BL



Work Blue  
FR5003WB



Denim  
FR5021DN



## WOMEN'S FIELD PANT

7.5oz. FR Flameshield  
100% Cotton

**2** 9.8 cal/cm<sup>2</sup>  
CAT 2

HW



7 Pocket Design

Elastic Waistband

Double Stitched Main Seams

Double Reinforced Seat & Knees

**Sizes: 0-18 Evens**



Charcoal Gray  
FR8303CH

# NON FR

## NON FR CLASSIC SHIRT

Non FR Classic Shirt:  
10oz. 100% Cotton Twill

**Denim:**  
11.5oz. 100% Cotton Twill

**Non FR Two Tone Classic Shirt:**  
Khaki/Brown Duck & Khaki/Black Duck:  
10oz. 100% Cotton Duck

**Khaki/Denim:**  
11.5oz. 100% Cotton Denim

**Khaki/Camo:**  
7.5oz. 100% Cotton Twill

Two Chest Pockets with Flap &  
Snap Closure

Western Style Yolk

**Sizes: M-3XL Regular**  
**M-5XL Long**

CLASSIC AVAILABLE IN:



Denim  
D1150



Khaki  
K950



Denim  
D1150

# HI VIS SAFETY VESTS

100% Polyester



ID Pocket with Pen Holder

3 Storage Pockets

**Hi Vis Orange Vest has:** 4" Orange/Silver/Orange Reflective Trim

**Hi Vis Yellow, Navy & Black Vests have:** 4" Yellow/Silver/Yellow Reflective Trim

**Sizes:** S-4XL

## HI VIS VEST AVAILABLE IN:



Black  
HV001BK



Yellow  
HV001YH



Navy  
HV001NV



Orange  
HV001OH

## HI VIS ZIP FRONT VERSIONS AVAILABLE IN:



Orange  
HV005OH



Yellow  
HV005YH

RASCO.COM



## WELDING CAPS

100% Cotton

Sizes: Please see sizing chart on page 73.

### AVAILABLE IN:



Blue Lightning  
BLNWC166



Green Lightning  
GLNWC170



Crawfish  
CRFWC165



Yellow Lightning  
YLNWC167



Camo Skulls  
CSKWC164



Red Lightning  
RLNWC168



American Eagle  
RSEWC163



Purple Lightning  
PLNWC169



Dragons  
DRGWC162



Hawaiian  
RHWWC167



Solid White  
WWC1015



Working Welder  
WW001



Solid Black  
BWC1016



Solid Black  
BWC1016



Solid White  
WWC1015





American Flag  
USADR440



American Eagle  
RSED442



Crawfish  
CRFDR444



Dragons  
DRGDR441



Blue Lightning  
BLNDR445



## DOO RAGS

100% Cotton

Sweat Absorbent Headband

Tie Closure

Sizes: One Size Fits All

# VENDOR RESOURCES

## **PURCHASING RASCO**

Rasco cannot be purchased directly by end users. For assistance locating an authorized retailer of Rasco, please visit our website at [rasco.com/where-to-buy](http://rasco.com/where-to-buy)

## **AUTHORIZED RASCO DISTRIBUTOR**

Interested in becoming an authorized Rasco distributor? Please contact us at [info@rasco.com](mailto:info@rasco.com) to begin your application.

## **PLACING ORDERS**

Authorized Distributors may place orders by emailing Purchase Orders to [orders@rasco.com](mailto:orders@rasco.com) or through our online ordering portal. Authorized Distributors can e-mail [info@rasco.com](mailto:info@rasco.com) to set up an account on our online ordering portal.

## **PRODUCT RETURNS**

For the latest information regarding Rasco product returns, please visit our website at [www.rasco.com/return-policy](http://www.rasco.com/return-policy). For questions or requests regarding a specific product return, please contact [returns@rasco.com](mailto:returns@rasco.com).

## **QUESTIONS ABOUT PENDING ORDERS**

For questions about your pending orders, please e-mail [support@rasco.com](mailto:support@rasco.com).

## **BILLING QUESTIONS**

For questions about invoices, credit memos or to request an account statement, please e-mail [billing@rasco.com](mailto:billing@rasco.com).

## **GARMENT CARE**

Please review the care label attached to your Rasco garment so that you can properly care for your garment.

## **RETAILERS SWAG AND SUPPORT**

Rasco has hanging signs, rack signs, stickers, window decals, and banners available for authorized Rasco retailers. Contact us to have a sign or banner sent to you with your next order. Please e-mail [info@rasco.com](mailto:info@rasco.com).

## **RASCO CONTACT INFORMATION:**

### **Warehouse & Office:**

1707 N. Flannery Rd.  
Baton Rouge, LA 70815  
**T:** 225.273.3163 or 800.472.7265  
**F:** 888.252.1088 or 225.273.3176  
[orders@rasco.com](mailto:orders@rasco.com)

### **Santa Monica Office:**

**T:** 424.231.7172

### **Canada Warehouse & Office:**

1372 Mountain Ave.  
Winnipeg, Manitoba R2X 3A3  
**T:** 204.697.1777 or 844.997.2726  
[sales.canada@rasco.com](mailto:sales.canada@rasco.com)

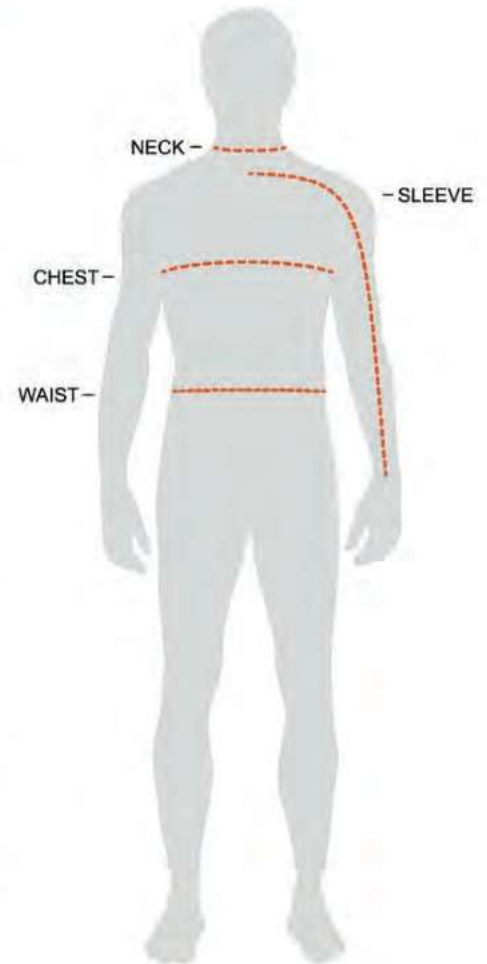
# CUSTOMIZATION & EMBROIDERY



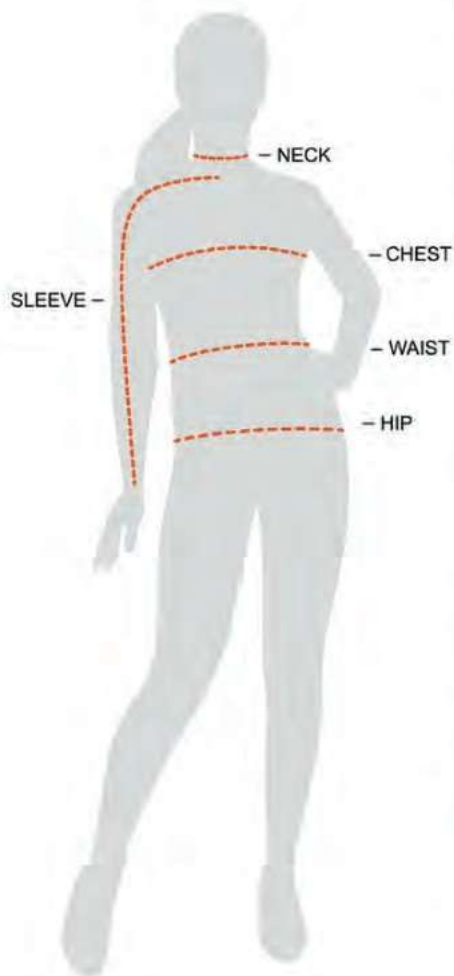
Through our customization program we can create uniforms and apparel to suit your needs including the modification of style, color & sizing. Prices vary according to the design and the number of garments ordered. Contact 1-800-472-7265 for more information.

Rasco clothing can be customized by adding a logo, name or any other desired design. Custom reflective trim is available in several color and width options that can be affixed to Rasco garments.

MEN'S		S	M	L	XL	2XL	3XL	4XL	5XL								
SHIRTS	CHEST	44	47	51	55	59	59	66	70								
	NECK	14.5	15.5	16.5	17.5	18.5	19	20	21								
	SLEEVE	23	24	25	26	26	27	27	28								
JACKETS	CHEST	49	51	53.5	57.5	61.5	65.5	69.3	71								
	NECK	15.5	16.5	17.5	18.5	19.5	20	21	22								
	SLEEVE (Regular)	24	24	24	24	25.5	25.5	25.5	25.5								
	SLEEVE (Long)	25	26	27	27	28	29	29	29								
	SHOULDER	19	20.5	22	23	24	25	26.5	27								
	BACK (Regular)	26.5	28	28.5	29	30	25.5	30	30.5								
	BACK (Long)	27.5	29	29.5	30	31	31	31.5	31.5								
COATS	CHEST	49	51	53.5	57.5	61.5	65.5	69.5	71								
	NECK	15.5	16.5	17.5	18.5	19.5	20	21	22								
	SLEEVE (Regular)	24	24	24	24	25.5	25.5	25.5	25.5								
	SLEEVE (Long)	25	25	26.5	26.5	27.5	27.5	28	28								
	SHOULDER	19	20	21	22	23	24.5	25.5	26.5								
	BACK (Regular)	29	30	31.5	31.5	32	33	34	34								
	BACK (Long)	30	31	32.5	32.5	33	34	35	35								
COVERALL**	Rasco Size	34	36	38	40	42	44	46	48	50	52	54	56	58	60	62	-
	CHEST	40	41	42	43	46	48	50	52	55	57	59	61	63	65	67	-
	WAIST	34	35	36	37	40	42	45	47	50	53	55	58	59	61	63	-
LAB COAT	CHEST	45.5	48.5	51.5	55	58	59.5	63.5	66.5								
	NECK	15.7	16.5	17.3	18.1	18.9	19.7	20.5	21.3								
	SLEEVE	24	24	24	24	25.5	25.5	25.5	25.5								







MEN'S PANTS* (Waist)		30	31	32	33	34	35	36	37	38	40	42	44	46	48	50	52	54	56	58
BIB*	ALPHA	S		M		L		XL		2XL		3XL		-	-	-	-	-	-	-
	WAIST	30	32	34	36	38	40	42	44	46	48	50	52	-	-	-	-	-	-	-

WOMEN'S		S		M		L		XL		XXL		3XL	
PANTS	SIZE	0	1	3	5	7	9	11	13	15	17	-	-
	WAIST	30	31	32	33	34	35	36	38	40	42	-	-
	HIP	35.5	37	38	39	40.5	41.5	42.5	43.5	44.5	45	-	-
SHIRTS	CHEST	37		40		42.5		44.5		47		47.5	
	NECK	14.5		15.5		16.5		17.5		18.5		19	
	SLEEVE	24		25		26		27		27		28	

CAPS	Rasco Size	6	6 <sup>1/8</sup>	6 <sup>1/4</sup>	6 <sup>3/8</sup>	6 <sup>1/2</sup>	6 <sup>5/8</sup>	6 <sup>3/4</sup>	6 <sup>7/8</sup>	7	7 <sup>1/8</sup>	7 <sup>1/4</sup>	7 <sup>3/8</sup>	7 <sup>1/2</sup>	7 <sup>5/8</sup>	7 <sup>3/4</sup>	7 <sup>7/8</sup>	8	8 <sup>1/8</sup>
	CIRCUMFERENCE IN INCHES	18 <sup>7/8</sup>	19 <sup>1/4</sup>	19 <sup>5/8</sup>	20 <sup>1/2</sup>	20 <sup>3/4</sup>	20 <sup>7/8</sup>	21 <sup>1/8</sup>	21 <sup>1/4</sup>	21 <sup>3/8</sup>	22 <sup>1/8</sup>	22 <sup>1/4</sup>	23	23 <sup>1/8</sup>	23 <sup>3/8</sup>	24 <sup>1/4</sup>	24 <sup>3/8</sup>	25 <sup>1/8</sup>	25 <sup>3/4</sup>

### Questions about sizing? Call 1-800-472-7265

**Neck:** Measure around the base of the neck where a collared shirt would fit. Measure a collar band on a shirt that fits you well. Lay the collar band flat. Measure from beginning of the button hole to the center of the button.

**Chest:** Measure well up under the arm, across the shoulder blades and over the fullest part of the chest. Hold the tape firmly, but not tightly. Be sure the tape is level and straight across the back while in a natural stance.

**Sleeve:** Bend the elbow slightly. Start at the center of the back of the neck and measure across the shoulder to the elbow and down to the wrist bone.

**Waist:** Remove the belt. Measure over shirt (not over pants) at the position pants are normally worn. Hold the tape firmly, but not tightly.

**Hips:** Stand with heels together. Measure around the fullest part of the hips, holding tape measure level.

Old	New
BDSJ2323	FR3407BN
BDV5501	FR1707BN
BFIQ3000	FR6404NV
BFR750	FR2803NV
BJFQ2206	FR3507BN
BKFQ2211	FR3507BK
BLHB2427	FR2407BK
BLHB2427-S	FR2507BK
BLHC2426	FR3707BK
BLHC2426-S	FR3807BK
BLSJ2324	FR3407BK
BLV5502	FR1707BK
BOBF1217	FR2307BN
BOBQ4000	FR2607BN
BODF1219	FR2322DN
BONQ4001	FR2607NV
BTF457	FR0101BK
CBF1215	FR4507BN
CBFR703	FR0915
CBK1217	FR4507BK
CFR1202	FR4504KH
CJFQ2209	FR3504CC
CKF463	FR0401WC/KH
CMF458	FR0101CC
CNF462	FR0101WC
DFR1210	FR1022DN
DFR751	FR1021DN
DJFQ2208	FR3522DN
FDD2000	FR1122DK/DN
FKC2004	FR1104CC/KH
FKD2001	FR1104DK/KH
FR750	FR1003KH
FRB1201	FR0904KH
FRB757	FR1303KH
FRC1212	FR4522DN
GBT464	FR0401GY/BK

Old	New
GFB750	FR1303GY
GFF752	FR2803GY
GFR1014	FR1004GY
GPP2015	FR4303CH
GPS764	FR0824GY/WH
GR754	FR1003GY
GRF460	FR0101GN
GTF454	FR0101GY
HYVS770	FR1503YH
HYVS771	FR1603YH
JFR1210	FR4623
JFR1211	FR4622
KFR751	FR2803KH
KNT465	FR0401KH/NV
KPP2013	FR4303KH
KTF452	FR0101KH
NFB761	FR1303NV
NGT466	FR0401NV/GY
NJFQ2210	FR3504NV
NPP2014	FR4303NV
NR755	FR1003NV
NTF453	FR0101NV
OTF455	FR0101OR
PBB756	FR0824BK/BL
PBR763	FR0824RD/BK
PBW766	FR0824BK/WH
PLB762	FR0824BL
PLG755	FR0824GN
PLR756	FR0824RD
PNG767	FR0824NV/GN
RBY1002	FR6126YH
RJFR1150	FR4722
RJY1000	FR5926YH
RTF459	FR0101RD
W-CKF463	FR5201WC/KH
W-DFR751	FR5021DN

Old	New
NR755	FR1003NV
NTF453	FR0101NV
OTF455	FR0101OR
PBB756	FR0824BK/BL
PBR763	FR0824RD/BK
PBW766	FR0824BK/WH
PLB762	FR0824BL
PLG755	FR0824GN
PLR756	FR0824RD
PNG767	FR0824NV/GN
RBY1002	FR6126YH
RJFR1150	FR4722
RJY1000	FR5926YH
RTF459	FR0101RD
W-CKF463	FR5201WC/KH
W-DFR751	FR5021DN
W-FR750	FR5003KH
W-NTF453	FR5101NV
W-PK759	FR4903PL
W-PLB762	FR5024BL
W-SG758	FR4903SG
W-WR753	FR5003WB
WBF461	FR0101WB
WR753	FR1003WB
WTF456	FR0101WH



RASCO.COM



**FIRST IN SAFETY**

RASCO.COM

Follow us @rascofr

