

**2023**  
USA/CANADA



**BLÅKLÄDER®**  
WORKWEAR



You can't make things better if you just accept them as they are. A lot of times, you need to say NO to create real change for everyone. For every YES, there are a thousand NOs doing the hard work, and we at Blåkläder are doing just that for you. We try, fail and learn. We make the unpopular decisions and the hard choices. We say no – so you don't have to.

We stand against the weather, the bad days, the bad innovations, the dirt, the crap. We say no to fast money, hasty decisions, temporary solutions and patchy quick fixes. For us, it's the only long-term and sustainable way forward. We say no to a lot of things so you can say yes later.

It's not one thing that makes people buy our workwear; it's the sum of everything. Our never-ending and laser-like focus on quality, functionality, design and sustainability is built into every part of our company's value chain. Our commitment excellence is solid and unbreakable, it makes us reliable like no other. If there is a better way of doing things, we want people to trust us to find it.

We believe in being the best you can be, not the best you once were. We are relentlessly dedicated to our cause, which means we cannot always play by the book. We are rebels with a cause, unafraid to go against the flow and make our own rules.

Welcome to Blåkläder Workwear!



# WE SAY NO

---

# TO BAD WORKWEAR



# PAGE INDEX

FLAME RESISTANT .....	PAGE 10–15
HI-VIS .....	PAGE 16–27
RAIN .....	PAGE 28–29
PANTS .....	PAGE 30–35
PAINTER.....	PAGE 36–39
VEST/SHORTS .....	PAGE 40–41
WIND/WATER/COLD .....	PAGE 42–45
SHIRTS/SWEATSHIRTS .....	PAGE 46–49
WOMEN'S .....	PAGE 50–53
BASE LAYER .....	PAGE 54–55
ACCESSORIES .....	PAGE 56–61
SIZE OPTIONS .....	PAGE 62
TERMS & CONDITIONS.....	PAGE 63

## HOW TO READ THE PRODUCT NUMBER

Our product number has a total of **12 digits**. Every **4-digit** sequence represents a specified value.  
**To order a product you need to know all 12 digits** to get the right material and color. See below.

**1636 1550 8900**

**First 4** digits are the product/  
model number.

**1636 1550 8900**

**Second 4** digits are material.

**1636 1550 8900**

**Last 4** digits are color.

## SYMBOL GUIDE

Blaklader workwear is made with specific functionalities to make your job easier. Look out for the symbols below to help you figure out exactly how each garment is built for work.



UTILITY  
POCKETS



KNEEPAD  
POCKETS



FLAME  
RESISTANT



WATER-  
PROOF



ANSI/ISEA  
HI VIS



CSA Z96-15  
HI VIS



ANTI-  
ODOR



SPF-40





# BECAUSE TOMORROW **MATTERS**

Sustainability has always been part of our story. Since Blåkläder began in 1959, we've been making sustainable workwear. The awareness of sustainability issues has increased over time and it now permeates every aspect of our global organization.

We believe in sustainability. **Because tomorrow matters.**



READ FULL  
REPORT HERE



## EXPERIENCE THE DIFFERENCE

The Blåkläder experience is all about delivering solutions that are comfortable, flexible and easy to use without compromising on design and looks. The four cornerstones of our production line are functionality, quality, design and sustainability. We never compromise on these. In fact, it's the base for our entire brand, and you can always rely on us to maintain the highest standards for all product features.

## QUALITY AND FUNCTION

We advocate that style and comfort are essential factors in making great workwear. With Blåkläder, you get all of that, and the synergy is amazing. We choose the most durable fabrics and components. Our clothes are equipped with triple seams, Cordura® reinforcement, and double-layer fabrics in exposed areas. We even have a lifetime warranty on our seams.

## GOODBYE ORDINARY

We believe that having the right tool for the job is incredibly important. This is widely accepted in the trades, but often overlooked when it comes to workwear. Tough jobs call for tough tools, so don't settle.

## 1622 - THE GENUINE REBEL

A durable, 4-way stretch craftsman pant with tons of functionality! These pants are BUILT FOR WORK with removable utility pockets, foam kneepad inserts, Stretch fabric and Cordura® reinforcement. This is the right tool for any job







## OUR SERVICE

The visibility of a brand is more important than ever. Our inhouse branding service enables you to give your workwear a unique and personal profile. Our team will work with you to develop selected items and designs for you and your team. Then easily order branded garments through your portal anytime a team member needs new gear.

### HEAT TRANSFER

A cost-effective way to make your company logo visible. Heat transfer is easy to apply and works on waterproof clothing and smaller pockets.



# BLÅKLÄDER<sup>®</sup>

WORKWEAR

BLÅKLÄDER<sup>®</sup>

BLÅKLÄDER<sup>®</sup>



SCAN TO  
LEARN MORE



# BUCKLE UP AND ENJOY THE RIDE

WE'LL KEEP THE CAR RUNNING, YOU DRIVE.

When you trust your workwear to Blaklader, you should always feel confident that you have a fast, efficient and resilient team at your side. Today we're proud to manage a team that delivers high-tech solutions, smart logistics, smooth and efficient distribution, as well as rigorous control of our manufacturing units.



PRODUCT  
DEVELOPMENT



PURCHASING  
& SOURCING



WAREHOUSE  
& LOGISTICS



PRODUCTION



SALES &  
MARKETING



DISTRIBUTORS



SUPPORT



Combining an extremely competent sales force and having our own production helps us control every step in our value chain.





# LOCAL SUPPLY **GLOBAL SUPPORT**

As a global brand we understand the struggles of lead times and shipping logistics. We've built our supply chain from the ground up so we can keep your gear readily available. With warehouses in the U.S. and Canada, we are able to fill most orders within days so you can rest easy knowing your favorite work gear isn't far away.





# 01

# FLAME RESISTANT

A full-page photograph of a man, Jordan Bielfield, standing on a metal staircase. He is wearing a white hard hat with 'LiftPower' on it, safety glasses, a dark blue long-sleeved shirt, dark blue pants, and a complex orange and black safety harness. He is also wearing green and black gloves. He is looking directly at the camera. Behind him is a large, arched opening in a light-colored wall, possibly a tunnel or a large door. The staircase has metal railings.

"AT UPTOWER, WE HAVE AN **UNMATCHED FOCUS ON PROVIDING SAFE HIGH-QUALITY** SERVICE AND TRAINING. TO ACCOMPLISH THIS TASK, WE **CHOOSE THE HIGHEST QUALITY SAFETY GEAR AND WORKWEAR.** OUR CHOICE IS BLAKLADER. THEIR GEAR IS COMFORTABLE, IT'S DURABLE, IT LOOKS PROFESSIONAL, AND **OUR TECHNICIANS LOVE TO WEAR IT!**"

- Jordan Bielfield  
OWNER at UPTOWER





# THE FLAME RESISTANT COLLECTION FROM BLÅKLÄDER

Your safety is the most important thing on the jobsite.

Our garments are built around this mindset, but unlike many manufacturers, we strive for more!

We design our safety gear to be more comfortable, more functional, and more durable than any other safety workwear on the market. See the Blåkläder difference for yourself!

Established in 1959, our company has been challenging the status quo in workwear for over 60 years! We've worked with some of the largest construction companies in the world and we've changed the way they work. Are you ready to see what it's all about?

## FLAME RESISTANT PROTECTIVE GARMENTS FOR HIGH-RISK WORK

SOLAR  
POWER

WIND  
POWER

CO-OP/  
UTILITIES

NFPA 70E

### NFPA 70E

NFPA 70E, titled Standard for Electrical Safety in the Workplace, is a standard of the National Fire Protection Association (NFPA). The document covers electrical safety requirements for employees. The NFPA is best known for its sponsorship of the National Electrical Code (NFPA 70).

### ASTM F1506

ASTM F1506 is the Standard Performance Specification for Flame Resistant and Arc Rated Textile Materials for Wearing Apparel for Use by Electrical Workers Exposed to Momentary Electric Arc and Related Thermal Hazards.

### NFPA 2112

NFPA 2112, entitled Standard on Flame-resistant Garments for Protection of Industrial Personnel Against Flash Fire, is a national consensus standard which sets the minimum performance requirements for garments which are to be worn by workers who may face the hazard risk of exposure to a flash fire in their workplace.





## 1636

### FR PANTS

**1550** 88% cotton, 12% polyamide, twill flame resistant 10 oz, Arc Rating 11,0 cal/cm²

**8900** Navy blue

30:28-48:30

The 1636 FR Pants are built for work. Top of the line Blåkläder functionality and comfort with even more protection. Our FR gear is tested and compliant with NFPA 70E for your protection and CAT 2 compliant, with an 11 calories/cm² arc rating.

**CERTIFICATION:** ASTM F1506-2018. CSA Z462-2018. ATPV Rating: 11 cal/cm², CAT 2. NFPA 2112-2018. NFPA 70E-2018.



## 1676

### FR PANTS WITHOUT UTILITY POCKETS

**1550** 88% cotton, 12% polyamide, twill flame resistant 10 oz, Arc Rating 11,0 cal/cm²

**8900** Navy blue

30:28-46:34

The 1676 FR Pant is built for versatility in work. Don't need all the pockets? We've got you covered. Like all our FR products, it's been tested and is compliant with NFPA 70E for your protection. The 1676 work pant comes complete with a gusseted crotch for maneuverability and comfort as well as the tool pockets on both sides.

**CERTIFICATION:** ASTM F1506-2018. CSA Z462-2018. ATPV Rating: 11 cal/cm², CAT 2. NFPA 70E-2018.



## 1686

### FR VISIBILITY PANT

**1550** 88% cotton, 12% polyamide, twill flame resistant 10 oz, Arc Rating 11,0 cal/cm²

**8900** Navy blue

30:28-46:34

This pant is all the comfort and function of the 1676 FR Pant with some added visibility. Built for versatility and safety, like all our FR products, it's been tested and is compliant with NFPA 70E for your protection. The 1686 work pant comes complete with a gusseted crotch for maneuverability and comfort as well as the tool pockets on both sides.

**CERTIFICATION:** ASTM F1506-2020. CSA Z462-2018. ATPV Rating: 11 cal/cm², CAT 2. NFPA 2112-2018. NFPA 70E-2018.







## 3492

FR HOODIE

**1763** 44% lyocell, 39% modacrylic, 14% Aramid, 3% elastane, flame resistant, 12 oz  
**8900** Navy blue

XS-4XL

To say this CAT 2 Fire Resistant hoodie is the most comfortable thing you will wear on the job site is an understatement, to say the least. We've chosen the finest quality materials bonded with the strongest seams in the industry to give you ultimate comfort and ultimate protection. Stay warm, stay safe, stay working.

**CERTIFICATION:** ASTM F1506-2018. CSA Z462-2018. ATPV rating: 17 cal/ cm<sup>2</sup> CAT 2. NFPA 70E-2018.



## 3276

FR COLLARED SHIRT

**1551** 88% cotton, 12% polyamide, twill 3/1, PROBAN® flame resistant, 7 oz  
**8900** Navy blue

S-4XL

Whether you are climbing a wind turbine tower, fixing an air conditioning unit or helping restore power to a community, the Blaklader FR shirt is for you. The perfect complement to our FR pants, completing your professional uniform. The 3276 meets NFPA 70E and CAT2 requirements in a comfortable 7 oz. material. Be sure to add your logo and name, so nobody steals it from you!

**CERTIFICATION:** ASTM F1506-2018. CSA Z462-2018. ATPV Rating: 11 cal/cm<sup>2</sup>, CAT 2. NFPA 2112-2018. NFPA 70E-2018.



## 3491

FR HENLEY

**1770** 97% cotton, 3% elastane, rib, 7oz, flame resistant treated  
**8900** Navy blue

XS-4XL

Lightweight, flame resistant and stylish...sound too good to be true? Not with Blaklader. We're taking our FR gear to the next level of comfort and protection With this flame resistant CAT 2 Henley. This classic style is both comfortable and protective. It's perfect for the job site, but don't be surprised if you find yourself wearing it on the weekend as well.

**CERTIFICATION:** ASTM F1506-2018. CSA Z462-2018. ATPV rating: 13 cal/ cm<sup>2</sup> CAT 2. NFPA 2112-2018. NFPA 70E-2018.



## 3493

FR LONG SLEEVE T-SHIRT

**1770** 97% cotton, 3% elastane, rib, 7oz, flame resistant treated  
**8900** Navy blue

XS-4XL

For those warmer days when a heavy fabric is less than ideal, we created a lighter FR option. Flame resistant protection is always improved with layering. With this CAT 2 rated long-sleeve T-shirt layering is not only possible, it's comfortable. Now whether you're layering for extra protection or just working light, you can trust that We've got your back.

**CERTIFICATION:** ASTM F1506-2018. CSA Z462-2018. ATPV rating: 13 cal/ cm<sup>2</sup> CAT 2. NFPA 2112-2018. NFPA 70E-2018.







# 4786

## MULTINORM SHELL JACKET

**1535** 50% modacrylic, 32% cotton, 9% polyamide, 8% polyester, 1% other fibers, ripstop, flame resistant, laminated, 8,26 oz

**3389** Yellow Hi-viz/Navy blue

XS-5XL

The 4786 was not crafted for the faint of heart. It was built for the bold, the courageous, the determined. If that describes you, then welcome to the best jacket you will ever own. The Multinorm Shell Jacket combines wind and waterproof design with comfortable and durable materials that will shelter you from the harshest conditions, but we didn't stop there. It also boasts a CAT 3 FR certification so you can rest easy knowing you will be protected visible and comfortable.

**CERTIFICATION:** ANSI/ISEA 107-2020 Type R class 3 FR. ASTM F1891-2019. CSA Z462-2018. ATPV Rating: 32 cal/cm², CAT 3. NFPA 70E-2018.



# 1612

## FR VISIBILITY PANT

**1514** 75% cotton, 24% polyester, 1% antistatic, twill, flame resistant antistatic, 10,3 oz

**8933** Navy blue/Yellow Hi-viz

30:28-50:32

Our classic FR pants, with some added visibility. This trusted pant design features tons of pockets, durable materials, triple stitching, and kneepad pockets for our foam kneepad inserts. Function, durability, and safety. What more could you want?

**CERTIFICATION:** ASTM F1506-2020. CSA Z462-2018. ATPV Rating: 11 cal/cm², CAT 2. NFPA 70E-2018.



# 2013

## FR HEAVY BALACLAVA

**1763** 44% lycell, 39% modacrylic, 14% Aramid, 3% elastane, flame resistant, 12 oz

**8900** Navy blue

One size

This 12oz, heavy-weight Balaclava offers added protection for when you need to be extra cautious. Wear it as a neck warmer, or a full face covering, this soft fabric is ultra comfortable without sacrificing any safety standards.

**CERTIFICATION:** ASTM F1506-2018. ATPV rating: 17 cal/cm² CAT 2. CSA Z462-2018. NFPA 70E-2018. NFPA 2112-2018.



# 2013

## FR BALACLAVA

**1770** 97% cotton, 3% elastane, rib, 7oz, flame resistant treated

**8900** Navy blue

One size

This 7oz, light-weight Balaclava offers added protection for when you need to be extra cautious. Wear it as a neck warmer, or a full face covering, this soft fabric is ultra comfortable without sacrificing any safety standards.

**CERTIFICATION:** ASTM F1506-2018. ATPV rating: 13 cal/cm² CAT 2. CSA Z462-2018. NFPA 70E-2018. NFPA 2112-2018.



# 2012

## FR BEANIE

**1770** 97% cotton, 3% elastane, rib, 7oz, flame resistant treated

**8900** Navy blue

One size

Call it a beanie, call it a toque... whatever you call it, it's the one you want when you need protection from the cold and the current. This ultra-soft material will keep you safe and comfortable in any situation.

**CERTIFICATION:** ASTM F1506-2018. CSA Z462-2018. NFPA 2112-2018. NFPA 70E-2018.









# 02

## HI-VIS



ANSI/ISEA  
107-2015



CSA Z96  
2015





# VISIBILITY IS KEY

You need to stand out from the crowd, but not just for safety reasons. In this modern world branding and employee retention are more important than ever. When was the last time you wore a Hi-Vis jacket that you actually liked wearing? When was the last time your jacket or vest lasted longer than a season? Our hi-vis collection outperforms on every level. Comfort, durability, and function is what we do.



ANSI/ISEA  
107-2015

Garment Type	Performance Class	Background Material	Reflective Material	Minimum Width Reflective Marterial
Type R Roadway and Temporary Traffic Control zones	Class 2*	0,50 m <sup>2</sup>	0,13 m <sup>2</sup>	25mm** 35mm
	Class 3**	0,80 m <sup>2</sup>	0,20 m <sup>2</sup>	25mm** 50mm
*For the smallest size offered in Type R, Performance Class 2, a minimum of 0,35m <sup>2</sup> of background material may be used to accomodate small-sized workers. All subsequested larger sizes must use 0,50 m <sup>2</sup>				
**For the smallest size offered in Type R, Performance Class 3, a minimum of 0,65m <sup>2</sup> of background material may be used to accomodate small-sized workers. All subsequested larger sizes must use 0,80 m <sup>2</sup>				
Supplemental Items*** Pants, Overalls, Shorts, Rain pants and Gaiters	Class E	0,30 m <sup>2</sup>	0,07 m <sup>2</sup>	25mm** 50mm
***When a supplement Class E item is worn with Performance Class 2 or 3, the overall classification for the ensemble shall be Performance Class 3				



CSA Z96  
2015

	Class 3 apparel	Class 2 apparel	Class 1 apparel
Description of minimal coverage	Class 2 apparel, plus bands encircling both arms and both legs. These bands shall be composed of combined performance stripes/bands or a combination of retroflective and background material	Full coverage of upper torso (front, back, sides and over shoulders)	Basic harness or stripes/bands over the shoulders and encircling the waist
Background material	See above	See above	0,14 m <sup>2</sup> (minimum)
Retroflective or combined-performance material used in conjunction with back-ground material	0,20 m <sup>2</sup>	0,13 m <sup>2</sup>	0,10 m <sup>2</sup>



# BLUE IS THE NEW BLACK

Set a new standard with our new Blue and Yellow accent. Your favorite products now in a whole new way.



**3468** VISIBILITY POLO



**7160** WOMEN'S HI-VIS WORK PANTS



**4789** HI-VIS AIR MESH JACKET



**1609** HI-VIS X1600 WORK PANTS



WORK SAFE WITH **HI-VIS**



# 1699

## FLEXIBLE WITH STRETCH PANELS

Our latest 1699 pant is setting new standards for high-visibility clothing. We took the best features from our best selling pants and designed an all new hi-vis pants that will keep you cool, help you function better and keep you safe.

The CORDURA® reinforced ripstop material is breathable, tear resistant and water and dirt repellent. We even added top-load kneepads.



### 1699

HI-VIS RIPSTOP PANT

**1831** 85% polyester, 15% cotton, ripstop, 7 oz

**3399** Yellow Hi-viz/Black

30:28-44:34

We're stretching the limits of our hi-vis line with the 1699 hi-vis ripstop pant. The ripstop fabric is lightweight and comfortable, with the unmatched durability of even the heaviest of fabrics letting you take every step on the job site with confidence. All this with our stretch material gusseted crotch for wear and comfort makes this the perfect hi-vis work pant.

**CERTIFICATION:** ANSI/ISEA 107-2015 Class E - Class 3 Type R when combined with performance class 2 or 3 uppers. CSA Z96-15, class 2 when combined with vest, class 3 when combined with 2 or 3 uppers.



### 1633

HI-VIS WORK PANTS

**1860** 65% polyester/35% cotton, 9 oz

**3399** Yellow Hi-viz/Black

30:28-50:32

Durable fabric blend and built-in CORDURA® kneepad pockets stand up to tough conditions. Two utility pockets with bellows, CORDURA-lined back pockets, dark colors in wear points, multiple cargo pockets on side of legs and reflective tape.

**CERTIFICATION:** ANSI/ISEA 107-2015 Class E - Class 3 Type R when combined with performance class 2 or 3 uppers. CSA Z96-15, class 2 when combined with vest, class 3 when combined with 2 or 3 uppers.



### 1609

HI-VIS X1600 WORK PANTS

**1860** 65% polyester/35% cotton, 9 oz

**3399** Yellow Hi-viz/Black

30:28-50:32

**3389** Yellow Hi-viz/Navy blue

30:28-52:32

**9933** Black/Yellow Hi-viz

30:30-50:32

The durable, functional X1600 is now available in a safety pant. The CORDURA® extends up onto the thigh for added protection. Drawstring along boot. CORDURA® utility pockets for strength and versatility. Level 2 3M reflective tape. Be Seen!

**CERTIFICATION:** ANSI/ISEA 107-2015 Class E - Class 3 Type R when combined with performance class 2 or 3 uppers. CSA Z96-15, class 2 when combined with vest, class 3 when combined with 2 or 3 uppers.



### 1697

VISIBILITY RIPSTOP PANTS

**1330** 60% cotton, 40% polyester, ripstop 7 oz

**9933** Black/Yellow Hi-viz

30:28-44:34

We're stretching the limits of our visibility line with the 1697 visibility ripstop pant. The mainly black ripstop fabric is lightweight and comfortable, with the unmatched durability of even the heaviest of fabrics letting you take every step on the job site with confidence. All this with our stretch material gusseted crotch for wear and comfort make this the perfect visibility work pant.

**CERTIFICATION:** CSA Z96-15, class 2 when combined with vest, class 3 when combined with 2 or 3 uppers.







AVAILABLE  
IN TALL SIZES



# 1689

## HI-VIS LINED SHELL PANTS

**1977** 100% polyester, oxford, laminated, wind- and waterproof, breathable, 6 oz

**3399** Yellow Hi-viz/Black  
M-XXXL, LT-XLT

The trusted hi-vis shell pants are now available with winter lining. Face even the coldest, most treacherous conditions in confidence. With CORDURA®-reinforced knees, adjustable and removable suspenders and enough pockets to keep all your tools secure and handy, these pants will weather any storm.

**CERTIFICATION:** ANSI/ISEA 107-2015 Class E - Class 3 Type R when combined with performance class 2 or 3 uppers. CSA Z96-15, class 2 when combined with vest, class 3 when combined with 2 or 3 uppers.



AVAILABLE  
IN TALL SIZES



# 1685

## HI-VIS SHELL PANTS

**1977** 100% polyester, oxford, laminated, wind- and waterproof, breathable, 6 oz

**3399** Yellow Hi-viz/Black, **5399** Orange Hi-viz/Black  
S-5XL, LT-XXLT

Breathable wind- and waterproof high visibility shell pants designed to handle Mother Nature's worst. Functional takes on a new meaning with features including adjustable/removable suspenders, adjustable leg ends with zippers and velcro, and CORDURA®-reinforced fabric over the knees. These pants aren't for any regular job. These pants will keep you safe and dry from your toughest job.

**CERTIFICATION:** ANSI/ISEA 107-2015 Class E - Class 3 Type R when combined with performance class 2 or 3 uppers. CSA Z96-15, class 2 when combined with vest, class 3 when combined with 2 or 3 uppers.



AVAILABLE  
IN TALL SIZES



# 4927

## HI-VIS WINTER JACKET

**1977** 100% polyester, oxford, laminated, wind- and waterproof, breathable, 6 oz

**3399** Yellow Hi-viz/Black, **5399** Orange Hi-viz/Black  
XS-5XL, LT-XXLT

Wind and waterproof with a heavy quilt lining to keep you warm and dry. Fleece lined collar. The winter jacket includes waterproof taped seams, storm cuffs, waterproof chest pockets, arm pocket and 3M reflective tape. ANSI 107 Class 3.

**CERTIFICATION:** ANSI/ISEA 107-2010 Class 3. ANSI/ISEA 107-2015 Type R, Class 3.



# 4789

## HI-VIS AIR MESH JACKET

**1977** 100% polyester, oxford, laminated, wind- and waterproof, breathable, 6 oz

**3399** Yellow Hi-viz/Black  
S-4XL

**3389** Yellow Hi-viz/Navy blue  
XS-4XL

This newly designed jacket is also equipped with cleverly placed reflective details for increased visibility. The air mesh lining provides covers an extra layer for warmth, and the membrane in the outer shell fabric prevents moisture and wind from entering - allowing you to stay dry all day.

**CERTIFICATION:** ANSI/ISEA 107-2015 Type R, Class 3.



AVAILABLE  
IN TALL SIZES



# 4937

## HI-VIS SHELL JACKET

**1977** 100% polyester, oxford, laminated, wind- and waterproof, breathable, 6 oz

**3399** Yellow Hi-viz/Black, **5399** Orange Hi-viz/Black  
XS-5XL, LT-XXLT

Lightweight, wind, and waterproof, including taped seams to keep you dry for the long haul. Safety harness access point through the back. The shell jacket includes waterproof zippers, a detachable hood, inside pockets, 3M reflective tape. ANSI/ISEA 107-2010 Class 3.

**CERTIFICATION:** ANSI/ISEA 107-2010 Class 3. ANSI/ISEA 107-2015 Type R, Class 3.





# 4788

## HI-VIS SOFTSHELL JACKET

**2513** 92% polyester, 8% elastane, 3-layer softshell, waterproof, windproof, breathable, stretch, 8 oz

**3399** Yellow Hi-viz/Black  
S-4XL

Our new softshell jacket is a real head turner – and not just because it's hi-vis. This stylish, wind- and water-resistant jacket is big on safety and features adjustable Velcro sleeves, new front zipper pockets, an adjustable collar, and a detachable hood. We know you work like a pro. It's time to look the part.

**CERTIFICATION:** ANSI/ISEA 107-2015 Class 2.



AVAILABLE  
IN TALL SIZES

# 4787

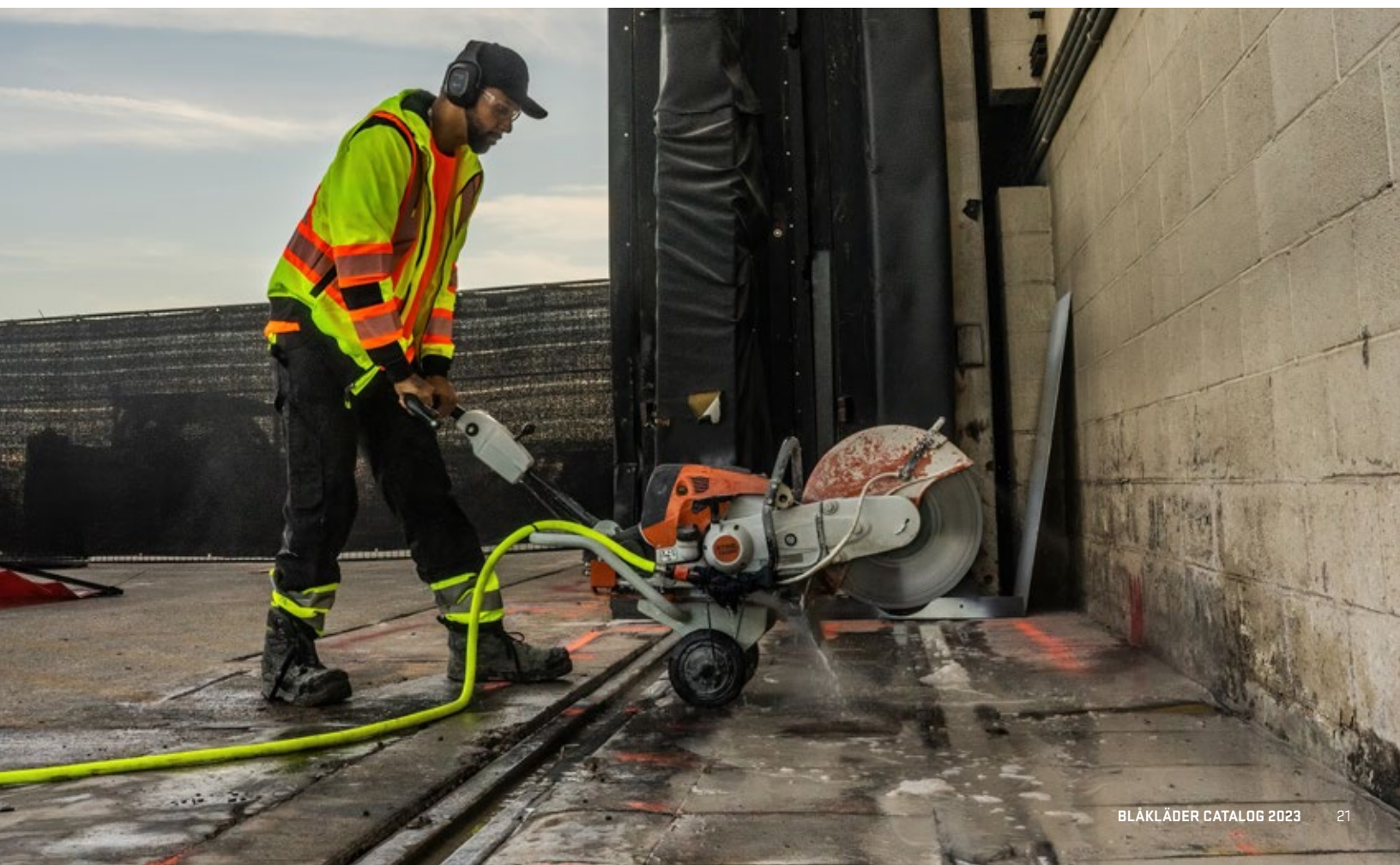
## HI-VIS PREMIUM SHELL JACKET

**1987** 100% polyester, twill, laminated, wind- and waterproof, breathable, 5 oz

**3399** Yellow Hi-viz/Black  
S-5XL, LT-XXLT

Practical and movement friendly hi-vis shell jacket in a smooth, soft and quiet stretch material that gives you high comfort and increased mobility. The jacket is also equipped with cleverly placed reflective details for increased visibility. The fleece mesh lining provides excellent ventilation and the membrane in the outer shell fabric prevents moisture and wind from entering - allowing you to stay dry all day. ANSI/ISEA 107-2015 Type R class 3 NOT FR.

**CERTIFICATION:** ANSI/ISEA 107-2015 Type R, Class 3.







## 3446

HI-VIS ZIP SWEATSHIRT

**1974** 100% polyester, jersey knitted, 7 oz  
**3399** Yellow Hi-viz/Black  
 S-5XL

This ain't your mama's hoodie. Check out the hi-vis details on this hooded sweatshirt - hi-vis yellow and reflective details to make sure you're seen. Great for keeping you cozy when you need extra warmth out there.

**CERTIFICATION:** ANSI/ISEA 107-2015 Type R, Class 3.



## 3442

HI-VIS HOODED SWEATSHIRT

**2528** 100% polyester, jersey, brushed inside, 8 oz  
**3300** Yellow, **5300** Orange  
 S-4XL

This ain't your mama's hoodie. Stay visible and seen in our hi-vis Hoodie with a large front pocket! Great for keeping you cozy when you need extra warmth out there.

**CERTIFICATION:** ANSI/ISEA 107-2015 Type R, Class 3.



## 3486

HI-VIS T-SHIRT

**1011** 100% polyester, anti odor treatment, UV-protection 40+, 4 oz  
**3300** Yellow  
 S-XXL

Hi-vis T-shirt with 50-mm-wide reflective tape. This is no ordinary T-shirt. Complete with anti-odor treatment, UV protection 40+ and ANSI/ISEA 107-2015 Type R, Class 2, this T-shirt keeps the sun off and the smell out.

**CERTIFICATION:** ANSI/ISEA 107-2015 Type R, Class 2.



## 3488

HI VIS LONG SLEEVE T-SHIRT

**1011** 100% polyester, anti odor treatment, UV-protection 40+, 4 oz  
**5300** Orange  
 S-4XL  
**3300** Yellow  
 S-5XL

Get noticed in the 3488 Hi-Vis long sleeve t-shirt. We incorporated reflective tape to complement the Hi-Vis yellow you know and love so you'll never be missed. Comfy and lightweight so you can get to work without worry.

**CERTIFICATION:** ANSI/ISEA 107-2015 Type R, Class 3.



## 3490

HI-VIS SHORT SLEEVED T-SHIRT

**1011** 100% polyester, anti odor treatment, UV-protection 40+, 4 oz  
**5300** Orange  
 M-4XL  
**3300** Yellow  
 M-5XL

This isn't your ordinary hi-vis T-shirt. It's a technical marvel that features an anti-odor treatment and UV protection for those long hot days in the sun. Plus, its bright yellow color and highly-reflective segmented stripes will keep you noticed from all angles, even on the busiest job sites.

**CERTIFICATION:** ANSI/ISEA 107-2015 Type R, Class 3.







## 3468

### VISIBILITY POLO

**1051** 100% polyester pique wicking, moisture transporting, UV protection, 5 oz

**8933** Navy blue/Yellow Hi-viz

XS-5XL

A soft and comfortable polo shirt with tailored reflective transfers for excellent stretch properties and breathability. This polo shirt provides UV protection and the fabric has an anti-odour effect, which reduces bacterial growth and prevents unpleasant odors. The polo shirt has a rib-knitted collar and a button neck.



## 4958

### VISIBILITY ZIP SWEATSHIRT

**2526** 100% Polyester, pique fleece, brushed inside 8 oz

**9933** Black/Yellow Hi-viz

S-4XL

Looking to tone down the hi-vis look? Look no further than the 4958 Visibility Hooded Sweatshirt. We added some hi-vis yellow accents to the classic black hoodie - plus reflective tape for added flair.



## 4994

### MICRO FLEECE JACKET

**1010** 100% polyester, microfleece, antipilling, 5 oz

**9933** Black/Yellow Hi-viz

S-4XL

Cozy up in your personal fleece cocoon and get some serious work done out in the bitter cold. This visibility fleece jacket features yellow striping on the front, back and arms and reflective panels on the shoulders to get you noticed on the job site.



## 3487

### VISIBILITY T-SHIRT

**1011** 100% polyester, anti odor treatment, UV-protection 40+, 4 oz

**3300** Yellow, **5300** Orange

S-4XL

A simple visibility T-shirt kicked up a notch - Blaklader style. Featuring UV protection 40+ and anti-odor treatment, this T-shirt will keep you dry and seen all day.



## 3569

### VISIBILITY CREW SWEATSHIRT

**2528** 100% polyester, jersey, brushed inside, 8 oz

**3300** Yellow, **5300** Orange

S-4XL

Increase your visibility and comfort with this classic crew neck sweatshirt. Now you can take all the comfort of your favorite weekend sweatshirt with you on the job site. We removed the hood on this design to create a great layering piece and accommodate certain safety ratings. It's a must have for the colder seasons..



## 3449

### HOODED SWEATSHIRT

**2528** 100% polyester, jersey, brushed inside, 8 oz

**3300** Yellow, **5300** Orange

XXXL

Work wear should be tough, which is why our sweatshirt has reinforced seams and thick 11-oz. cotton. Lucky for you, that means it's also 100% comfortable so you can move about freely and get your job done easier. It can be our secret. We left it blank so you'd have room for your brand!





# 3139

## HI-VIS SLEEVED VEST

**1831** 85% polyester, 15% cotton, ripstop, 7 oz  
**3399** Yellow Hi-viz/Black  
 S-4XL

This class 3 vest is perfect for a lightweight visibility option. We've given it the full Blaklader package. Breathable materials bonded with strong seams and durable 3M reflective tape make this vest a great option for any job site. Now with Class 3 certification, we've simplified things even more. It's one vest to rule them all you might say.

**CERTIFICATION:** ANSI/ISEA 107-2015 Type R, Class 3.



# 3132

## HI-VIS SURVEYOR'S VEST

**1831** 85% polyester, 15% cotton, ripstop, 7 oz  
**3399** Yellow Hi-viz/Black  
 S-4XL

With more pockets than you can count, you'll never lose a tool again with this hi-vis surveyor's vest. Plus, highly reflective stripes for visibility and black panels where your hands hang to keep your workwear looking clean. Tired of the same old cheap vests? Take your hi-vis game to a new level.

**CERTIFICATION:** ANSI/ISEA 107-2015 Type R, Class 2.



# 3130

## HI-VIS VEST

**1054** 100% polyester, knitted mesh, 4 oz  
**3399** Yellow Hi-viz/Black  
 S-5XL

The long-awaited Blaklader hi-vis mesh vest is here at last. Built like the rest of our garments the quality is unrivaled in the vest arena. The contrast with black fabric allows you to work at your best while keeping the garment clean and visible as long as possible. Now you have a Blaklader option for the warmer days when our jackets are just too much. ANSI/ISEA 107-2015 Type R class 2 NOT FR.

**CERTIFICATION:** ANSI/ISEA 107-2015 Type R, Class 2.



# 3127

## HI-VIS RIPSTOP UTILITY VEST

**1831** 85% polyester, 15% cotton, ripstop, 7 oz  
**3300** Yellow  
 S-XXXL

It's not your average hi-vis vest. Made from a durable mesh and Ripstop blend, it includes swinging chest pockets with safety straps, four reinforced utility pockets at waist, safety harness access point through the back, a 3-inch extension with zipper and Level 2 3M reflective tape. ANSI/ISEA 107-2010 Class 2.

**CERTIFICATION:** ANSI/ISEA 107-2010 Class 2.



# 3802

## HI-VIS SHELL VEST

**1804** 85% polyester, 15% cotton, satin, 9 oz  
**3300** Yellow  
 XS-4XL

This Hi-Vis safety vest is built for more than just visibility. It's custom-built for the harsh world of construction in the elements. Worn by some of the world's leading construction professionals, this vest is the perfect outer layer when you need something heavy-duty to keep you safe and visible.

**CERTIFICATION:** ANSI/ISEA 107-2010 Class 2.



# 3138

## 5-POINT TEAR AWAY VEST

**1054** 100% polyester, knitted mesh, 4 oz  
**5300** Orange  
 S-L-XL-3XL

Sometimes wearing safety gear means being prepared for a quick escape. This quick tear away vest has 5 break points for an easy escape in the case of a hangup or snag. We also made it an adjustable size to fit a wider range of wearers. The mesh back and front provides excellent ventilation for those hot summer days and the safety harness access allows for additional safety gear.

**CERTIFICATION:** ANSI/ISEA 107-2015 Type R, Class 2. CSA Z96-15, class 2.





FIRE TRUCK

TO BE BACKED TO WALL





## 4928

### HI-VIS WINTER JACKET

**1977** 100% polyester, oxford, laminated, wind- and waterproof, breathable, 6 oz  
**3399** Yellow Hi-viz/Black, **5300** Orange  
 S-5XL

Wind and waterproof with a heavy quilt lining to keep you warm and dry. Fleece lined collar. The winter jacket includes waterproof taped seams, storm cuffs, waterproof chest pockets, arm pocket and 3M reflective tape.

**CERTIFICATION:** ANSI/ISEA 107-2015 Type R, Class 3. CSA Z96-09, Class 2. Meets CSA Z96-15 class 3 when combined with Blåkläder 1685, 1689 pants.



## 4938

### HI-VIS SHELL JACKET

**1977** 100% polyester, oxford, laminated, wind- and waterproof, breathable, 6 oz  
**3399** Yellow Hi-viz/Black, **5300** Orange  
 S-5XL

Lightweight, wind and waterproof, including taped seams to keep you dry for the long haul. Safety harness access point through back. The shell jacket includes waterproof zippers, detachable hood, inside pockets, 3M reflective tape.

**CERTIFICATION:** ANSI/ISEA 107-2015 Type R, Class 3. CSA Z96-09, Class 2. Meets CSA Z96-15 class 3 when combined with Blåkläder 1685, 1689 pants.



## 4975

### HI-VIS SOFTSHELL JACKET

**2517** 100% polyester, 3-layer softshell fabric, wind- and waterproof, breathable, 9 oz  
**3399** Yellow Hi-viz/Black  
 S-4XL

Come rain, hail or high water, this well-constructed hi-viz jacket will help keep you noticed in heavy downpours and nightfall. Plus, its blackout front pockets - the part you're always touching - help keep this jacket's bright parts brighter for maximum effectiveness. Certified in CSA Z96-15, S-M class 2, L-4XL class 3.

**CERTIFICATION:** ANSI/ISEA 107-2015 Type R, Class 3. CSA Z96-15, class 2. Meets CSA Z96-15 class 3 when combined with Blåkläder trouser class 2.



## 3448

### HI-VIS ZIP SWEATSHIRT

**1974** 100% polyester, jersey knitted, 7 oz  
**3399** Yellow Hi-viz/Black  
 S-4XL

Here's a bright idea: get your crew dressed up with these hi-viz, zip-up hoodies. They'll keep them looking fresh with black panels strategically placed where they get dirty first - under the forearms, cuffs, and tops of the shoulders. Get noticed first with Blåkläder.

**CERTIFICATION:** ANSI/ISEA 107-2015 Type R, Class 3. CSA Z96-15, class 2. Meets CSA Z96-15 class 3 when combined with Blåkläder trouser class 2.



## 3495

CSA HI-VIS T-SHIRT

**1011** 100% polyester, anti odor treatment, UV-protection 40+, 4 oz

**5300** Orange

S-4XL

This isn't your ordinary hi-vis t-shirt. This CSA Class 2 approved T-shirt is a technical marvel that features an anti-odor treatment and UV protection for those long hot days in the sun. Plus, its bright yellow color and highly-reflective stripes will keep you noticed from all angles, even on the busiest job sites.

**CERTIFICATION:** CSA Z96-15, class 2.



## 3496

CSA HI-VIS LONG SLEEVE T-SHIRT

**1011** 100% polyester, anti odor treatment, UV-protection 40+, 4 oz

**5300** Orange

S-4XL

Get noticed in this CSA Class 2 Hi-Vis long sleeve t-shirt. We incorporated reflective tape to complement the Hi-Vis yellow you know and love so you'll never be missed. Comfy and lightweight so you can get to work without worry

**CERTIFICATION:** CSA Z96-15, class 2.



## 3134

HI-VIS SURVEYORS VEST

**1831** 85% polyester, 15% cotton, ripstop, 7 oz

**3399** Yellow Hi-viz/Black

S-5XL

Is there really such a thing as too many pockets for your work stuff? This pro-grade, hi-vis vest features blackout, drainable front pockets and extra nooks and crannies to stow your gear. Plus, its cool mesh shoulder material takes comfort to the next level.



## 3133

HI-VIS VEST

**1054** 100% polyester, knitted mesh, 4 oz

**3399** Yellow Hi-viz/Black

M-4XL

Gear up with a premium Hi-Vis safety vest that works hard at getting you noticed, rain or shine. Black pockets hide marks from dirty hands to keep your bright pro-grade yellow vest brighter for longer.

**CERTIFICATION:** CSA Z96-15, class 2.





# 03

## RAIN



### 4312

HI-VIS RAIN JACKET



**2003** 100% polyester, polyurethane coated, wind and waterproof, 7 oz

**3399** Yellow Hi-viz/Black

S-4XL

What rain? The 4312 Hi-Vis rain jacket is equipped with wind and waterproof PU Coating to keep you safe and dry. This jacket stands out with Hi-Vis yellow body and added reflective details.

**CERTIFICATION:** ANSI/ISEA 107-2015 Type R, Class 3.





## 4318

HI-VIS RAIN COAT



**2003** 100% polyester, polyurethane coated, wind and waterproof, 7 oz

**3399** Yellow Hi-viz/Black  
S-4XL

This waterproof, hi-vis coat is like a bright umbrella for your body. Its polyester PU-coated material is completely wind- and waterproof to keep you warm, dry and highly visible in torrential downpours. Even the pockets and zippers are designed to keep dry things dry in the rain.

**CERTIFICATION:** ANSI/ISEA 107-2015 Type R, Class 3. CSA Z96-15, class 2. Meets CSA Z96-15 class 3 when combined with Blåkläder trouser class 2.



## 4319

HI-VIS RAIN JACKET



**2003** 100% polyester, polyurethane coated, wind and waterproof, 7 oz

**3399** Yellow Hi-viz/Black  
S-4XL

If staying dry is on your punch list, this rain jacket will get the job done. It's wind- and waterproof polyester PU-coated material, and sealed zippers work to keep you warm and comfortable. And of course, hi-vis reflective stripes will help keep you seen while working in downpours.

**CERTIFICATION:** ANSI/ISEA 107-2015 Type R, Class 3. CSA Z96-15, class 2. Meets CSA Z96-15 class 3 when combined with Blåkläder trouser class 2.



## 4317

HOODED RAIN JACKET WITH REFLECTIVE DETAILS

**2003** 100% polyester, polyurethane coated, wind and waterproof, 7 oz

**9900** Black  
S-4XL

Get the protection of 100 umbrellas with this much-easier-to-wear polyurethane-coated rain jacket. Its water and wind proof to keep you dry and focused in the face of nasty weather. Its black color is extra tough to get dirty, even on the dirtiest of job sites.



## 4316

HI-VIS RAIN COAT



**2003** 100% polyester, polyurethane coated, wind and waterproof, 7 oz

**3399** Yellow Hi-viz/Black  
S-4XL

Rain rain come back some other day. No storm stands a chance against our 4316 Hi-Vis Rain Coat. Our polyester PU Coated material is wind and waterproof to keep you safe and warm. This jacket is equipped with cleverly placed reflective details for increased visibility.

**CERTIFICATION:** ANSI/ISEA 107-2015 Type R, Class 3.



## 1380

RAIN PANTS



**2003** 100% polyester, polyurethane coated, wind and waterproof, 7 oz

**3300** Yellow  
S-4XL

Breathable wind-and-waterproof rain pants designed to keep you dry through whatever weather. Adjustable straps to create the perfect fit, strategically placed reflective tape for added visibility.

**CERTIFICATION:** ANSI/ISEA 107-2015 Class E - Class 3 Type R when combined with performance class 2 or 3 uppers. CSA Z96-15, class 2 when combined with vest, class 3 when combined with 2 or 3 uppers.



## 1387

RAIN PANTS WITH REFLECTIVE DETAILS

**2003** 100% polyester, polyurethane coated, wind and waterproof, 7 oz

**9900** Black  
S-4XL

Keep your legs high and dry with these waterproof rain pants. These pants have CORDURA®-reinforced knees and the reflective stripes make you visible from all angles. We've got your front and back side covered with these pants.



# 04

## PANTS



# 1622

## 4-WAY STRETCH WORK PANTS



ZIP-OFF UTILITY POCKETS

CORDURA® REINFORCEMENT  
AT POCKET OPENING

REINFORCED RULER POCKET

ADJUSTABLE LEG HEM WITH  
DRAWSTRING AND REINFORCEMENT

4-WAY STRETCH MATERIAL

LEGPocket WITH PHONE  
AND PEN POCKET

NEW KNEEPAD DESIGN

CORDURA® REINFORCEMENT





# STRETCH IT!



**WATER  
RESISTANT**



STRETCH IN  
GUSSET AND  
BACKSIDE

## 1615

### SOFTSHELL PANT

**2513** 92% polyester, 8% elastane, 3-layer softshell, waterproof, windproof, breathable, stretch, 8 oz

**9900** Black

30:28-44:34

The 1615 Softshell pant is an all-new water-resistant design focused on comfort and function. This advanced material is built to take a beating in the harshest environments. Extreme durability and comfort? it's a perfect combo for the working professional.

## 1622

### 4-WAY STRETCH WORK PANTS

**1644** 93% polyamide, 7% elastane, Dobby, 4-way stretch, 295 g/m<sup>2</sup>

**9900** Black, **9954** Black/Orange

30:28-44:34

Prepare yourself for the ultimate work pant. An all-new 4-way stretch fabric, a newly designed kneepad pocket, CORDURA reinforcements, and detachable utility pockets are only some of the features that make this pant one of the best we've ever made. Be one of the first to experience a revolution in workwear

## 1655

### SERVICE PANTS WITH STRETCH

**1845** 65% polyester, 35% cotton, plain, 5 oz

**9900** Black

30:28-44:34

Now you can squat, jump, kick and crawl with confidence. These service pants feature our tough stretch material throughout for unprecedented comfort and maneuverability. Its generously sized utility pockets are perfect for carrying tools and parts on the go.



**RIP  
STOP**



**RIP  
STOP**

## 1690

### RIPSTOP PANTS

**1330** 60% cotton, 40% polyester, ripstop 7 oz

**1098** White/Dark grey, **2700** Stone, **8600** Dark navy blue, **9900** Black

30:28-50:32

A new, heavily tested fabric is launched within Blaklader. The ripstop fabric is lightweight and comfortable with an unmatched durability of even the heaviest fabrics. Equipped with features like kneepad pockets and carpenter pockets on the leg makes this pant the essential tool for your work day. The gusseted crotch panel made from stretch material increases the flexibility and durability of the garment.

## 1691

### RIPSTOP PANTS WITH UTILITY POCKETS

**1330** 60% cotton, 40% polyester, ripstop 7 oz

**1098** White/Dark grey, **2700** Stone, **8600** Dark navy blue, **9900** Black

30:28-44:34

Our top-selling ripstop pant now with the utility pockets you've wanted. The ripstop fabric is lightweight and comfortable with an unmatched durability of even the heaviest fabrics. Equipped with features like kneepad pockets and carpenter pockets on the leg makes this pant the essential tool for your workday. The gusseted crotch panel made from stretch material increases the flexibility and durability of the garment.







## 1659

### URBAN CORDURA® DENIM

**1140** 88% cotton, 12% polyamide, denim, coated, CORDURA® denim, 11 oz

**8900** Navy blue, **9900** Black  
30:28-44:34

Discover our hard wearing CORDURA® denim pants with internal knee pad pockets. They combine an everyday workwear functionality with an exciting design and high craftsman quality. With a loose fit and great comfort it feels like a nice pair of jeans but with four time's stronger material than normal denim.



## 1610

### SERVICE/MECHANIC PANT

**1800** 65% polyester, 35% cotton, twill, 7 oz

**8900** Navy blue  
30:28-50:32

Our tried and trusted work pants designed with the mechanic and service industry in mind. Made from polyester and cotton blend, these pants keep you comfy so you can get on with the work day. Knee pad pockets made from the main pant fabric blend seamlessly for a clean look.



## 1600

### X1600 WORK PANTS

**1370** 100% cotton, 11 oz

**9499** Grey/Black, **9900** Black  
30:28-44:34

These pants aren't made for just any craftsman. A cotton canvas base covered by extended CORDURA® leg shields makes them the pants of hammer-wielding warriors. Adjustable kneepads and reinforced utility pockets, side pockets, ankle cuffs and belt loops keep you agile, comfortable and protected on the most aggressive jobsites. If you're looking for a pair of pants to wear out on Saturday night, keep on looking. But if you think you can handle the X1600, go ahead and prove us wrong.



## 1630

### BANTAM WORK PANTS - WITH UTILITY POCKETS

**1310** 100% cotton, 8 oz

**2700** Stone, **2800** Antique khaki, **8300** Steel blue, **9900** Black  
30:28-50:32

These Blaklader work pants are as tough as armor and light as a feather. The 8 oz. cotton canvas material makes them as comfortable as your oldest jeans. The CORDURA® reinforcements and triple stitching make them as tough as a brand new bulletproof vest. If durability and functionality isn't what you're looking for, you came to the wrong place. If you're a leader, start wearing pants like a leader.



## 1630

### BRAWNY WORK PANTS - WITH UTILITY POCKETS

**1320** 100% cotton, 12 oz

**2800** Antique khaki, **8300** Steel blue  
30:28-50:32  
**9900** Black  
32:28-50:32

If the jobsite keeps shredding your jeans, it's time to upgrade to Brawny pants. Made from heavy 12 oz. cotton, they're light enough to wear in the warm weather but durable enough to last. Brawny pants are the work place trifecta: durable, comfortable and lightweight.



## 1680

### HEAVY WORKER PANTS

**1380** 78% polyester, 22% cotton, 10 oz

**8999** Navy blue/Black, **9900** Black  
30:28-44:34  
**2399** Khaki/Black  
32:28-44:34

You might say Heavy Worker pants have a timeless look - timeless because you won't be buying new pants for a long time. Proven to last longer than four pairs of jeans, these sturdy polyester-cotton tanks include loads of CORDURA® reinforcements in strategic wear points on the knees, rear pockets, seat and ankle cuffs. If Blaklader's Heavy Workers don't stand up to your jobsite, nothing will. If you are looking for something tougher, you better have some sheet metal and a welder.





# 05

## PAINTER





# 3555

SHORT SLEEVE BRANDED T-SHIRT

**1042** 100% cotton, single jersey, 4 oz

**1000** White

S-4XL

Show everyone you mean business with this 100% cotton short-sleeve T-shirt featuring our no-nonsense logo on the chest.



# 3557

LONG SLEEVE BRANDED T-SHIRT

**1042** 100% cotton, single jersey, 4 oz

**1000** White

S-4XL

Show everyone you mean business with this 100% cotton long-sleeve T-shirt featuring our no-nonsense logo on the chest.



# 3554

SHORT SLEEVE T-SHIRT

**1042** 100% cotton, single jersey, 4 oz

**1000** White

S-4XL

Get back to the basics with this tough, 100% cotton short-sleeve T-shirt that will keep you comfortable while you're hard at work. The comfort of Blaklader with your own company logo. What's better than that?



# 3559

LONG SLEEVE T-SHIRT

**1042** 100% cotton, single jersey, 4 oz

**1000** White

S-4XL

Get back to the basics with this tough, 100% cotton long-sleeve T-shirt that will keep you comfortable while you're hard at work. It's time to roll up your sleeves – just because you can, but only if you want to. Best part, throw your own logo on it!



# 4940

KNITTED JACKET

**2117** 100% polyester, knitted, 11 oz

**9099** Grey melange/Black

S-XXXL

Knitted jacket with smart designer hood for comfort. The jacket has contrasting zips and is reinforced with soft shell material on the elbows, shoulders and back for improved tear resistance. This is a great jacket for leisure and work.





# 1690

## RIPSTOP PANTS

**1330** 60% cotton, 40% polyester, ripstop 7 oz

**1098** White/Dark grey

30:28-50:32

A new, heavily tested fabric is launched within Blaklader. The ripstop fabric is lightweight and comfortable with an unmatched durability of even the heaviest fabrics. Equipped with features like kneepad pockets and carpenter pockets on the leg makes this pant the essential tool for your work day. The gusseted crotch panel made from stretch material increases the flexibility and durability of the garment.



# 1691

## RIPSTOP PANTS WITH UTILITY POCKETS

**1330** 60% cotton, 40% polyester, ripstop 7 oz

**1098** White/Dark grey

30:28-44:34

Our top-selling ripstop pant now with the utility pockets you've wanted. The ripstop fabric is lightweight and comfortable with an unmatched durability of even the heaviest fabrics. Equipped with features like kneepad pockets and carpenter pockets on the leg makes this pant the essential tool for your workday. The gusseted crotch panel made from stretch material increases the flexibility and durability of the garment.



# 1631

## PAINTER PANTS

**1210** 100% cotton, 9 oz

**1000** White

30:28-44:34

Don't worry painters. We didn't forget about you. Painting is just as demanding as any other trade, so it requires the same functional clothing to get the job done smarter and faster. So, whether you're wearing another pair of white workpants or paint-splattered jeans, don't you think it's time you got some-thing truly built for your trade?



# 1638

## RIPSTOP SHORTS

**1330** 60% cotton, 40% polyester, ripstop 7 oz

**1098** White/Dark grey

30-44

With an extra breathable, stretch material in the crotch, it's easy to forget that you're wearing one of our toughest pairs of shorts. You'll enjoy every cool breeze and have the freedom to take on high steps and jumps with rip-roaring confidence.



# 1637

## RIPSTOP SHORTS - WITH UTILITY POCKETS

**1330** 60% cotton, 40% polyester, ripstop 7 oz

**1098** White/Dark grey

30-44

This is the closest you can get to not wearing shorts while wearing some seriously heavy-duty shorts. They feature stretchy, breathable fabric in the crotch to keep things cool and give you the freedom to move. Plus, you've got built-in utility pockets for all your gear. The riptops here.



# 1634

## PAINTERS WORK SHORTS

**1210** 100% cotton, 9 oz

**1000** White

30-44

Smooth comfortable 11 oz. cotton delivers high performance durability for all you warm weather painters.



# 1691

## RIPSTOP PANTS WITH UTILITY POCKETS

**RIP  
STOP**

HAMMER LOOP

CORDURA® REINFORCED  
UTILITY POCKETS

GUSSETED CROTCH WITH  
STRETCH PANELS

ZIP POCKET

CORDURA® REINFORCED  
KNEEPAD POCKET

DURABLE AND LIGHTWEIGHT  
RIPSTOP MATERIAL

ADJUSTABLE HEM WITH  
DRAWSTRING AND CORDURA®  
REINFORCEMENT





# 06

## VEST/SHORTS

KEEP  
WORKING  
BUT **STAY  
COOL!**





## 1637

### RIPSTOP SHORTS - WITH UTILITY POCKETS

**1330** 60% cotton, 40% polyester, ripstop 7 oz  
**1098** White/Dark grey, **2700** Stone, **8600** Dark navy blue, **9900** Black  
 30-44

This is the closest you can get to not wearing shorts while wearing some seriously heavy-duty shorts. They feature stretchy, breathable fabric in the crotch to keep things cool and give you the freedom to move. Plus, you've got built-in utility pockets for all your gear. The ripstops here.



## 1638

### RIPSTOP SHORTS

**1330** 60% cotton, 40% polyester, ripstop 7 oz  
**1098** White/Dark grey, **2700** Stone, **8600** Dark navy blue, **9900** Black  
 30-44

With an extra breathable, stretch material in the crotch, it's easy to forget that you're wearing one of our toughest pairs of shorts. You'll enjoy every cool breeze and have the freedom to take on high steps and jumps with rip-roaring confidence.



## 1692

### RIPSTOP LONG SHORT WITH UTILITY POCKETS

**1330** 60% cotton, 40% polyester, ripstop 7 oz  
**2700** Stone, **8600** Dark navy blue, **9900** Black  
 30-44

The Ripstop Long Short...is more than an oxymoron. It's everything you know and love in our classic Ripstop shorts, with a little extra length. Suns out, thighs covered.



CORDURA®-  
REINFORCED  
THIGHS



## 1602

### WORK SHORTS X1600

**1310** 100% cotton, 8 oz  
**9900** Black  
 30-44

Our popular X1600 series is also available as shorts. The comfortable fit and lots of practical pocket solutions make these work shorts a great choice in warm weather. The shorts have two free nail pockets in CORDURA® with tool loops that can be worn inside the trousers. Leg pocket with telephone pocket in water-resistant material.



## 1627

### GLASGOW KILT

**1370** 100% cotton, 11 oz  
**9900** Black  
 30-44

It takes a real man to wear a kilt - especially this one. The Glasgow has become the badge of craftsmen who take the road less traveled. It has the same functional pockets as Blaklader pants, but it includes a ventilation system that pants just can't offer. Sure, you'll be the only guy on the jobsite in a kilt. But you like it that way.



## 3115

### RIPSTOP KANGAROO MESH VEST

**1330** 60% cotton, 40% polyester, ripstop 7 oz  
**2700** Stone, **8600** Dark navy blue, **9900** Black  
 S-XXXL

This vest's main fabric is Blaklader's new heavily tested ripstop material. It's lightweight, comfortable, and extremely durable. Slip on this vest to stay cool and comfortable with front and back mesh fabric. Includes phone pocket, pen pocket, front and back nail pockets and a side hammer loop to hold everything you need to make the job a breeze.



07

WIND/WATER/COLD



# 4742

## SUPERIOR COMFORT IN EXTREME CONDITIONS

This line of outerwear is designed to protect against all elements and provide comfort, warmth and durability on the jobsite. No matter what the task, we have the jacket for you.

### 4742

PUFFY/SOFTSHELL JACKET

**2513** 92% polyester, 8% elastane, 3-layer softshell, waterproof, windproof, breathable, stretch, 8 oz

**9900** Black, **9954** Black/Orange

S-4XL

This multi-functional jacket is designed to be your go-to piece for warmth, comfort and style. A warm puffy core trimmed with softshell sleeves for added water resistance makes this an instant fan favorite for the hard core construction professional or the weekend warrior.



SOFTSHELL  
WIND &  
WATER  
RESISTANT

### 4939

PRO SOFTSHELL JACKET

**2517** 100% polyester, 3-layer softshell fabric, wind- and waterproof, breathable, 9 oz

**8642** Dark navy/Green, **8656** Dark navy/Red, **8942** Navy/Green, **9756** Dark grey/red, **9992** Black/silver

S-5XL

With the 4939 jacket, there's no such thing as adverse weather conditions. With two insulating layers and an outer windproof and waterproof stretch layer, there's no job too wet or too cold. While other guys are sitting around drinking hot cocoa, you'll be out swinging hammers and taking names.



SOFTSHELL  
WIND &  
WATER  
RESISTANT

### 4957

SOFTSHELL JACKET

**2517** 100% polyester, 3-layer softshell fabric, wind- and waterproof, breathable, 9 oz

**9900** Black

S-XXXL

With the 4957 jacket, wet working conditions become a worry of the past. Even without a hood, this jacket gets the job done with wind- and waterproof materials and no taped seams. The fleece-lined collar and extended back are just a few of the stand-out features that take this jacket to the Blaklader level.





## 4816

### TOUGHGUY PILE LINED JACKET

**1370** 100% cotton, 11 oz

**9900** Black

S-XXXL

The Tough Guy Pile-Lined jacket is built with a thick cotton canvas exterior for rugged durability and insulating pile lining for extreme warmth and comfort. Like all Blaklader jackets, it has an extended back to keep you covered on those drafty days. So if you have the work ethic of a mailman, get yourself a jacket that means business.



## 4855

### TWO FISTED FLEECE JACKET

**2520** 3-layer Polyester/PU, Windstopper Type, 14 oz

**9900** Black

M-XXXL

**9499** Grey/Black

S-XXXL

Think your work is too tough for fleece? Then you haven't tried the Two Fisted. It has strategic CORDURA® reinforcements in high-wear areas on the shoulders, arms and sides. So you can quit worrying about ripping your clothes and start thinking about the task at hand. With a wind and water resistant membrane between two layers of fleece, winter doesn't stand a chance. Lead the worksite war on winter with a jacket made to beat the elements.



## 3845

### TWO FISTED FLEECE VEST

**2524** 100% polyester, 3-layer fleece, laminated, waterproof, windproof, breathable, 13oz

**9900** Black

S-4XL

Any vest is great for maximum mobility, but the Two Fisted Fleece vest adds functionality with three deep pockets to keep your tools close at hand. Like all Blaklader fleece, it has a wind and water resistant membrane and an extended back. Add reflective piping for low-lit worksites and that's one functional vest. Wearing any other vest is like trying to hammer a nail with a screwdriver.



INSULATED

## 4781

### WINTER JACKET - LINED

**1987** 100% polyester, twill, laminated, wind- and waterproof, breathable, 5 oz

**9900** Black

S-4XL

Tough winter gear doesn't have to be tough to wear. This jacket lets you move freely and quietly with its extra-comfortable stretch material. A water-resistant membrane keeps the wet out while a breathable fleece mesh lining keeps the comfort in. Plus, black panels help hide dirt in high-contact areas so you can look sharp, even if you're knee-deep in snow.



## 4797

### SHELL JACKET

**1987** 100% polyester, twill, laminated, wind- and waterproof, breathable, 5 oz

**9900** Black

S-4XL

Practical and movement friendly shell jacket in a smooth, soft and quiet stretch material that gives you high comfort and increased mobility. The jacket is also equipped with cleverly placed reflective details for increased visibility. The fleecemesh lining provides excellent ventilation and the membrane in the surface fabric prevents moisture from entering - allowing you to keep dry all day.

# 4742

## PUFFY/SOFTSHELL JACKET



REMOVABLE HOOD

PUFFY INSULATION

ZIP POCKET

SOFTSHELL SLEEVES

WARM AND  
BREATHABLE

COLORED HIGHLIGHTS  
FOR BRANDING





# 08

## SHIRTS/ SWEATSHIRTS





## 3443

### 3D T-SHIRT

**1042** 100% cotton, single jersey, 4 oz  
**2509** Warm beige, **4109** Autumn Green, **5909** Burned Red, **8209** Blue limited, **9900** Black  
 S-4XL

Take your shirt game to the next level with the 3D "Blåkläder" T-shirt! This bold new look is crafted in 100% cotton material for premium comfort. The 3D T is already a Blåkläder classic and it's perfect for wearing both on and off the job site.



## 3441

### 3D HOODIE

**1158** 80% cotton, 20% polyester, terry knit inside brushed 11 oz  
**2509** Warm beige, **4109** Autumn Green, **5909** Burned Red, **8209** Blue limited, **9900** Black  
 S-4XL

Everyone loves a good Hoodie. Well, this one raises the bar. This bold new look is crafted in 100% cotton material with a classic fit. It also boasts an all-new 3D "Blåkläder" logo to help you stand out in the crowd. This hoodie is seriously cozy, but don't let it fool you, just like any Blåkläder item, it's ready for a hard day's work.



## 3445

### HOODED ZIP-UP SWEATSHIRT

**1048** 80% cotton, 20% polyester, terry knit inside brushed 11 oz  
**8600** Dark navy blue, **9400** Grey, **9900** Black  
 S-4XL

The classic Zip-up hoodie is a true standard in workwear. This hoodie is warm and soft on the inside, but don't let it fool you. It's here to get the job done day after day and keep on kicking.



## 3555

### SHORT SLEEVE BRANDED T-SHIRT

**1042** 100% cotton, single jersey, 4 oz  
**1000** White, **8600** Dark navy blue, **9400** Grey, **9900** Black  
 S-4XL

Show everyone you mean business with this 100% cotton short-sleeve T-shirt featuring our no-nonsense logo on the chest.



## 3557

### LONG SLEEVE BRANDED T-SHIRT

**1042** 100% cotton, single jersey, 4 oz  
**1000** White, **8600** Dark navy blue, **9400** Grey, **9900** Black  
 S-4XL

Show everyone you mean business with this 100% cotton long-sleeve T-shirt featuring our no-nonsense logo on the chest.



## 3447

### HOODED SWEATSHIRT WITH PRINT

**1048** 80% cotton, 20% polyester, terry knit inside brushed 11 oz  
**8600** Dark navy blue, **9400** Grey, **9900** Black  
 S-4XL

If it didn't have reinforced seams and thick 11-oz. cotton, we wouldn't put our name on it. We stand behind our seriously tough sweatshirts. By the way, they're also seriously comfortable to work in.



# 4740

## SHOW YOUR BRAND IN TECHNICAL EXCELLENCE

Don't settle with the garments you put your name on. Your brand deserves high quality and your potential customers will see the difference.

### 4740

#### KNITTED FLEECE JACKET

**2536** 97% polyester, 3% elastane, Jacquard knit, one side brushed, stretch, 290 g/m<sup>2</sup>  
**4199** Autumn green/Black, **5999** Burned Red/Black, **8299** Numb Blue/Black, **9799** Dark grey/Black  
 S-4XL

This hooded knit jacket is built with a stylish design and unbeatable comfortable fleece quality. Boasting a unique material that can best be described as a three-dimensional fleece. The brushed material gives the jacket its appearance as well as its comfort and warmth when needed. The softshell reinforcement provides added durability and branding space, while leaving room for ventilation. The 4740 is the ultimate jacket for work or relaxation.



### 4965

#### KNITTED JACKET

**2117** 100% polyester, knitted, 11 oz  
**9710** Antracit grey/white  
 M-XXL  
**9056** Grey melange/Red  
 M-XXXL

Comfortable knitted jacket with zippers in contrasting colour. The jacket has elastic edging at sleeve ends and hem, extended back and fleece lined collar. The front pockets have zippers.



### 4940

#### KNITTED JACKET

**2117** 100% polyester, knitted, 11 oz  
**3399** Yellow Hi-viz/Black, **8642** Dark navy/Green, **9099** Grey melange/Black, **9799** Dark grey/Black  
 S-XXXL

Knitted jacket with smart designer hood for comfort. The jacket has contrasting zips and is reinforced with soft shell material on the elbows, shoulders and back for improved tear resistance. This is a great jacket for leisure and work.



## 3451

### SHORT SLEEVE POLO SHIRT

**1051** 100% polyester pique wicking, moisture transporting, UV protection, 5 oz  
**8900** Navy blue, **9400** Grey, **9900** Black  
 S-4XL

Whether you're 30 feet up on bucks or at ground level talking to your customers, this polo shirt says you're the go-to guy to get things done. This polo features the Blaklader logo low and on the side, and is available in three colors. Can't decide which color? Collect them all.



## 3554

### SHORT SLEEVE T-SHIRT

**1042** 100% cotton, single jersey, 4 oz  
**1000** White, **8600** Dark navy blue, **9400** Grey, **9900** Black  
 S-4XL

Get back to the basics with this tough, 100% cotton short-sleeve T-shirt that will keep you comfortable while you're hard at work. The comfort of Blaklader with your own company logo. What's better than that?



## 3559

### LONG SLEEVE T-SHIRT

**1042** 100% cotton, single jersey, 4 oz  
**1000** White, **8600** Dark navy blue, **9400** Grey, **9900** Black  
 S-4XL

Get back to the basics with this tough, 100% cotton long-sleeve T-shirt that will keep you comfortable while you're hard at work. It's time to roll up your sleeves – just because you can, but only if you want to. Best part, throw your own logo on it!



## 3449

### HOODED SWEATSHIRT

**1048** 80% cotton, 20% polyester, terry knit inside brushed 11 oz  
**8600** Dark navy blue, **9400** Grey, **9900** Black  
 S-4XL

Workwear should be tough, which is why our sweatshirt has reinforced seams and thick 11-oz. cotton. Lucky for you, that means it's also 100% comfortable so you can move about freely and get your job done easier. It can be our secret. We left it blank so you'd have room for your brand!



# 09

## WOMEN'S





## 4968

### WOMEN'S HI-VIS SHELL JACKET

**1987** 100% polyester, twill, laminated, wind- and waterproof, breathable, 5 oz  
**3399** Yellow Hi-viz/Black  
 L-XXXL

Harsh conditions call for durable solutions. This women's winter jacket is the perfect combination of tailored design and rugged functionality. Classic Blaklader durability for hard working women.

**CERTIFICATION:** ANSI/ISEA 107-2015 Type R, Class 2.



## 4777

### WOMEN'S HI-VIS SOFTSHELL

**2513** 92% polyester, 8% elastane, 3-layer softshell, waterproof, windproof, breathable, stretch, 8 oz  
**3399** Yellow Hi-viz/Black  
 L-XXXL

This hi-vis softshell was designed and built for women. A lightweight, breathable solution that will not hinder movement, this jacket is an ideal addition to your wardrobe. This jacket features water-resistant material, functional pocket design and a tailored cut for better fit and comfort on the job site.

**CERTIFICATION:** ANSI/ISEA 107-2015 Type R, Class 2.



## 7160

### WOMEN'S HI-VIS WORK PANTS

**1860** 65% polyester/35% cotton, 9 oz  
**8933** Navy blue/Yellow Hi-viz  
 2R-14R, 6L-20L, 2S-20S

A truly functional Hi-Vis work pant built for women who work. This ultra-durable pant is designed to handle the toughest jobs and keep ongoing. Featuring bellowed pockets, CORDURA reinforced Kneepad pockets, and triple stitching, it's unlike any other Hi-Vis pant on the market today.

**CERTIFICATION:** ANSI/ISEA 107-2020 Class E, NOT FR - Class 2 Type R NOT FR when combined with performance class 2- or 3-uppers. CSA Z96-15, class 2 when combined with vest, class 3 when combined with 2 or 3 uppers.



## 3497

### WOMEN'S HI-VIS LONG SLEEVE T-SHIRT

**1013** 100% polyester, birds eye knit, wicking, anti-odor treated, UV-protection, 5oz  
**5300** Orange  
 L-XXXL  
**3300** Yellow  
 XXL

Stay cool in this hi-vis long sleeve T-shirt. Say goodbye to those oversized unisex T-shirts. We built a T-shirt for women with a tailored cut for a more comfortable, purposeful fit. For additional functionality and safety, we incorporated segmented reflective tape for a class 3 certification.

**CERTIFICATION:** ANSI/ISEA 107-2015 Type R, Class 3.



## 3499

### WOMEN'S HI-VIS T-SHIRT

**1013** 100% polyester, birds eye knit, wicking, anti-odor treated, UV-protection, 5oz  
**3300** Yellow, **5300** Orange  
 L-XXXL  
**3300** Yellow, **5300** Orange  
 L-XXXL

Stay cool in this hi-vis T-shirt. Say goodbye to those oversized unisex T-shirts. We built a T-shirt for women and we incorporated reflective tape for a class 3 certification along with a tailored cut for a more comfortable, purposeful fit.

**CERTIFICATION:** ANSI/ISEA 107-2015 Type R, Class 2.



## 3137

### US WOMEN'S HI-VIS VEST

**1831** 85% polyester, 15% cotton, ripstop, 7 oz  
**3399** Yellow Hi-viz/Black  
 S-XXXL

A high-quality safety vest designed and built for women. We took our most popular surveyor's vest and tailored it for hard-working women. With more pockets than you can count, you'll never lose a tool again with this hi-vis surveyor's vest. Plus, highly reflective stripes for visibility and black panels where your hands hang to keep your workwear looking clean.

**CERTIFICATION:** ANSI/ISEA 107-2015 Type R, Class 2.







## 3455

### WOMEN'S 3D HOODIE

**1158** 100% cotton, french terry, 320 g/m<sup>2</sup>

**4109** Autumn Green, **5909** Burned Red, **9900** Black  
XS-XXL

Everyone loves a good Hoodie. Well, this one raises the bar. This bold new look is crafted in 100% cotton material and cut in a feminine fit. It also boasts an all-new 3D "Blåkläder" logo to help you stand out in the crowd. This hoodie is seriously cozy, but don't let it fool you, just like any Blåkläder item, it's ready for a hard day's work. \*NOTE THESE ARE ALL EU SIZING RELABELED FOR US SIZING (I.E. STICKERS SHOW US MEDIUM AND TAG INSIDE THE GARMENT SHOWS EU LARGE)



## 4741

### WOMEN'S KNITTED FLEECE JACKET

**2536** 97% polyester, 3% elastane, Jacquard knit, one side brushed, stretch, 290 g/m<sup>2</sup>

**5999** Burned Red/Black, **9799** Dark grey/Black  
L-XXL

This hooded knit jacket is built with a stylish design and unbeatable comfortable fleece quality. This two-way zipper front jacket has a new, unique material that can best be described as a three-dimensional fleece. The brushed material gives the jacket its appearance with stretchy and supple comfort and warmth when needed. The softshell reinforcement provides added durability and branding space, while leaving room for ventilation. The 4741 is the ultimate jacket for work or relaxation. \*NOTE THESE ARE ALL EU SIZING RELABELED FOR US SIZING (I.E. STICKERS SHOW US MEDIUM AND TAG INSIDE THE GARMENT SHOWS EU LARGE)



## 4772

### WOMEN'S AIR MESH JACKET

**1977** 100% polyester, oxford, laminated, wind- and waterproof, breathable, 6 oz

**9900** Black  
L-XXXL

This Air Mesh-lined jacket is built to keep up with the hardest working women out there. This tailored jacket will keep you comfortable in cooler temperatures without adding bulk. The subtly bold design boasts plenty of pockets and functionality along with flashes of hi-vis accents. The durable waterproof material is bonded by the toughest seams in the industry to give you confidence on and off the job site.



## 3444

### WOMEN'S 3D T-SHIRT

**1042** 100% cotton, single jersey, 4 oz

**4109** Autumn Green, **5909** Burned Red, **9900** Black  
XS-XXL

Take your shirt game to the next level with the 3D "Blåkläder" T-shirt! This bold new look is crafted in 100% cotton material and cut in a feminine fit. This is already a Blåkläder classic and it's perfect for wearing both on and off the job site. \*NOTE THESE ARE ALL EU SIZING RELABELED FOR US SIZING (I.E. STICKERS SHOW US MEDIUM AND TAG INSIDE THE GARMENT SHOWS EU LARGE)



## 4976

### WOMEN'S KNITTED JACKET

**2117** 100% polyester, knitted, 11 oz

**9099** Grey melange/Black, **9799** Dark grey/Black  
L-XXXL

The coveted and revered women's knitted jacket is a must-have for any hard working woman. This jacket is made from a comfortable, soft material reinforced with soft-shell along the higher wear areas. It's perfect for on the job, or for a laid back weekend.



## 7153

### WOMEN'S SERVICE STRETCH PANTS

**1845** 65% polyester, 35% cotton, plain, 5 oz

**9900** Black  
2R-16R, 6L-16L, 4S-12S

Modern service trousers in a light but durable material with fast drying features - which makes the trousers ideal for work indoors, or outdoors in warm weather. The model has a narrower fit, elastic waist, and pre-curved knees for increased comfort. For optimal ability to move, the trousers have stretch panels in carefully selected places, such as the bottom, knees, and crotch. The trousers have a pen and knife pocket adapted for the right- and left-handed, a leg pocket with an inside pocket in mesh for the mobile phone, as well as the extension option at the leg hem.



**RIP  
STOP**

**7169**

WOMEN'S RIPSTOP PANT

**1330** 60% cotton, 40% polyester, ripstop 7 oz  
**2700** Stone, **9900** Black  
2R-16R, 6L-16L, 4S-12S

We took our top-selling ripstop pants and re-engineered them for women! The ripstop fabric is lightweight and comfortable with an unmatched durability of even the heaviest fabrics. Equipped with features like kneepad pockets and carpenter pockets on the leg makes these pants an essential tool for your workday. The gusseted crotch panel made from stretch material increases the flexibility and durability of the garment.



**7182**

WOMEN'S STRETCH CRAFTSMAN PANT

**1644** 93% polyamide, 7% elastane, Dobby, 4-way stretch, 295 g/m<sup>2</sup>  
**9900** Black  
2R-16R, 6L-16L, 4S-12S

The Stretch Craftsman Pant is the culmination of years of development and innovation. Designed for women, this pant offers 4-way stretch, CORDURA reinforcements, improved kneepad pockets, and detachable Utility pockets. This pant combines everything you could ever want in a pair of work pants.



**7101**

MATERNITY SERVICE PANTS WITH STRETCH

**1830** 55% pes / 45% wo  
**9900** Black  
XS-XXL

Scratch-free service pants from Blåkläder's revolutionary maternity workwear collection. Crafted from 2-way-stretch fabric, the pants have 4-way-stretch panels on the rear, crotch and knees. Magnetic buttons and concealed features make these highly reliable pants awesome to wear when working in environments with sensitive surfaces. Loops at the waist for a belt, so that the optional nail pocket can be added.

**CERTIFICATION:** EN 14404:2004+A1:2010 together with knee protection 4057.



CORDURA®-  
REINFORCED  
KNEEPOCKETS

**7990**

WOMEN'S CRAFTSMAN PANT

**1141** 55% cotton, 30% polyester, 15% polyamide, denim coated, CORDURA® Denim stretch, 10 oz  
**8999** Navy blue/Black  
C32-C50, D19-D25

Durable craftsman's trousers in women's fit made of CORDURA® denim stretch fabric and stretch panels at the crotch for optimal range of motion. For optimal fit the trouser has an elasticized waistband and tapered legs. Bottom-loading knee pocket in CORDURA® stretch fabric suitable for maximum comfort even when kneeling.

**CERTIFICATION:** EN 14404:2004+A1:2010 together with knee protection 4027 and 4057.



**7136**

WOMEN'S FR PANT WITH UTILITY POCKETS

**1550** 88% cotton, 12% polyamide, twill flame resistant 10 oz, Arc Rating 11,0 cal/cm<sup>2</sup>  
**8900** Navy blue  
2R-16R, 6L-16L, 4S-12S

The 7136 Women's FR Pants are built for hard work and designed specifically for women. This pant features reinforced kneepad pockets, side pockets, and external utility pockets so you can get more done and be more comfortable while out in the field.

**CERTIFICATION:** ASTM F1506-2020, CSA Z462-2018, ATPV Rating: 11 cal/cm<sup>2</sup>, CAT 2, NFPA 2112-2018.



**7164**

WOMEN'S VISIBILITY RIPSTOP PANT

**1330** 60% cotton, 40% polyester, ripstop 7 oz  
**9933** Black/Yellow Hi-viz  
2R-16R, 6L-16L, 4S-12S

A women's pant built for hard and agile work environments. This Ripstop pant is a game changer in the world of women's workwear. The mainly black fabric is lightweight and comfortable, with the unmatched durability of even the heaviest of fabrics letting you take every step on the job site with confidence knowing you are protected and seen.

**CERTIFICATION:** CSA Z96-15, class 2 when combined with vest, class 3 when combined with 2 or 3 uppers.





# 10

## BASE LAYER

THE 3-LAYER PRINCIPLE:

### ADAPT YOUR CLOTHING TO YOUR LEVEL OF EXERTION

When working hard it's important to keep warm and dry. The 3-layer principle means regulating your body temperature by adding or removing garments as the weather or work dictates.

#### TRANSPORT - LAYER 1

This layer wicks away moisture from the skin.

An undergarment of wool or channel-stitched synthetic material absorbs moisture and wicks it away. Wool also regulates body temperature well. In cold weather it warms, and when the body heats up it cools. That means it is perfect to use even in clothing for warm environments.

Wool is famed for its self-cleaning properties.

The wool's natural creatine works like a natural deodorant, keeping your garment fresher for longer.

#### INSULATE - LAYER 2

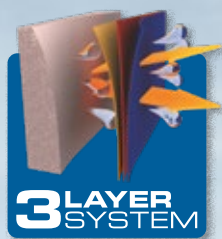
The intermediate layer insulates while wicking the moisture further away. As the temperature drops, the intermediate layer insulates against cold and lets you maintain your body heat. If you get hot and sweaty, regulate your temperature by lightening your intermediate layer. Put on a flannel shirt, a fleece garment, or an artificial fiber undergarment.

Our fleece garments combine style and function. Fleece warms when it's cold. It's also easy to wash, dries quickly and wicks away moisture from the body.

#### PROTECT - LAYER 3

This is the shield that protects you from cold, rain and wind. The breathable function releases moisture from inside so it can evaporate on the outside. The material is lightweight, easy to care for, has taped seams and an especially durable surface layer.

Real outerwear for hard work should have: Hidden cuffs at the end of sleeves and legs/Snow locks over zips/roomy, easy-access outer pockets/Warming fleece lining in front pockets/Drawstring for adjustable waist/Removable lining/Zip all the way up the collar.



## WARM

°F +25  
-20

°C -5  
-30



# 4897

### WARM BASE LAYER - TOP

**1732** 100% Merino wool, 6 oz

**9699** Grey/Black

XS-5XL

This warming base layer keeps the body warm and dry during cold weather. Warming zones located on shoulders, arms, back, behind and sides where you freeze the most. The base layer is made of 100% merino wool that provides superior insulation and humidity transportation qualities to keep you warm and dry. Recommended temperature 25°F to -20°F. Don't freeze while working, keep warm and dry in cold environment.

## XWARM

°F -5  
-30

°C -20  
-35



# 4894

### XWARM BASE LAYER - TOP

**1706** 70% Merino wool, 30% polypropylene, terry knitted, wicking, moisture management, 8 oz

**9900** Black

XS-5XL

This multi-functional clothing has everything one could ask of a base layer. XWARM regulate your temperature while keeping you warm and dry even in extreme cold. The material consists of an inner layer of channel knitted polypropylene which transport humidity away from the body and to the outer layer, where it is absorbed by the merino wool. Recommended temperature -30°F to -5°F. Keeping you warm and dry even during stationary work in the biting cold.

## WARM

°F +25  
-20

°C -5  
-30



# 1849

### WARM BASE LAYER - BOTTOM

**1732** 100% Merino wool, 6 oz

**9699** Grey/Black

XS-5XL

This warming base layer keeps the body warm and dry during cold weather. The base layer is made of 100% merino wool that provides superior insulation and humidity transportation qualities to keep you warm and dry. Recommended temperature 25°F to -20°F. Don't freeze while working, keep warm and dry in cold environment.

## XWARM

°F -5  
-30

°C -20  
-35



# 1894

### XWARM BASE LAYER - BOTTOM

**1706** 70% Merino wool, 30% polypropylene, terry knitted, wicking, moisture management, 8 oz

**9900** Black

XS-5XL

This multi-functional clothing has everything one could ask of a base layer. XWARM regulate your temperature while keeping you warm and dry even in extreme cold. The material consists of an inner layer of channel knitted polypropylene which transport humidity away from the body and to the outer layer, where it is absorbed by the merino wool. Recommended temperature -20°F to -5°F. Keeping you warm and dry even during stationary work in the biting cold.



# 11

## ACCESSORIES





## 2155

### ZIPPER PULL

**3300** Yellow, **4200** Green, **5500** Red highviz, **8000** Ocean Blue, **8500** Cornflower blue, **9400** Grey, **9700** Dark Grey, **9900** Black

One size

Replaceable zip pullers available in several different colors, enabling you to brand your workwear and your company.

## 4034

### BELT

**3300** Yellow, **4200** Green, **5300** Orange, **5500** Red highviz, **5600** Red, **8000** Ocean Blue, **8500** Cornflower blue, **9400** Grey, **9700** Dark Grey, **9900** Black

One size

Adjustable belt with metal buckle. Available in several different colors, enabling you to brand your workwear and your company.

# SMALL DETAILS BIG DIFFERENCE

Building and representing a strong brand is all about the details. We don't skip them and neither should you. Show your customers you care with a unified look and feel throughout your team. Whether it's a belt, a zipper pull, or custom printing, we've got your back.



# FORM-FITTING KNEE PADS

Knee injuries are all too common on the construction site. Most injuries are caused by poor ergonomics and inadequate protection during strenuous or dangerous tasks. Years of abuse lead to joint replacements, surgeries and time lost. Take care of your body with our built in kneepad system. Work smarter, so you can live life longer.





## 4057

### FOAM KNEEPADS

**1202** Polyeten

**9900** Black

One size

The next generation of Blaklader kneepads starts here. A lightweight and supple kneepad if you need flexible protection when you occasionally work on your knees. The pad forms to the shape of your knee and is suitable for working on flat surfaces. This is a standard foam kneepad built to fit into ANY of our pants that are equipped with a kneepad pocket as well as the limited edition kneepad sleeves.



## 4048

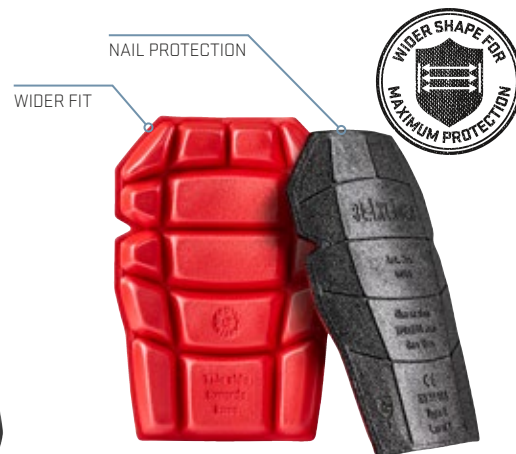
### REINFORCED KNEEPAD

**1203** Polyethene

**9956** Black/Red

One size

The next generation of Blaklader kneepads is changing the face of workwear. Hard work doesn't have to leave you in pain. The strong front side provides effective protection against sharp objects. The pad is soft on the inside so that it fits comfortably in order to ensure your knees are in the right position. These 4048 kneepads are designed to work with our top-load knee pad pocket to easily upgrade the 1699 or the 1691 work pants as well as the limited edition 4067 kneepad sleeves.



## 4058

### WIDE REINFORCED KNEEPADS

**1203** Polyethene

**9956** Black/Red

One size

A wider version of the 4048, these professional kneepads are made with EVA material, specifically designed for professional craftsmen working long hours on their knees. The strong front side provides effective protection against sharp objects. The pad is soft on the inside so that it fits comfortably in order to ensure your knees are in the right position. The 4058 kneepads are designed to fit with any of our pants equipped with a kneepad pocket as well as the limited edition 4067 kneepad sleeves.



## 4032

### KNEEPAD

**1207** 100% Synthetic rubber

**9900** Black

One size

A solid knee pad suitable for those who work laying floors or tiling. The pad is comfortable and flexible, made of 25 mm gel material with an extra wide fit which increases both comfort and provides effective protection when you are kneeling for long hours. The pad is soft on the inside for extra comfort and easily fits to the shape of your trousers.

KNEE PADS ARE  
SOLD SEPARATELY



## 4067

### KNEEPAD SLEEVES

**1933** 100% polyester, CORDURA® Stretch 320g/m²

**9900** Black

XS/S, M/L, XL/XXL, XXL/3XL

A summer kneepad solution that is worthy of the Blaklader name. These sleeves comfortably hold a 4048, 4057 or 4058 kneepad for those days when you just need to wear shorts. The CORDURA® stretch kneepad pocket is flexible and comfortable with airy mesh on the back for extra ventilation. But don't worry, it still boasts the same durability you have come to know and love. Choose from 3 different sizes and adjust the top strap to dial in that perfect fit. - Foam kneepads are NOT included





## 2007

### HI-VIS REFLECTIVE BEANIE

**4001** 100% acrylic

**3300** Yellow

One size

Hi-vis beanie with knitted reflex lines. No bells and whistles. This hat keeps it simple, functional and you visible on the jobsite.

**CERTIFICATION:** Hi-vis certification not applicable.

REFLECTIVE SEAMS



## 2028

### REFLECTIVE BEANIE

**2802** 97% Acrylic, 3% polyester, 2x2 rib flat Reflective, 10oz

**9291** Grey melange

One size

We don't mess around with silly patterns or bobbles. The 2028 reflective beanie is simple and functional with reflective material woven through the wool to help keep you safe in all conditions.



## 2009

### RAIN HAT

**2003** 100% polyester, polyurethane coated, wind and waterproof, 7 oz

**3300** Yellow

M/L, XL/XXL

Protect your luscious locks with a rain hat from Blaklader. This Hi-Vis, polyester PU coated hat brings complete protection from wind, rain or snow. Stays secure with adjustable cord under your chin.



## 2062

### HARDWARE HAT

**8900** Navy blue, **9400** Grey, **9900** Black

One size

Winter Hardware hats are fleece-lined skull caps made to fight the most frigid winter days.



## 2029

### HARDWARE WOOL BEANIE

**1734** 100% Merino wool, single- jersey, 6oz

**9800** Dark grey

One size

We scoured the globe for the finest and softest wool of any sheep. Made from Merino wool, the 2029 hardware beanie is breathable and static resistant for top of the line comfort.



## 2021

### KNIT HAT

**9900** Black

One size

Blaklader's comfortable knitted hat, to keep you warm and working!



## 2054

### BASEBALL CAP

**2870** 95% polyester, 5% wool, twill 2/1, 9oz  
**9000** Grey melange

One size

A baseball cap should be more than a fashion statement. The 2054 not only looks great in grey Mélange, but outperforms your old worn-out cap with its wool material. Try this one on for size.



## 2058

### FLEX FIT BASEBALL CAP

**1372** 98% Cotton 2% Spandex  
**9900** Black

S/M, L/XL

A simple classic flex fit baseball cap. On or off the job site, this hat will let everyone know where you stand.



## 2059

### BASIC CAP

**1350** 100% cotton,  
**9900** Black

One size

Show your team spirit somewhere else. This black baseball cap belongs on the jobsite. Adjustable strap on the back of the hat with custom Blåkläder embroidery on the back.



## 2075

### TRUCKER CAP

**3709** Honey Gold, **5909** Burned Red, **8209** Blue limited, **8600** Dark navy blue, **9900** Black

One size

Trucker cap in baseball model that is color-matched with Blåkläder's t-shirts and hoodies with 3D print. The cap is one size but adjustable with a snapback.



## 4020

### HAMMER HOLDER

**9900** Black

One size

Practical hammer loop complete with a fabric loop and durable metal hammer holder.



## 4033

### WEB BELT - WITH BLÅKLÄDER PRINT

**9900** Black

One size

This adjustable length, textile belt will have you representing Blåkläder wherever you go. The metal buckle comes in antique silver with the Blåkläder logo engraved in the front. This belt also includes Blåkläder print around the band and measures roughly 49 inches long, 1.5 inches wide.



## 4013

### STRETCH WEB BELT - WITH EMBROIDERED LOGO

**9900** Black

One size

The heavy-duty webbed belt has a logo embroidered along the webbing and a durable bronze buckle. When your workpants are loaded down with tools, you'll need something like this to keep them up.



## 4014

### STRETCH WEB BELT

**9900** Black

One size

For a simple and professional look, the silver belt buckle has a small Blåkläder logo on a polished silver buckle. It's the perfect choice for tradesmen who spend a lot of time in front of clients.



# 12

# SIZE OPTIONS

## US MEN'S SIZES

ALL MEASUREMENTS ARE IN INCHES

### TOPS

Size	XS	S	M	L	XL	XXL	3XL	4XL	5XL	6XL
A. Chest	33-34½	35-36	37½-39	40-41	42½-44	45-46	47-48½	49-50	52-53½	54-55
B. Waist	28½-30	30½-31½	33-34½	35-36	38-40	41-42	44-46	47-48	50-52½	53-55

### SIZE RANGE MEN'S PANTS

Inseam	28	30	32	34	36
Waist	30-32	30-50	30-50	30-46	34-40

Note that all models are not available in all sizes.

### HEADWEAR

Size	One Size
E: Head Circumference	20½ - 25¼

## US WOMEN'S SIZES

ALL MEASUREMENTS ARE IN INCHES

### TOPS & PANTS

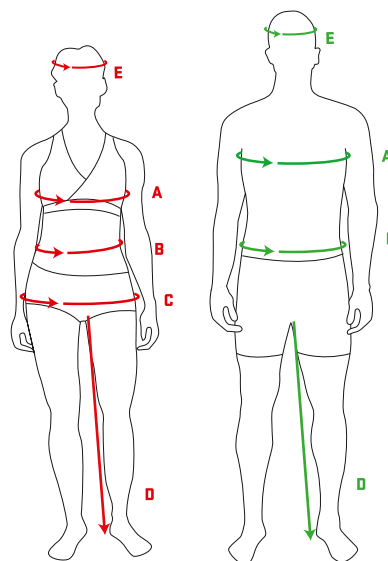
Size	XS	S		M		L	XL		XXL		3XL
Swedish size	C32	C34	C36	C38	C40	C42	C44	C46	C48	C50	C52
US/CA size	0	2	4	6	8	10	12	14	16	18	20
A. Chest	30	31½	33	34½	36	37½	39	40½	43	45½	48
B. Waist	25½	27	28	29	30½	32	33½	35	37	39½	42
C. Seat*	34	35½	36½	38	39	40½	42	43½	45½	47½	49½

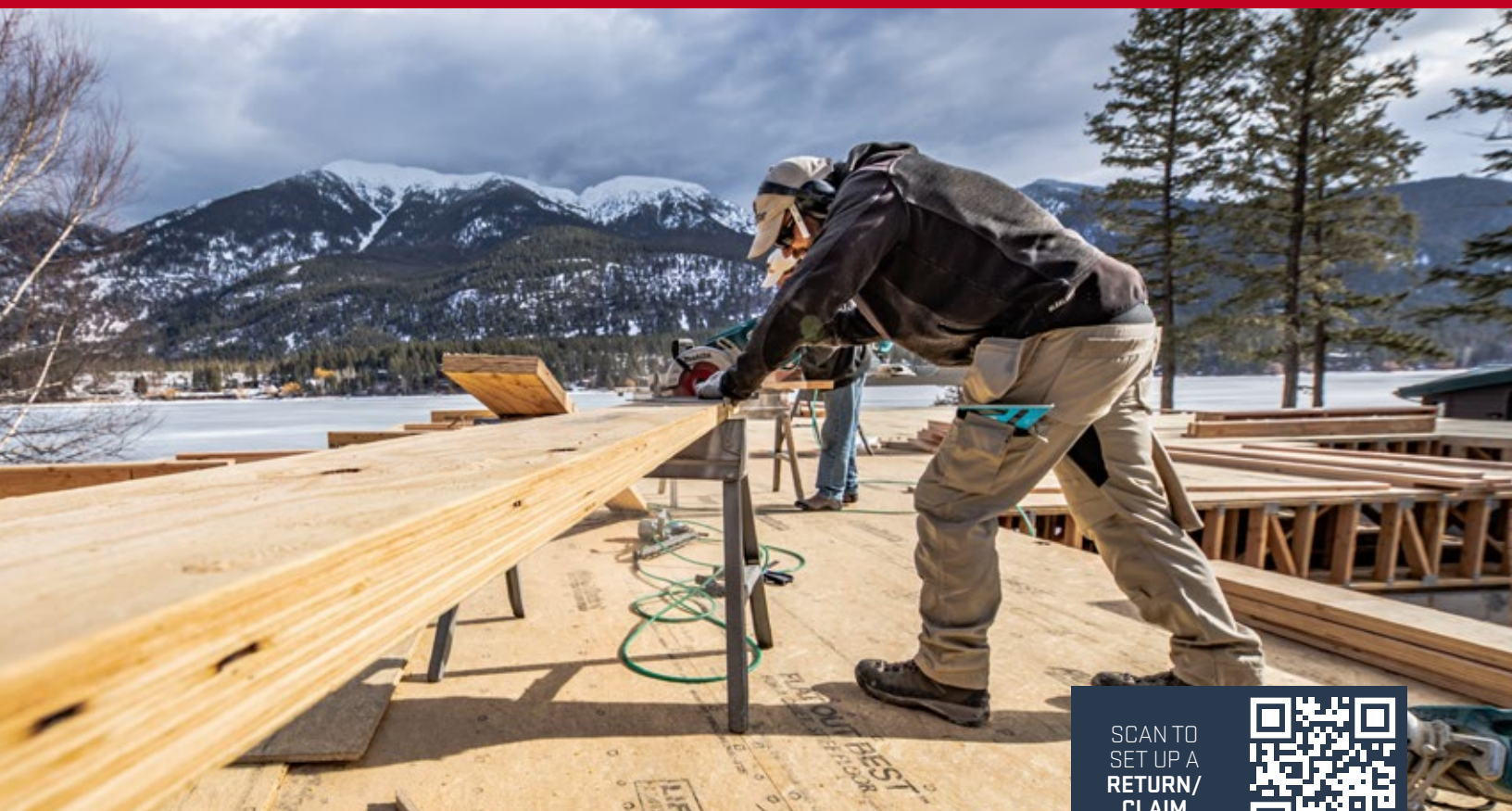
\*For pants: choose your size according to your widest point at seat.

Size	Short	Regular	Long
D: Inside leg	29	31	33

### HEADWEAR

Size	One Size
E: Head Circumference	20½ - 25¼





SCAN TO  
SET UP A  
RETURN/  
CLAIM



## WARRANTY

Blaklader offers a warranty on all the seams in our products for the life of the garment. All garments have an expected service life, we would consider a garment past its useful life if it has seen excessive wear in major areas such as tears and holes. This warranty does not cover damage caused by normal wear and tear, obvious abuse, misuse, or neglect. Other hardware like zippers or buttons will not fall under our warranty. Blaklader will also cover premature failure of any of our products caused by a defect in the materials and workmanship. Blaklader has the right to reimburse for minor repairs or replace any defective merchandise at Blaklader's option and expense. Any product that is no longer in production will be replaced with a comparable Blaklader product. Blaklader assumes no liability for garments that have had alterations, embroidery, or other ornamentation added to the garment.

## CLAIMS

Claims for shipments on merchandise damaged or lost in transit are to be filed against the carrier by Blaklader.

Our shipments are carefully audited for accuracy. However, should you find it necessary to request a claim, visit our returns page through the QR code below. Blaklader will deny any claims not filed within 30 days of the ship date. Credits are valid for 365 days from the date of the issue.

## RETURNS

New, unused garments may be returned within 30 days for a refund or exchange as long as the tags are still attached. All submissions are subject to inspection and approval by our return department. Returns will not be accepted without a Return Authorization Number (RMA). To obtain that number please visit our return page at [blaklader.com/en/returns](https://blaklader.com/en/returns) or use the QR code below. Please be prepared to provide style numbers, sizes, reason for return, quantity, purchase order number, or order confirmation number. Return Authorization numbers are valid for 30 days on the items specified. A restocking fee of 25% may apply under certain circumstances. Cartons containing returns may not weigh more than 40 lbs.





[www.blaklader.com](http://www.blaklader.com)

**Blaklader USA**

Blaklader LLC Main Office  
6311 Porter Road, Suite 1, Sarasota, FL 34240  
Tel: (800) 948 6452  
email: [info.usa@blaklader.com](mailto:info.usa@blaklader.com)

**Blaklader Canada**

201 Millway Ave, Unit 22  
Concord, ON L4K 5K8  
Tel: 647-946-4243  
email: [info.canada@blaklader.com](mailto:info.canada@blaklader.com)

FOLLOW US ON SOCIAL MEDIA



@blakladerna



BlakladerUS  
BlakladerCA



BlakladerNA



BlakladerNA



VISIT OUR  
WEBSITE



VISIT OUR  
WEBSITE

